



**WARDROBE & BATH SPECIALTIES
2021**



ABOUT US

For over 30 years, Wardrobe & Bath Specialties has innovated, designed and manufactured the highest quality shower and wardrobe products in the industry. Our products are built to last and designed to be installer friendly. We are dedicated to providing our customers with an exceptional product at a competitive price. With our knowledgeable customer service team and staff, we are able to service customers throughout California, Nevada, Arizona and Hawaii. We own and operate our own fleet of trucks and promise to make an efficient, safe delivery of your product in the shortest turn-around time possible. Our skilled customer service team can assist you with multiple configuration options, supply custom glass patterns & finishes, or help you choose from our extensive inventory of standard products. Our commitment is to provide each and every customer with a great product and service they can trust.



OUR PRODUCTS

SHOWER DOORS

- WBS shower doors combine quality, style and functionality
- Installer-Friendly
- All glass can be ordered with EnduroShield™ Protection, available upon request
- Several different models of shower and bath enclosures, glass sizes and finish options available

WARDROBE DOORS

- WBS wardrobe doors are made of the highest quality materials
- Our innovative design is both stylish and built to last using the thickest aluminum extrusions in the industry, precision rollers, mohair interior tracks, and a variety of finish options



HEAVY GLASS & HARDWARE

- 3/8" and 1/2" glass in a wide range of sizes
- Heavy Duty & Standard Hinges
- Compression Clips, Notched and Notchless
- Towel Bars
- Pull Handles
- Headers & U-Channels
- Knobs and other accessories



OUR MISSION

“TO PROVIDE OUR CUSTOMERS WITH QUALITY PRODUCTS, EXCEPTIONAL CUSTOMER SERVICE AND VALUE THEY CAN TRUST.”

-WARDROBE & BATH SPECIALTIES

WHEN YOU PLACE YOUR ORDER

ORDER CONFIRMATIONS

- We will not let you purchase anything until we ensure your order is right. Our trained customer service representatives can give you recommendations on the glass size you need to properly fit the opening. Our customer service teams are ready to inform you of our extensive inventory and provide you with standard glass sizes versus custom sizes, saving you money.
- Once your order is placed, it goes through a secondary review by our experienced warehouse team to ensure that the unit is appropriate for the application, the glass heights and widths are correct, and that our warehouse is fully equipped to handle your order in terms of our inventory. We use customer drawings and measurements throughout the fabrication process to ensure accuracy.
- Our highly skilled customer service team carries with them years of experience in the industry, with many having been with us for 10 years or more. We also have multiple bilingual team members to better serve our Spanish speaking customers.

WARDROBE & BATH SPECIALTIES
PROMISES TO MAINTAIN QUALITY CONTROL
AT EVERY STEP OF OUR PROCESS

WHEN WE FILL YOUR ORDER

GLASS INSPECTIONS

- Every piece of glass that comes through the WBS warehouse is thoroughly inspected for chips, scratches, knicks or flaws of any kind using an illuminated back-light rack system. If the glass has any flaw, it is immediately taken out of production and a replacement is ordered. If your glass is taken out of distribution, one of our customer service representatives will contact you with a new estimated delivery date.
- After inspection, all custom and 3/8" glass is carefully bagged and protective corners are added.

METAL EXTRUSIONS

- WBS manufacturers metal extrusions that are specifically designed for an easy and quick installation.

FINAL INSPECTIONS

- Every order has a cut sheet that is double checked by the fabricator to ensure your unit is ready to install without issue.
- In addition to our hands-on inspection, we use technologically advanced 360° degree cameras to continually ensure extrusions maintain the required specs and that everything happening in the warehouse upholds our high quality standards.
- Every unit is checked again by the truck loader and confirmed against your order before leaving our warehouse.

TRUCK DELIVERY ASSURANCE

- WBS owns and operates our own fleet of delivery trucks designed to safely and efficiently transport glass and wardrobe doors. Our team-drivers are on route delivering to our customers in California, Nevada and Arizona typically within 1-3 business days. We can confirm the location of our drivers at all times using GPS systems. However, if anything keeps us from delivering your product as scheduled, our dedicated customer service team is guaranteed to make courtesy calls to keep you informed on the estimated delivery time of your product.



PROPER CLEANING

- Daily or occasional use of a shower enclosure will cause residue build-up on both the glass and aluminum. To maintain the shower enclosure's shine and clarity, we recommend that all glass and aluminum be wiped down after each use. The best tools to use are a squeegee and a microfiber cloth. After the glass is wiped down, it's best to wipe the aluminum with a towel and touch-up the glass. Occasionally, we also recommend you clean the glass with either an alcohol or ammonia based glass cleaner. These cleaners should also be safe for use on the aluminum, but always refer to the label for proper usage.

ABRASIVE CLEANER

- We do not recommend using abrasive cleaners that can scratch or cause defects to either the glass or the aluminum. We only recommend using cleaners that are intended to be used on glass or aluminum. That is why we created WBS professional glass cleaner specially formulated to care for your glass.

WBS PROFESSIONAL GLASS CLEANER

- WBS Glass Cleaner is custom-formulated to professionally clean and polish your shower doors, mirrored wardrobe doors, windows and windshields without leaving any film behind.
- For institutional, commercial and industrial use
- Contains no ozone depleting chemicals



WBS GLASS CLEANER

- SHOWER DOORS
- MIRRORED WARDROBE DOORS
- WINDOWS
- MIRRORS
- WINDSHIELDS

ENDUROSHIELD™

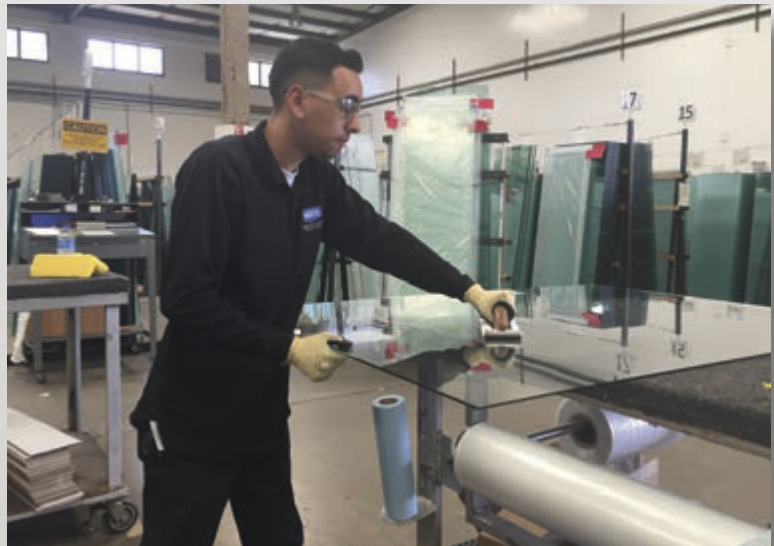
- WBS offers EnduroShield™, a professional strength glass coating applied by WBS or available in an easy to use DIY (do-it-yourself) kit. EnduroShield™ is a revolutionary invisible treatment that repels water, soap scum, grime and dirt on glass, tiles and stainless steel which will reduce your cleaning time by up to 90%. Water will bead on the surface demonstrating its repellent nature. When professionally applied by WBS, EnduroShield™ provides a 10-year performance warranty. When applied using the DIY kit, EnduroShield™ provides a 3-year performance warranty. EnduroShield™ is independently tested and certified for durability. The largest glass fabricators and manufacturers around the world rely on EnduroShield™ as the industry-leading solution. Ask our customer service representatives for more information on how to get EnduroShield™ protection on your glass.



- REVOLUTIONARY SOLUTION FOR GLASS
- REPELS WATER, SOAP SCUM & GRIME
- REDUCES CLEANING TIME BY UP TO 90%

✓ 10 YEAR WARRANTY

WHEN PROFESSIONALLY
APPLIED BY WBS



✓ 3 YEAR WARRANTY

WHEN APPLIED USING THE DIY KIT

WBS IS YOUR SIKA® DISTRIBUTOR

- WBS makes an effort to provide our customers with the best quality products available in the industry, giving our customers the tools they need to properly install a high-quality finished product. With all of the products we provide, it only makes sense to include the leading brand name in glazing sealants, Sika®.
- WBS is the only certified Sika® distributor in Northern California and we carry the Sika® line of residential and commercial glazing products in a variety of colors.

WHY USE SIKA®?

- Since 1937, Sika® Corporation has been providing product solutions for the most demanding requirements concerning sealing and bonding within the glass industry. Today, the Sika® brand of products is held in the highest regard by the professional glazier.
- Sika® has been legendary in the development and delivery of Sikaflex® polyurethane systems that function with the highest degree of reliability available.
- Now, WBS is proud to offer a full line of the top Sika® products designed for the glass industry like Sikaflex® polyurethane, Sikasil® silicones, and SikaHyflex® hybrid flat glass sealant.
- All Sika® products are Made in the USA.

NEW SIKAFLEX® MIRROR GRIP

- WBS now carries Sikaflex® Mirror Grip, a one-component, moisture-cure, instant grab, polyurethane adhesive designed for use in bonding mirrors. This product is ideal for instantly securing vertical mirrors in place.



- Sikaflex® Mirror Grip Features:
- Low odor
- High durability
- Non-corrosive
- Waterproof after cure
- Flexible, to allow movement between substrates

Picture of Sikaflex® Mirror Grip on left and Gunther Ultra Bond® on right.
Slip down test 4 minutes after installation.

WHAT SIKA® PRODUCT TO USE

APPLICATIONS	RECOMMENDED SIKA PRODUCT	PACKAGING	DESCRIPTION & SIMILAR COMPETING PRODUCTS
Shower & Tub Enclosures	Sikasil® N Plus US	295 ml. ctg/24 per case	Neutral Cure Silicone Fungicide Added Most like Dow 799, 739, 832, GE SCS 1800, RTV120, Tremco 600, TremPro 645
	Sikasil® GP	295 ml. ctg/24 per case	Acetoxy Cure Silicone Fungicide Added Most like CRL 33S, Dow 999A, GE SCS 1200 & 1000, RTV100, Tremsil 200, Pecora 860
Commercial Store Front & Entrances	Sikasil® WS-295	295 ml. ctg/600 ml. foil	High Performing Neutral Cure Silicone Most like Dow 795, 995, 756, SMS, GE Silpruf 2000, 9000NB, Tremco Spectrum 2&3, Pecora 895
	Sikaflex® 201 T	300 ml. ctg	Textured Polyurethane Most like Vulkem 116, CRL M66 Textured
	Sikaflex® 201 US	300 ml. ctg/600 ml. foil	Smooth Polyurethane Most like Tremco Dymonic, Sonneborn NP1, CRL M64
Residential & Commercial Windows	NEW Sikaflex® Mirror Grip	300 ml. ctg	Advanced Polyurethane Most like CRL Palmer Qwikset, Mirror-Mastic
	Sikaflex® 219 LM	300 ml. ctg/600 ml. foil	Smooth, Low-Modulus Polyurethane Most like Vulkem 921
	Sikaflex® 201 T	300 ml. ctg	Textured Polyurethane Most like Vulkem 116, CRL M66 Textured
	Sikaflex® 201 US	300 ml. ctg/24 per case	Neutral Cure Silicone Fungicide Added Most like Dow 799, 739, 832, GE SCS 1800, RTV120, Tremco 600, TremPro 645
Glass Edge Sealing	Sikasil® N Plus US	295 ml. ctg/24 per case	Neutral Cure Silicone Fungicide Added Most like Dow 799, 739, 832, GE SCS 1800, RTV120, Tremco 600, TremPro 645
	Sikasil® GP	295 ml. ctg/24 per case	Acetoxy Cure Silicone Fungicide Added Most like CRL 33S, Dow 999A, GE SCS 1200 & 1000, RTV100, Tremsil 200, Pecora 860
General Purpose Glazing	Sikasil® GP	295 ml. ctg/24 per case	Acetoxy Cure Silicone Fungicide Added Most like CRL 33S, Dow 999A, GE SCS 1200 & 1000, RTV100, Tremsil 200, Pecora 860
General Purpose Glazing / Hybrid Flat Glass Sealant	Sikaflex® 510 AM50	300 ml. ctg/24 per case	One-Component, Low Modulus, Hybrid Flat Glass Sealant Meets ASTM C920, Class 50, UV Resistant, Paintable, Elongation: 700%, Skin time: 60 minutes Most like NONE



BUILDING TRUST



LIMITED FIVE YEAR WARRANTY

Wardrobe & Bath Specialties guarantees its product to be free of defects in material and workmanship for five years from the original date of purchase. This warranty extends to the original purchaser and the first consumer owner only.

If a product fails due to defects in material or workmanship during the warranty period, we will, at our option, repair it, replace it with the most nearly identical product which we sell at the time or refund the original purchase price. Wardrobe & Bath Specialties will not be liable for any labor charges or freight costs incurred in connection with repair or replacement of a product.

This warranty does not cover:

- Damage resulting from negligence, misuse, abuse or accident occurring after installation
- Mirror or glass breakage
- Damage resulting from foreign matter in the bottom track or on the back or edges of the product
- Damage due to use outside normal architectural requirements
- Defects resulting from any modification made by anyone other than the manufacturer

Wardrobe & Bath Specialties sole responsibility is as set forth above. In no event shall Wardrobe & Bath Specialties be liable for incidental or consequential damages. Some states do not allow the exclusion or limitation of incidental or consequential damages, so the above limitation or exclusion may not apply to you.

If it becomes necessary for you to request service under this warranty, please call or email Wardrobe & Bath Specialties and include a brief description of the problem, your name, address and contact number. We will determine whether the claim is within warranty and contact you with shipping instructions if appropriate.

Wardrobe & Bath Specialties
Phone: (800) 540-4085
Email: info@wardrobeandbath.com

We reserve the right to make changes and improvements in our products without incurring any obligation to similarly after products previously purchased.

This limited warranty is in lieu of all other warranties, expressed or implied, including the implied warranties of fitness and merchantability. There are not warranties which extend beyond the description on the face hereof. Some states do not allow limitations on how long an implied warranty lasts, so the above limitation may not apply to you. This warranty gives you specific legal rights and you may also have other rights which vary from state to state.

POLICY & TERMS

- All prospective customers must go through an application and approval procedure. After a prospective customer has been approved, they will be issued an account number, username and password so that they may begin purchasing products and access our website ordering system. To start the application process, please contact us.
- Wardrobe & Bath Specialties delivers our product via our own delivery trucks in the states of California, Nevada and Arizona. Our delivery trucks generally leave in the evening and make the majority of their deliveries during the late night hours. Our customers must furnish a key to their place of business or provide a secure place to leave our product, as most of our deliveries are made during non-business hours.
- We also ship our products via common carrier upon request or for customers outside our normal delivery areas. This is an additional charge and delivery schedules may vary depending on the shipping method.

WATER-TIGHT

- Our shower enclosures are designed to keep water inside the unit when properly installed and under normal shower conditions. With this stated, it is important to understand that our units are not water-tight or leak-proof. If there is excessive water use or water is sprayed directly at the unit, there is the possibility of leaking. These situations do not constitute normal shower conditions and should be avoided.

TOWEL BAR

- Any towel bar that is installed on one of our units, should never, under any circumstances be used as a grab bar. The towel bar should not be hung from or pulled on with excessive force. Doing so could result in glass breakage or serious injury.

EXCESSIVE FORCE

- The use of excessive force on the shower enclosure could cause glass breakage or serious injury. Our units are designed to open or slide easily with a limited amount of force.

GLASS TEXTURES

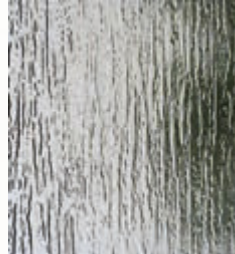
- WBS carries thousands of glass sizes and many glass textures in-stock. Below are the most common glass textures for our tub and shower enclosures and heavy glass units. However, WBS can always work with you to design a custom unit with even more glass textures available upon request.



Clear



Obscure



Rain



Narrow Reed



HARDWARE FINISHES

- WBS carries the most popular finishes used to complete the look of our tub and shower enclosures and heavy units. These options are standard for most units.



Polished Chrome



Brushed Nickel



Oil Rubbed Bronze



Matte Black



Polished Brass



Antique Brass



Polished Nickel



Satin Nickel

WBS TUB & SHOWER ENCLOSURE FEATURES

INVENTORY

- We carry thousands of glass sizes in stock including varying door sizes and panels
- Our shower and tub enclosures come in a variety of beautiful glass textures including clear, obscure, rain, narrow reed and now aquatex for some units
- Every unit is available in our most popular anodized finishes Polished Chrome, Brushed Nickel, and Oil Rubbed Bronze with even more colors available for some units
- WBS designs our units to be installer friendly

EXTRUSIONS

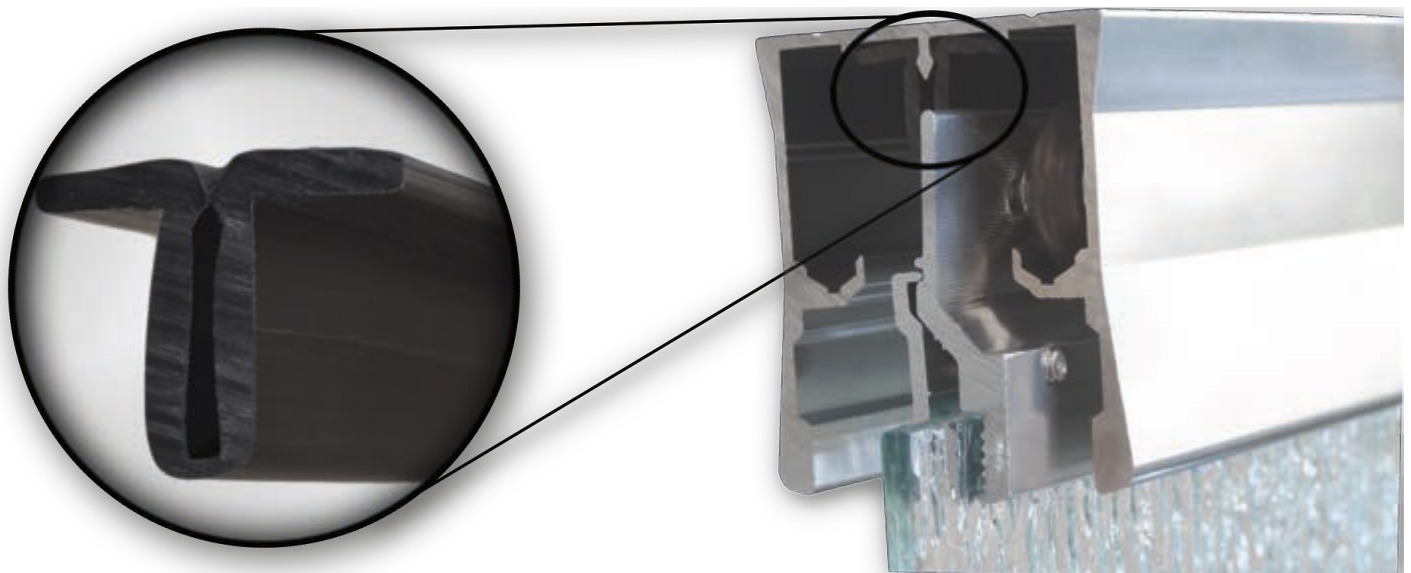
- All metal extrusions are polished or brushed on both the front & back side, giving every unit a quality, finished look that can be seen from any angle

INSTALLER TOOLS

- Every TE/SE unit contains
 - #32 High Speed Steel Drill Bit
 - Apex Square Drive Bit #1, #2
 - Porcelain Bit
- Every Pivot Door unit contains
 - #32 High Speed Steel Drill Bit
 - Apex Square Drive Bit #1, #2

ANTI-JUMP CHANNEL FOR SLIDING UNITS

- Designed to prevent your glass from coming off the track
- Available upon request on all TE/SE units



Anti-Jump Channel



TUB & SHOWER ENCLOSURES

TE-1000 FRAMELESS TUB ENCLOSURES



FEATURES & BENEFITS

- 3/16" standard thick tempered glass
- Pencil polished edges
- Double towel bar
- Handle mounted on glass
- Available in custom glass sizes and textures
- List prices provided are for standard 3/16" thick glass in our most popular finishes including Polished Chrome, Brushed Nickel, Oil Rubbed Bronze and Matte Black
- For custom sized units, or units requiring specialty or non-stock glass, please contact customer service for pricing
- Pricing & availability is based on glass being in stock

GLASS TEXTURES



3/16" Clear



3/16" Obscure

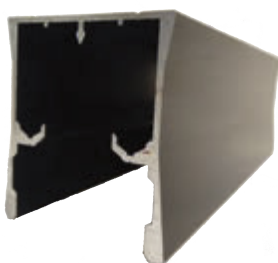


3/16" Rain



1/4" Narrow Reed

TE 1000 Header



TE 1000 Towel Bar



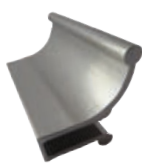
AVAILABLE COLORS



Polished Chrome



Oil Rubbed Bronze



Brushed Nickel

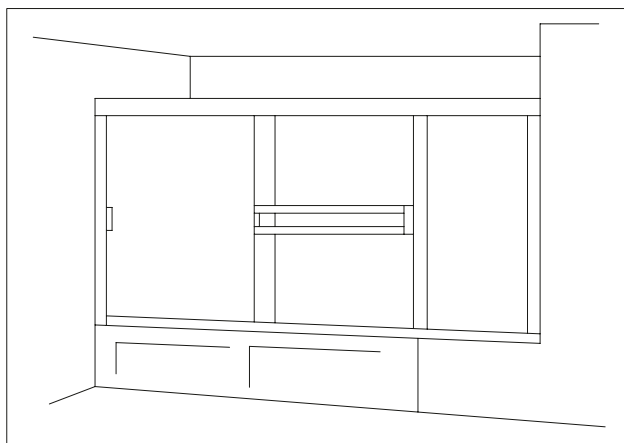


Matte Black

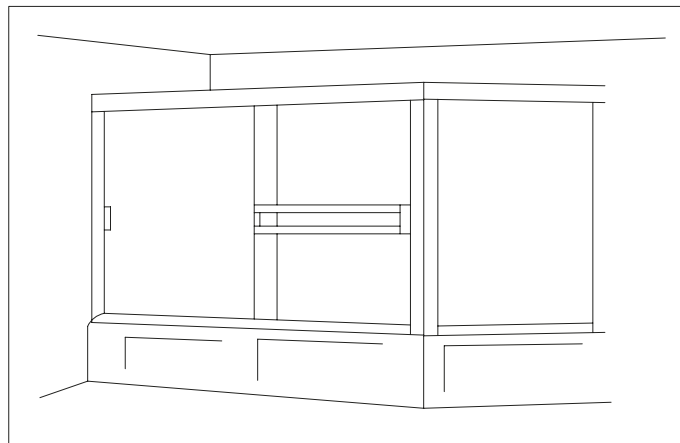
WIDTH & HEIGHT OPTIONS

<u>TE-1000</u>		<u>Chrome</u>	<u>Oil Rubbed Bronze</u>	<u>Brushed Nickel</u>	<u>Matte Black</u>
<u>Width x Height</u>		<u>List Price</u>	<u>List Price</u>	<u>List Price</u>	<u>List Price</u>
57 1/2"	x 54 3/4"	\$197	\$278	\$278	\$278
57 1/2"	x 55 1/2"	\$197	\$278	\$278	\$278
42"	x 56 3/4"	\$197	\$278	\$278	\$278
48"	x 56 3/4"	\$197	\$278	\$278	\$278
54"	x 56 3/4"	\$197	\$278	\$278	\$278
56"	x 56 3/4"	\$197	\$278	\$278	\$278
60"	x 56 3/4"	\$197	\$278	\$278	\$278
66"	x 56 3/4"	\$209	\$297	\$297	\$297
72"	x 56 3/4"	\$242	\$344	\$344	\$344
60"	x 57 3/4"	\$197	\$278	\$278	\$278
60"	x 58 3/4"	\$218	\$310	\$310	\$310
57 1/2"	x 60 1/4"	\$218	\$310	\$310	\$310
60"	x 60 1/4"	\$218	\$310	\$310	\$310
57 1/2"	x 62 3/4"	\$218	\$310	\$310	\$310
60"	x 62 3/4"	\$218	\$310	\$310	\$310

TE-1000A/A1/C FRAMELESS TUB ENCLOSURES WITH PANELS



TE 1000 A/A1



TE 1000 C

FEATURES & BENEFITS

- 3/16" standard thick tempered glass
- Includes fixed panel(s)
- Pencil polished edges
- Double towel bar
- Handle Mounted on Glass
- Available in custom glass sizes and textures
- Available in different configurations
- For pricing, standard or custom, contact customer service

GLASS TEXTURES



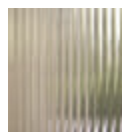
3/16" Clear



3/16" Obscure



3/16" Rain



1/4" Narrow Reed

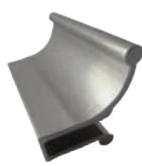
AVAILABLE COLORS



Polished Chrome



Oil Rubbed Bronze



Brushed Nickel



Matte Black

WIDTH & HEIGHT OPTIONS

TE-1000A			TE 1000A1			TE 1000 C		
Width x Height			Width x Height			Width x Height		
72"	x	54 3/4"	84"	x	54 3/4"	60"	x	54 3/4"
72"	x	55 1/2"	84"	x	55 1/2"	60"	x	55 1/2"
72"	x	56 3/4"	84"	x	56 3/4"	60"	x	56 3/4"
72"	x	57 3/4"	84"	x	57 3/4"	60"	x	57 3/4"
72"	x	58 3/4"	84"	x	58 3/4"	60"	x	58 3/4"
72"	x	60 1/4"	84"	x	60 1/4"	60"	x	60 1/4"
72"	x	62 3/4"	84"	x	62 3/4"	60"	x	62 3/4"

These units can be ordered up to 72" Notched Panel Charge - \$25.00 Net Charge per Notched Panel.

TUB & SHOWER ENCLOSURES

SE-1000 FRAMELESS SHOWER ENCLOSURES



FEATURES & BENEFITS

- 3/16" standard thick tempered glass
- Pencil polished edges
- Double towel bar
- Handle mounted on glass
- Available in custom glass sizes and textures
- List prices provided are for standard 3/16" thick glass in our most popular finishes including Polished Chrome, Brushed Nickel, Oil Rubbed Bronze and Matte Black
- For custom sized units, or units requiring specialty or non-stock glass, please contact customer service for pricing
- Pricing & availability is based on glass being in stock

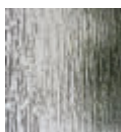
GLASS TEXTURES



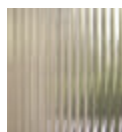
3/16" Clear



3/16" Obscure



3/16" Rain



1/4" Narrow Reed

SE 1000 Header



SE 1000 Towel Bar



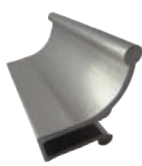
AVAILABLE COLORS



Polished Chrome



Oil Rubbed Bronze



Brushed Nickel

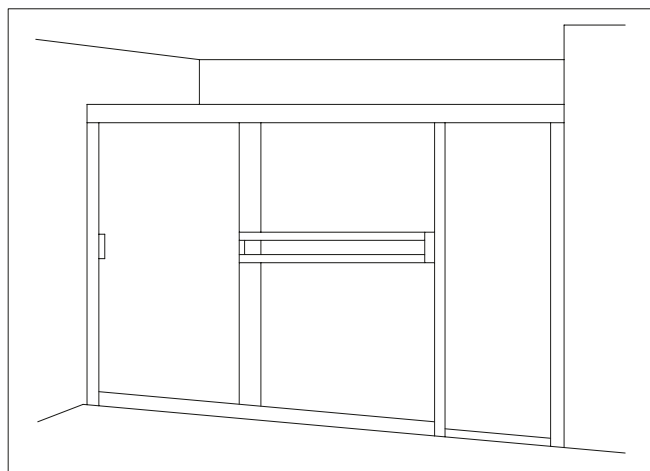


Matte Black

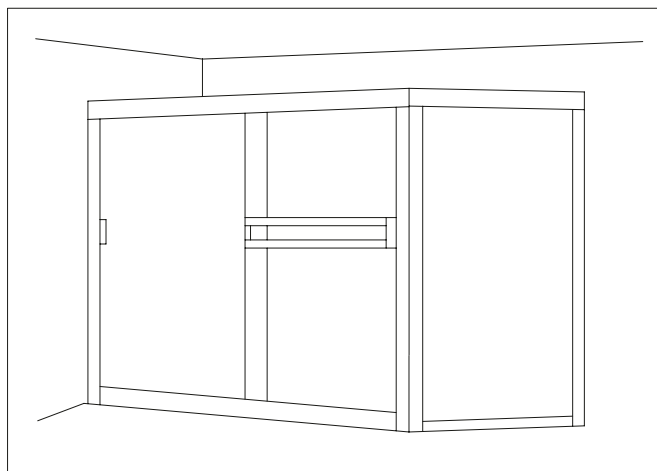
WIDTH & HEIGHT OPTIONS

SE-1000			Chrome	Oil Rubbed Bronze	Brushed Nickel	Matte Black
Width x Height			List Price	List Price	List Price	List Price
44 1/2"	x	65"	\$196	\$278	\$278	\$278
48"	x	65 3/4"	\$196	\$278	\$278	\$278
57 1/2"	x	65 3/4"	\$218	\$310	\$310	\$310
60"	x	65 3/4"	\$218	\$310	\$310	\$310
48"	x	67 3/4"	\$196	\$278	\$278	\$278
54"	x	67 3/4"	\$218	\$310	\$310	\$310
57 1/2"	x	67 3/4"	\$218	\$310	\$310	\$310
60"	x	67 3/4"	\$218	\$310	\$310	\$310
42"	x	70 3/4"	\$196	\$278	\$278	\$278
48"	x	70 3/4"	\$200	\$284	\$284	\$284
54"	x	70 3/4"	\$222	\$315	\$315	\$315
57 1/2"	x	70 3/4"	\$222	\$315	\$315	\$315
60"	x	70 3/4"	\$222	\$315	\$315	\$315
66"	x	70 3/4"	\$234	\$332	\$332	\$332
72"	x	70 3/4"	\$270	\$383	\$383	\$383

SE-1000A/A1/C FRAMELESS SHOWER ENCLOSURES WITH PANELS



SE 1000 A/A1



SE 1000 C

GLASS TEXTURES



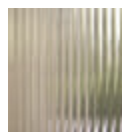
3/16" Clear



3/16" Obscure



3/16" Rain



1/4" Narrow Reed

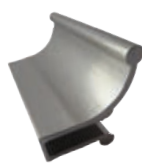
AVAILABLE COLORS



Polished Chrome



Oil Rubbed Bronze



Brushed Nickel



Matte Black

FEATURES & BENEFITS

- 3/16" standard thick tempered glass
- Includes fixed panel(s)
- Pencil polished edges
- Double towel bar
- Handle mounted on glass
- Available in custom glass sizes and textures
- Available in different configurations
- For pricing, standard or custom, contact customer service

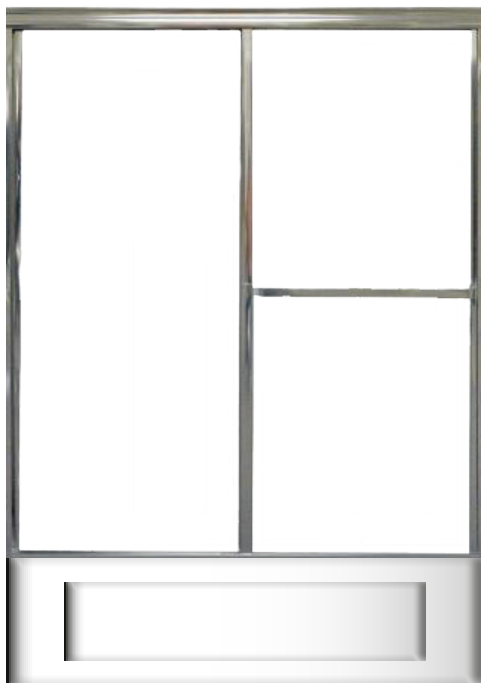
WIDTH & HEIGHT OPTIONS

<u>SE-1000A</u>			<u>SE 1000A1</u>			<u>SE 1000 C</u>		
<u>Width x Height</u>			<u>Width x Height</u>			<u>Width x Height</u>		
72"	x	65 3/4"	84"	x	65 3/4"	60"	x	65 3/4"
72"	x	67 3/4"	84"	x	67 3/4"	60"	x	67 3/4"
72"	x	70 3/4"	84"	x	70 3/4"	60"	x	70 3/4"

These units can be ordered up to the largest size listed. Notched Panel Charge - \$25.00 Net Charge per Notched Panel.

TUB & SHOWER ENCLOSURES

TE-1100 LIGHT FRAMED TUB ENCLOSURES



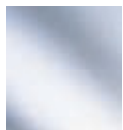
FEATURES & BENEFITS

- These units are available with 1/8" clear and rain glass
- Features a single towel bar and handle that are attached to the frame around glass
- Pricing and availability is based on glass being in stock



TE 1100 Towel Bar

GLASS TEXTURES



1/8" Clear



1/8" Rain

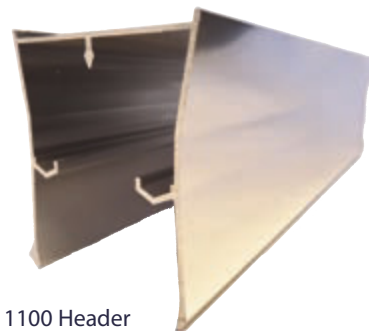
AVAILABLE COLORS



Polished Chrome



Brushed Nickel



TE 1100 Header

WIDTH & HEIGHT OPTIONS

<u>TE-1100</u>		<u>Chrome</u>	<u>Brushed Nickel</u>
<u>Width x Height</u>		<u>List Price</u>	<u>List Price</u>
59 1/2"	x 54 7/8"	\$324	\$393
58"	x 56 7/8"	\$324	\$393
59 1/2"	x 60 3/8"	\$324	\$393

SE-1100 LIGHT FRAMED SHOWER ENCLOSURES

FEATURES & BENEFITS

- These units are available with 1/8" clear and rain glass
- Features a single towel bar and handle that are attached to the frame around glass
- Pricing and availability is based on glass being in stock



SE 1100 Towel Bar

GLASS TEXTURES



1/8" Clear



1/8" Rain

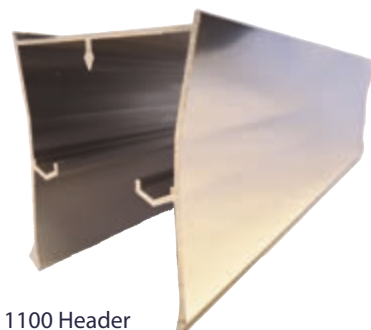
AVAILABLE COLORS



Polished Chrome



Brushed Nickel



SE 1100 Header

WIDTH & HEIGHT OPTIONS

<u>SE-1100</u>		<u>Chrome</u>	<u>Brushed Nickel</u>
<u>Width x Height</u>		<u>List Price</u>	<u>List Price</u>
47 1/2"	x 63 1/2"	\$335	\$405
59 1/2"	x 63 1/2"	\$335	\$405
59 1/2"	x 67"	\$335	\$405

TUB & SHOWER ENCLOSURES

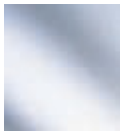
TE-1200 LIGHT FRAMED TUB ENCLOSURES



FEATURES & BENEFITS

- These units are available with 5/32" clear and rain glass
- Features euro style towel bar and knob that are mounted through the glass
- Pricing and availability is based on glass being in stock

GLASS TEXTURES



5/32" Clear



5/32" Rain

AVAILABLE COLORS



Polished Chrome

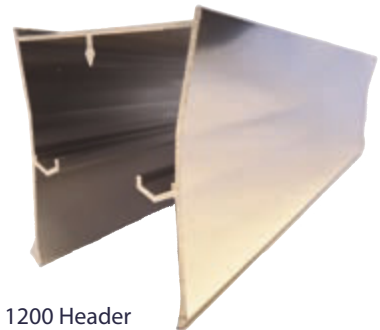


Brushed Nickel

WIDTH & HEIGHT OPTIONS



TE 1200 Towel Bar



TE 1200 Header

<u>TE-1200</u>	
<u>Width x Height</u>	
59 1/2"	x 54 7/8"
58"	x 56 7/8"
59 1/2"	x 60 3/8"

Chrome

List Price

\$378
\$378
\$378

Brushed Nickel

List Price

\$450
\$450
\$450

SE-1200 LIGHT FRAMED SHOWER ENCLOSURES

FEATURES & BENEFITS

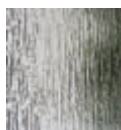
- These units are available with 5/32" clear and rain glass
- Features euro style towel bar and knob that are mounted through the glass
- Pricing and availability is based on glass being in stock



GLASS TEXTURES



5/32" Clear



5/32" Rain

AVAILABLE COLORS



Polished Chrome

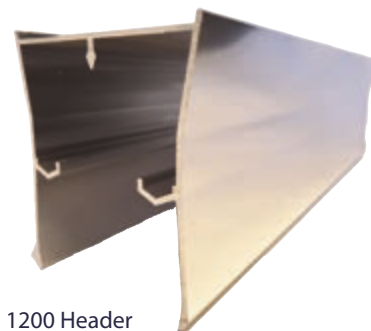


Brushed Nickel

WIDTH & HEIGHT OPTIONS



SE 1200 Towel Bar

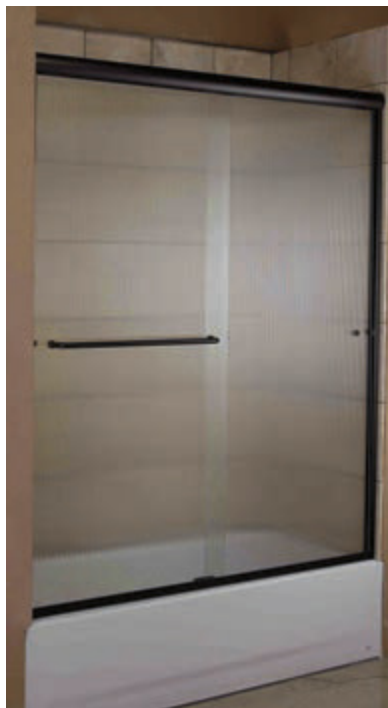


SE 1200 Header

<u>SE-1200</u>	<u>Chrome</u>	<u>Brushed Nickel</u>
<u>Width x Height</u>	<u>List Price</u>	<u>List Price</u>
47 1/2" x 63 1/2"	\$347	\$420
59 1/2" x 63 1/2"	\$385	\$465
59 1/2" x 67"	\$385	\$465

TUB & SHOWER ENCLOSURES

TE-2000 FRAMELESS EURO TUB ENCLOSURES



FEATURES & BENEFITS

- 1/4" standard thick tempered glass
- Pencil polished edges
- Euro style towel bar and knob mounted through glass
- Unique finger-pull design on the towel bar and knob for ease of use and safety
- 7/8" diameter heavy-duty precision rollers
- Available in custom glass sizes and textures
- List prices provided are for standard 1/4" thick glass in our most popular finishes including Polished Chrome, Brushed Nickel, Polished Brass, Oil Rubbed Bronze and Matte Black
- For custom sized units, or units requiring specialty or non-stock glass, please contact customer service for pricing
- Pricing & availability is based on glass being in stock

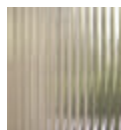
GLASS TEXTURES



1/4" Clear



1/4" Rain



1/4" Narrow Reed

AVAILABLE COLORS



Polished Chrome



Oil Rubbed Bronze



Brushed Nickel

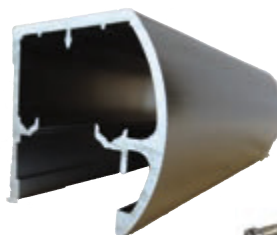


Polished Brass



Matte Black

TE 2000 Header



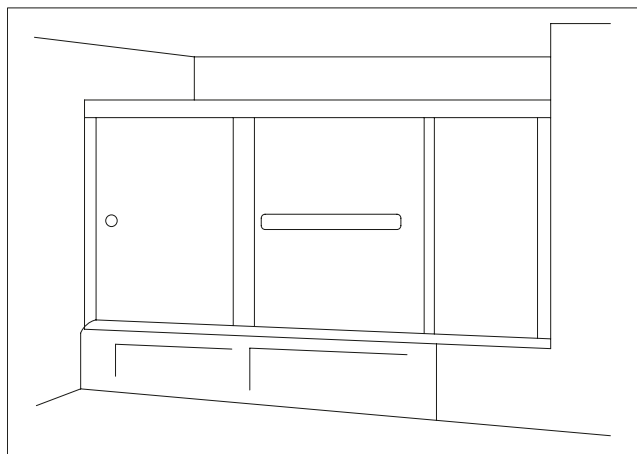
TE 2000 Single Mount Towel Bar



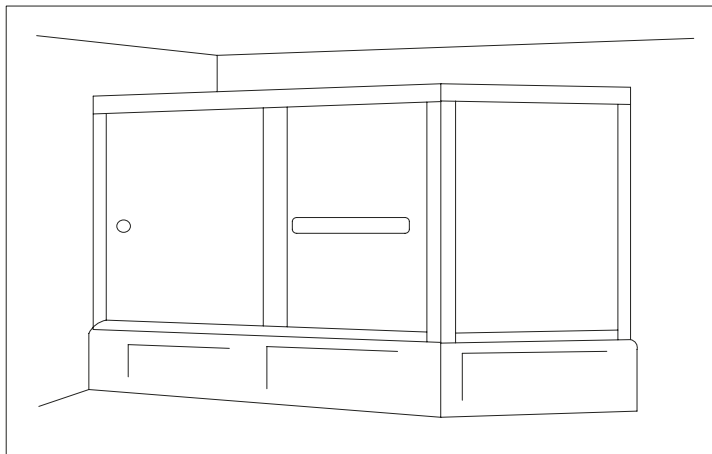
WIDTH & HEIGHT OPTIONS

TE-2000 Width x Height		Chrome List Price	Oil Rubbed Bronze List Price	Brushed Nickel List Price	Polished Brass List Price	Matte Black List Price
57 1/2"	x 54 3/4"	\$525	\$746	\$746	\$746	\$746
54"	x 57 3/4"	\$525	\$746	\$746	\$746	\$746
57 1/2"	x 57 3/4"	\$525	\$746	\$746	\$746	\$746
60"	x 57 3/4"	\$525	\$746	\$746	\$746	\$746
66"	x 57 3/4"	\$570	\$809	\$809	\$809	\$809
72"	x 57 3/4"	\$570	\$809	\$809	\$809	\$809
57 1/2"	x 60 1/4"	\$570	\$809	\$809	\$809	\$809
60"	x 60 1/4"	\$570	\$809	\$809	\$809	\$809
66"	x 60 1/4"	\$570	\$809	\$809	\$809	\$809
57 1/2"	x 62 3/4"	\$570	\$809	\$809	\$809	\$809
60"	x 62 3/4"	\$570	\$809	\$809	\$809	\$809
66"	x 62 3/4"	\$570	\$809	\$809	\$809	\$809
72"	x 62 3/4"	\$570	\$809	\$809	\$809	\$809

TE-2000A/A1/C FRAMELESS EURO TUB ENCLOSURES WITH PANELS



TE 2000 A/A1



TE 2000 C

FEATURES & BENEFITS

- 1/4" standard thick tempered glass
- Includes fixed panel(s) in 3/16" glass
- Pencil polished edges
- Euro style towel bar & knob mounted through glass
- Unique finger-pull design on the towel bar & knob for ease of use & safety
- 7/8" diameter heavy-duty precision roller
- Available in custom glass sizes & textures
- Available in different configurations
- Contact customer service for standard or custom pricing

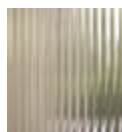
GLASS TEXTURES



1/4" Clear



1/4" Rain



1/4" Narrow Reed

AVAILABLE COLORS



Polished Chrome



Oil Rubbed Bronze



Brushed Nickel



Polished Brass



Matte Black

WIDTH & HEIGHT OPTIONS

<u>TE-2000A</u>		
<u>Width x Height</u>		
72"	x	57 3/4"
72"	x	60 1/4"
72"	x	62 3/4"

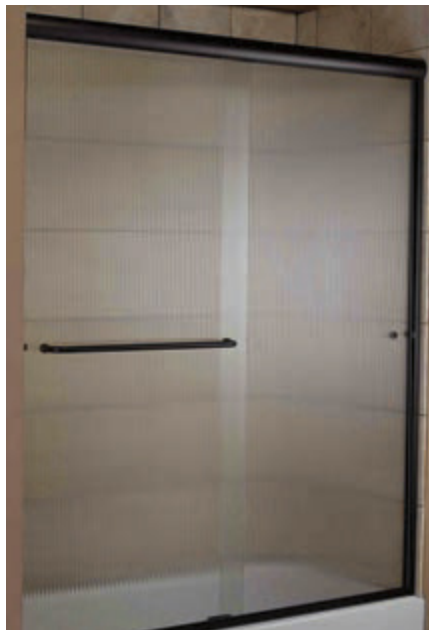
<u>TE 2000A1</u>		
<u>Width x Height</u>		
84"	x	57 3/4"
84"	x	60 1/4"
84"	x	62 3/4"

<u>TE 2000 C</u>		
<u>Width x Height</u>		
60"	x	57 3/4"
60"	x	60 1/4"
60"	x	62 3/4"

These units can be ordered up to the largest size listed. Notched Panel Charge - \$25.00 Net Charge per Notched Panel.

TUB & SHOWER ENCLOSURES

SE-2000 FRAMELESS EURO SHOWER ENCLOSURES



FEATURES & BENEFITS

- 1/4" standard thick tempered glass
- Pencil polished edges
- Euro style towel bar and knob mounted through glass
- Unique finger-pull design on the towel bar and knob for ease of use and safety
- 7/8" diameter heavy-duty precision rollers
- Available in custom glass sizes and textures
- List prices provided are for standard 1/4" thick glass in our most popular finishes including Chrome, Oil Rubbed Bronze, Brushed Nickel, Polished Brass and Matte Black
- For custom sized units, or units requiring specialty or non-stock glass, please contact customer service for pricing
- Pricing & availability is based on glass being in stock

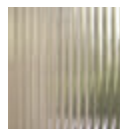
GLASS TEXTURES



1/4" Clear



1/4" Rain



1/4" Narrow Reed

AVAILABLE COLORS



Polished Chrome



Oil Rubbed Bronze



Brushed Nickel



Polished Brass



Matte Black



SE 2000 Header

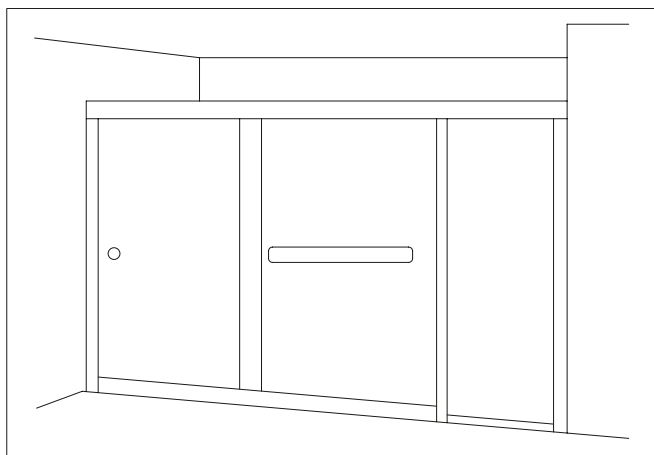


SE 2000
Single Mount Towel Bar

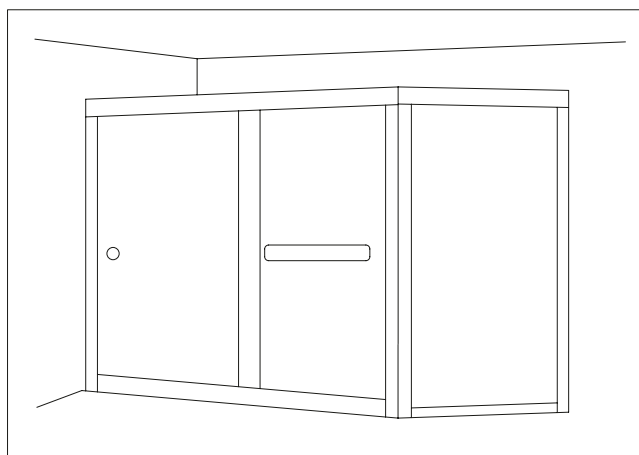
WIDTH & HEIGHT OPTIONS

<u>SE-2000</u>		<u>Chrome</u>	<u>Oil Rubbed Bronze</u>	<u>Brushed Nickel</u>	<u>Polished Brass</u>	<u>Matte Black</u>
<u>Width x Height</u>		<u>List Price</u>	<u>List Price</u>	<u>List Price</u>	<u>List Price</u>	<u>List Price</u>
57 1/2"	x 65 3/4"	\$570	\$809	\$809	\$809	\$809
60"	x 65 3/4"	\$570	\$809	\$809	\$809	\$809
66"	x 65 3/4"	\$570	\$809	\$809	\$809	\$809
48"	x 67 3/4"	\$491	\$697	\$697	\$697	\$697
54"	x 67 3/4"	\$570	\$809	\$809	\$809	\$809
57 1/2"	x 67 3/4"	\$570	\$809	\$809	\$809	\$809
60"	x 67 3/4"	\$570	\$809	\$809	\$809	\$809
66"	x 67 3/4"	\$570	\$809	\$809	\$809	\$809
48"	x 70 3/4"	\$491	\$697	\$697	\$697	\$697
54"	x 70 3/4"	\$570	\$809	\$809	\$809	\$809
57 1/2"	x 70 3/4"	\$570	\$809	\$809	\$809	\$809
60"	x 70 3/4"	\$570	\$809	\$809	\$809	\$809
66"	x 70 3/4"	\$570	\$809	\$809	\$809	\$809
72"	x 70 3/4"	\$570	\$809	\$809	\$809	\$809
48"	x 75 1/4"	\$630	\$770	\$770	\$770	\$770
54"	x 75 1/4"	\$713	\$850	\$850	\$850	\$850
60"	x 75 1/4"	\$713	\$850	\$850	\$850	\$850
66"	x 75 1/4"	\$713	\$850	\$850	\$850	\$850
72"	x 75 1/4"	\$713	\$850	\$850	\$850	\$850

SE-2000A/A1/C FRAMELESS EURO SHOWER ENCLOSURES WITH PANELS



SE 2000 A/A1



SE 2000 C

FEATURES & BENEFITS

- 1/4" standard thick tempered glass
- Includes fixed panel(s) in 3/16" glass
- Pencil polished edges
- Euro style towel bar & knob mounted through glass
- Unique finger-pull design on the towel bar & knob for ease of use and safety
- 7/8" diameter heavy-duty precision rollers
- Available in custom glass sizes and textures
- Available in different configurations
- Contact customer service for standard or custom pricing

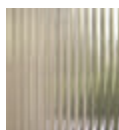
GLASS TEXTURES



1/4" Clear



1/4" Rain



1/4" Narrow Reed

AVAILABLE COLORS



Polished Chrome



Oil Rubbed Bronze



Brushed Nickel



Polished Brass



Matte Black

WIDTH & HEIGHT OPTIONS

<u>SE-2000A</u>			<u>SE 2000A1</u>			<u>SE 2000 C</u>		
<u>Width x Height</u>			<u>Width x Height</u>			<u>Width x Height</u>		
72"	x	65 3/4"	84"	x	65 3/4"	60"	x	65 3/4"
72"	x	67 3/4"	84"	x	67 3/4"	60"	x	67 1/4"
72"	x	70 3/4"	84"	x	70 3/4"	60"	x	70 3/4"
72"	x	75 1/4"	84"	x	75 1/4"	60"	x	75 1/4"

These units can be ordered up to the largest size listed. Notched Panel Charge - \$25.00 Net Charge per Notched Panel.

TUB & SHOWER ENCLOSURES

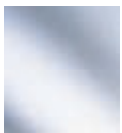
TE-3000 FRAMED TUB ENCLOSURES



FEATURES & BENEFITS

- 3/16" standard thick tempered glass
- Double towel bar
- Handle mounted in frame
- Available in custom glass sizes and textures
- List prices provided are for standard 3/16" thick glass in our most popular finishes including Chrome, and Brushed Nickel
- For custom sized units, or units requiring specialty or non-stock glass, please contact customer service for pricing
- Pricing & availability is based on glass being in stock

GLASS TEXTURES



3/16" Clear



3/16" Obscure

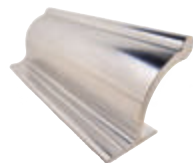


3/16" Rain

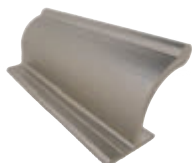


1/4" Narrow Reed

AVAILABLE COLORS



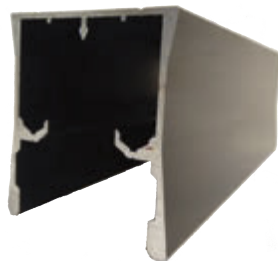
Polished Chrome



Brushed Nickel

WIDTH & HEIGHT OPTIONS

TE 3000 Header

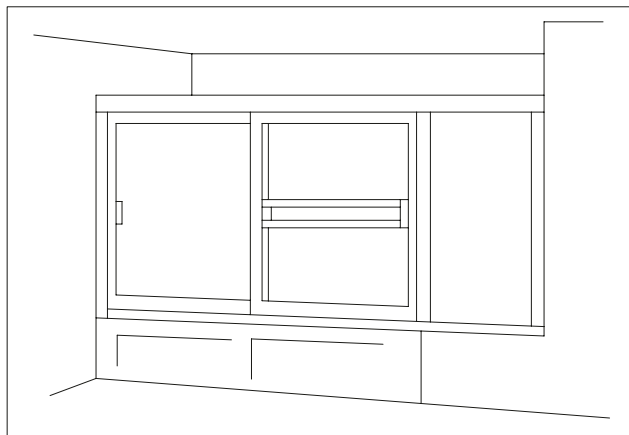


TE 3000 Handle

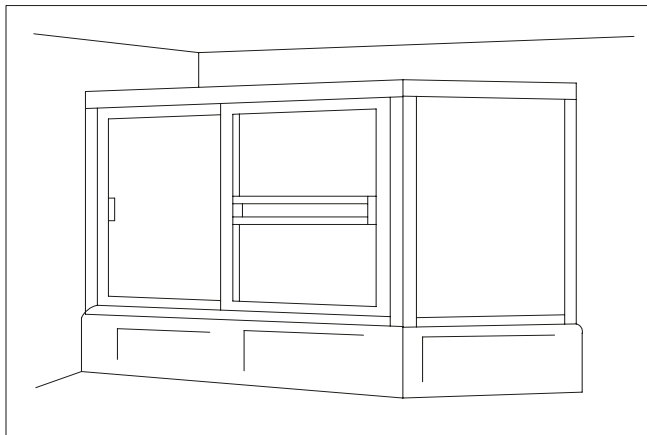


TE-3000		Chrome	Brushed Nickel
Width x Height		List Price	List Price
57 1/2"	x 56 1/4"	\$630	\$895
57 1/2"	x 57"	\$630	\$895
42"	x 58 1/4"	\$630	\$895
48"	x 58 1/4"	\$630	\$895
54"	x 58 1/4"	\$630	\$895
56"	x 58 1/4"	\$630	\$895
60"	x 58 1/4"	\$630	\$895
66"	x 58 1/4"	\$669	\$950
72"	x 58 1/4"	\$774	\$1,100
60"	x 59 1/4"	\$630	\$895
60"	x 60 1/4"	\$698	\$991
57 1/2"	x 61 3/4"	\$698	\$991
60"	x 61 3/4"	\$698	\$991
60"	x 64 1/4"	\$698	\$991

TE-3000A/A1/C FRAMED TUB ENCLOSURES WITH PANELS



TE 3000 A/A1



TE 3000 C

GLASS TEXTURES



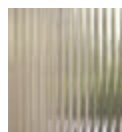
3/16" Clear



3/16" Obscure

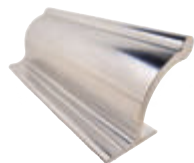


3/16" Rain

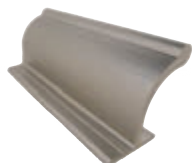


1/4" Narrow Reed

AVAILABLE COLORS



Polished Chrome



Brushed Nickel

FEATURES & BENEFITS

- 3/16" standard thick tempered glass
- Includes fixed panel(s)
- Double towel bar
- Handle mounted in frame
- Available in custom glass sizes and textures
- List prices provided are for standard 3/16" thick glass in our most popular finishes including Chrome, and Brushed Nickel
- Available in different configurations
- For pricing, standard or custom, contact customer service

WIDTH & HEIGHT OPTIONS

<u>TE-3000A</u>			<u>TE 3000A1</u>			<u>TE 3000 C</u>		
<u>Width x Height</u>			<u>Width x Height</u>			<u>Width x Height</u>		
72"	x	58 1/4"	84"	x	58 1/4"	60"	x	58 1/4"
72"	x	64 1/4"	84"	x	64 1/4"	60"	x	64 1/4"

These units can be ordered up to the largest size listed. Notched Panel Charge - \$25.00 Net Charge per Notched Panel.

TUB & SHOWER ENCLOSURES

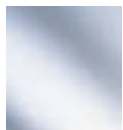
SE-3000 FRAMED SHOWER ENCLOSURES



FEATURES & BENEFITS

- 3/16" standard thick tempered glass
- Double towel bar
- Handle mounted in frame
- Available in custom glass sizes and textures
- List prices provided are for standard 3/16" thick glass in our most popular finishes including Chrome, and Brushed Nickel
- For custom sized units, or units requiring specialty or non-stock glass, please contact customer service for pricing
- Pricing & availability is based on glass being in stock

GLASS TEXTURES



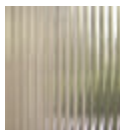
3/16" Clear



3/16" Obscure

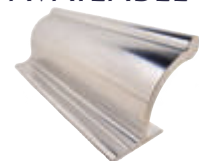


3/16" Rain

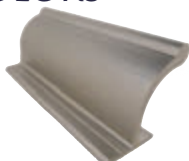


1/4" Narrow Reed

AVAILABLE COLORS

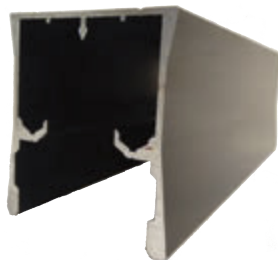


Polished Chrome



Brushed Nickel

SE 3000 Header



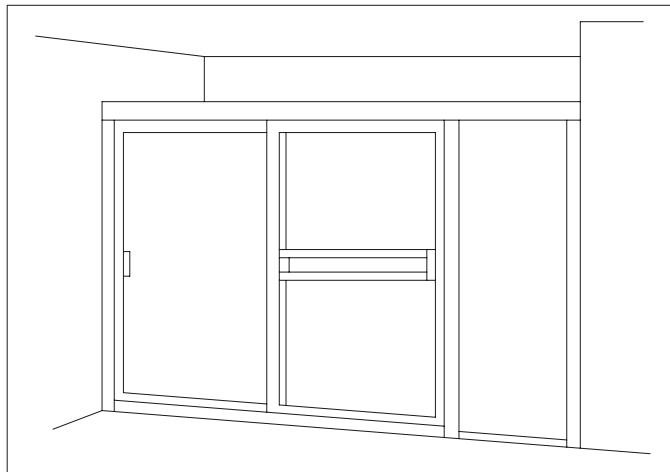
SE 3000 Handle



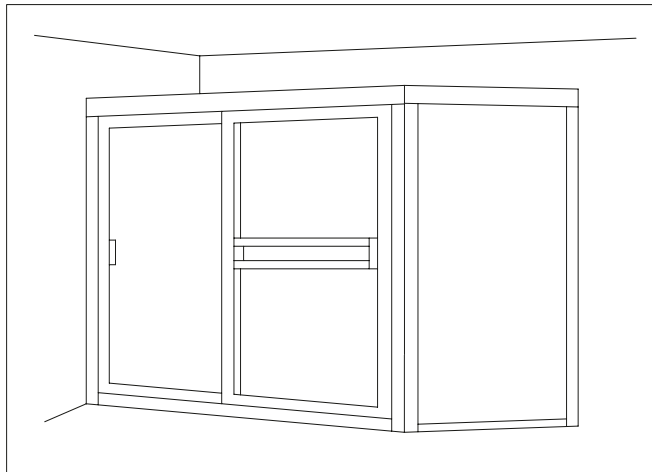
WIDTH & HEIGHT OPTIONS

<u>SE-3000</u>		<u>Chrome</u>	<u>Brushed Nickel</u>
<u>Width x Height</u>		<u>List Price</u>	<u>List Price</u>
44 1/2"	x 66 1/2"	\$661	\$938
48"	x 67 1/4"	\$661	\$938
57 1/2"	x 67 1/4"	\$735	\$1,043
60"	x 67 1/4"	\$735	\$1,043
48"	x 69 1/4"	\$661	\$938
54"	x 69 1/4"	\$735	\$1,043
60"	x 69 1/4"	\$735	\$1,043
42"	x 72 1/4"	\$661	\$938
48"	x 72 1/4"	\$674	\$957
54"	x 72 1/4"	\$748	\$1,062
60"	x 72 1/4"	\$748	\$1,062
66"	x 72 1/4"	\$789	\$1,120
72"	x 72 1/4"	\$910	\$1,292

SE-3000A/A1/C FRAMED SHOWER ENCLOSURES WITH PANELS



SE 3000 A/A1



SE 3000 C

GLASS TEXTURES



3/16" Clear



3/16" Obscure

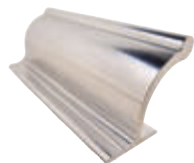


3/16" Rain

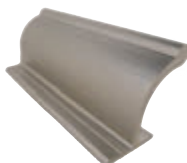


1/4" Narrow Reed

AVAILABLE COLORS



Polished Chrome



Brushed Nickel

FEATURES & BENEFITS

- 3/16" standard thick tempered glass
- Includes fixed panel(s)
- Double towel bar
- Handle mounted in frame
- Available in custom glass sizes and textures
- List prices provided are for standard 3/16" thick glass in our most popular finishes including Chrome, and Brushed Nickel
- Available in different configurations
- For pricing, standard or custom, contact customer service

WIDTH & HEIGHT OPTIONS

<u>SE-3000A</u>			<u>SE 3000A1</u>			<u>SE 3000 C</u>		
<u>Width x Height</u>			<u>Width x Height</u>			<u>Width x Height</u>		
72"	x	69 1/4"	84"	x	69 1/4"	60"	x	69 1/4"
72"	x	72 1/4"	84"	x	72 1/4"	60"	x	72 1/4"

These units can be ordered up to the largest size listed. Notched Panel Charge - \$25.00 Net Charge per Notched Panel.

TUB & SHOWER ENCLOSURES

TE-4000 FRAMELESS LIGHT EURO TUB ENCLOSURES



Shown in Polished Chrome

FEATURES & BENEFITS

- 3/16" standard thick tempered glass
- Pencil polished edges
- Single rounded towel bar
- Handle and towel bar mounted on glass
- Available in custom glass sizes and textures
- List prices provided are for standard 3/16" thick glass in our most popular finishes including Chrome, Oil Rubbed Bronze and Brushed Nickel
- For custom sized units, or units requiring specialty or non-stock glass, please contact customer service for pricing
- Pricing & availability is based on glass being in stock

GLASS TEXTURES



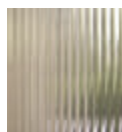
3/16" Clear



3/16" Obscure



3/16" Rain



1/4" Narrow Reed

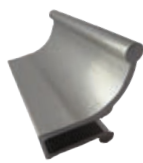
AVAILABLE COLORS



Polished Chrome

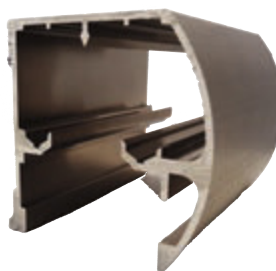


Oil Rubbed Bronze



Brushed Nickel

TE 4000 Header



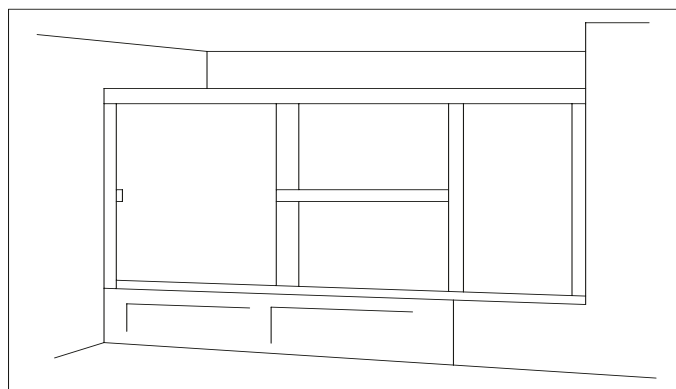
TE 4000 Towel Bar



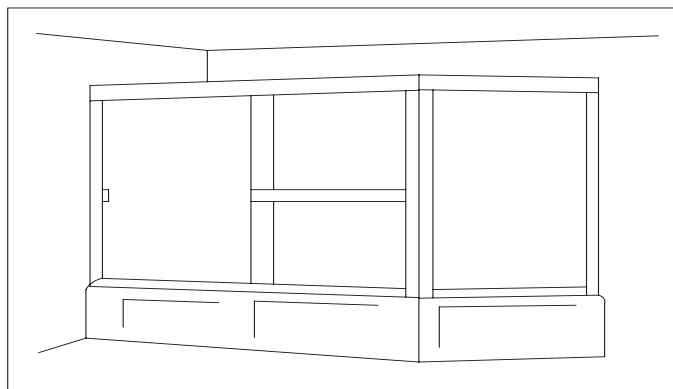
WIDTH & HEIGHT OPTIONS

TE-4000		Chrome	Oil Rubbed Bronze	Brushed Nickel
Width x Height		List Price	List Price	List Price
57 1/2"	x 54 3/4"	\$247	\$328	\$328
57 1/2"	x 55 1/2"	\$247	\$328	\$328
42"	x 56 3/4"	\$247	\$328	\$328
48"	x 56 3/4"	\$247	\$328	\$328
54"	x 56 3/4"	\$247	\$328	\$328
56"	x 56 3/4"	\$247	\$328	\$328
60"	x 56 3/4"	\$247	\$328	\$328
66"	x 56 3/4"	\$259	\$347	\$347
72"	x 56 3/4"	\$292	\$347	\$347
60"	x 57 3/4"	\$247	\$394	\$394
60"	x 58 3/4"	\$268	\$328	\$328
57 1/2"	x 60 1/4"	\$268	\$360	\$360
60"	x 60 1/4"	\$268	\$360	\$360
60"	x 62 3/4"	\$268	\$360	\$360

TE-4000A/A1/C FRAMELESS LIGHT EURO TUB ENCLOSURES WITH PANELS



TE 4000 A/A1



TE 4000 C

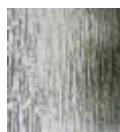
GLASS TEXTURES



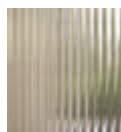
3/16" Clear



3/16" Obscure



3/16" Rain



1/4" Narrow Reed

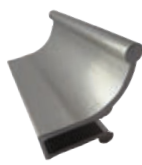
AVAILABLE COLORS



Polished Chrome



Oil Rubbed Bronze



Brushed Nickel

FEATURES & BENEFITS

- 3/16" standard thick tempered glass
- Includes fixed panel(s)
- Pencil polished edges
- Single rounded towel bar
- Handle and towel bar mounted on glass
- Available in custom glass sizes and textures
- Available in different configurations
- For pricing, standard or custom, contact customer service

WIDTH & HEIGHT OPTIONS

<u>TE-4000A</u>			<u>TE 4000A1</u>			<u>TE 4000 C</u>		
<u>Width x Height</u>			<u>Width x Height</u>			<u>Width x Height</u>		
72"	x	54 3/4"	84"	x	54 3/4"	60"	x	54 3/4"
72"	x	55 1/2"	84"	x	55 1/2"	60"	x	55 1/2"
72"	x	56 3/4"	84"	x	56 3/4"	60"	x	56 3/4"
72"	x	57 3/4"	84"	x	57 3/4"	60"	x	57 3/4"
72"	x	58 3/4"	84"	x	58 3/4"	60"	x	58 3/4"
72"	x	60 1/4"	84"	x	60 1/4"	60"	x	60 1/4"
72"	x	62 3/4"	84"	x	62 3/4"	60"	x	62 3/4"

These units can be ordered up to the largest size listed. Notched Panel Charge - \$25.00 Net Charge per Notched Panel.

TUB & SHOWER ENCLOSURES

SE-4000 FRAMELESS LIGHT EURO SHOWER ENCLOSURES



Shown in Polished Chrome

FEATURES & BENEFITS

- 3/16" standard thick tempered glass
- Pencil polished edges
- Single rounded towel bar
- Handle and towel bar mounted on glass
- Available in custom glass sizes and textures
- List prices provided are for standard 3/16" thick glass in our most popular finishes including Chrome, Oil Rubbed Bronze and Brushed Nickel
- For custom sized units, or units requiring specialty or non-stock glass, please contact customer service for pricing
- Pricing & availability is based on glass being in stock

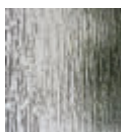
GLASS TEXTURES



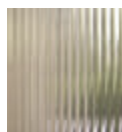
3/16" Clear



3/16" Obscure



3/16" Rain



1/4" Narrow Reed

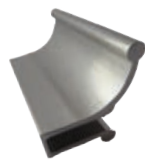
AVAILABLE COLORS



Polished Chrome

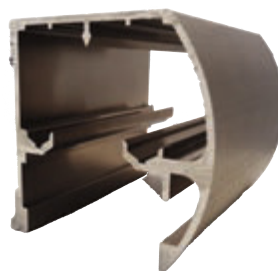


Oil Rubbed Bronze



Brushed Nickel

SE 4000 Header



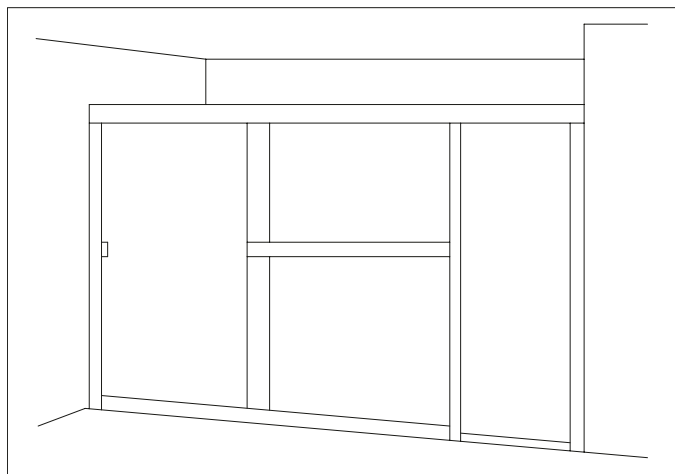
SE 4000 Towel Bar



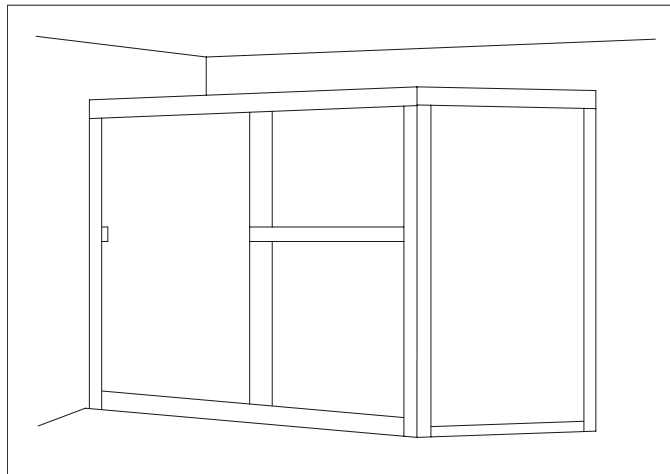
WIDTH & HEIGHT OPTIONS

<u>SE-4000</u>		<u>Chrome</u>	<u>Oil Rubbed Bronze</u>	<u>Brushed Nickel</u>
<u>Width x Height</u>		<u>List Price</u>	<u>List Price</u>	<u>List Price</u>
44 1/2"	x 65"	\$246	\$328	\$328
48"	x 65 3/4"	\$246	\$328	\$328
57 1/2"	x 65 3/4"	\$268	\$360	\$360
60"	x 65 3/4"	\$268	\$360	\$360
48"	x 67 3/4"	\$246	\$328	\$328
54"	x 67 3/4"	\$268	\$360	\$360
60"	x 67 3/4"	\$268	\$360	\$360
42"	x 70 3/4"	\$246	\$328	\$328
48"	x 70 3/4"	\$250	\$334	\$334
54"	x 70 3/4"	\$272	\$365	\$365
60"	x 70 3/4"	\$272	\$365	\$365
66"	x 70 3/4"	\$284	\$382	\$382
72"	x 70 3/4"	\$320	\$433	\$433

SE-4000A/A1/C FRAMELESS LIGHT EURO SHOWER ENCLOSURES WITH PANELS

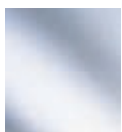


SE 4000 A/A1



SE 4000 C

GLASS TEXTURES



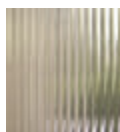
3/16" Clear



3/16" Obscure

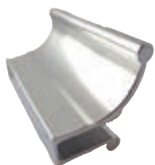


3/16" Rain



1/4" Narrow Reed

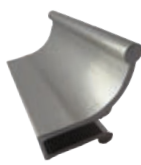
AVAILABLE COLORS



Polished Chrome



Oil Rubbed Bronze



Brushed Nickel

WIDTH & HEIGHT OPTIONS

<u>SE-4000A</u>			<u>SE 4000A1</u>			<u>SE 4000 C</u>		
<u>Width x Height</u>			<u>Width x Height</u>			<u>Width x Height</u>		
72"	x	65 3/4"	84"	x	65 3/4"	60"	x	65 3/4"
72"	x	67 3/4"	84"	x	67 3/4"	60"	x	67 3/4"
72"	x	70 3/4"	84"	x	70 3/4"	60"	x	70 3/4"

FEATURES & BENEFITS

- 3/16" standard thick tempered glass
- Includes fixed panel(s)
- Pencil polished edges
- Single rounded towel bar
- Handle and towel bar mounted on glass
- Available in custom glass sizes and textures
- Available in different configurations
- The price for these units includes any standard unit
- For pricing, standard or custom, contact customer service

These units can be ordered up to the largest size listed. Notched Panel Charge - \$25.00 Net Charge per Notched Panel.

TUB & SHOWER ENCLOSURES

TE-5000 FRAMELESS HEAVY TUB ENCLOSURES



FEATURES & BENEFITS

- 5/16" standard thick tempered glass with clamp on top hanger
- Available in 3/8" clear or rain
- Flat polished edges
- Euro style towel bar and knob mounted through glass
- Unique finger-pull design on the towel bar and knob for ease of use and safety
- 7/8" diameter holes drilled through the glass
- Available in custom glass sizes and textures
- List prices provided are for standard 5/16" thick clear glass in our most popular finishes including Chrome, Oil Rubbed Bronze, Brushed Nickel and Matte Black
- For custom sized units, or units requiring specialty or non-stock glass, please contact customer service for pricing
- Pricing & availability is based on glass being in stock

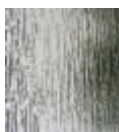
GLASS TEXTURES



5/16" Clear



3/8" Clear



3/8" Rain

AVAILABLE COLORS



Polished Chrome



Oil Rubbed Bronze



Brushed Nickel



Matte Black

TE 5000 Header



TE 5000 Tandem Roller
3/8" only
(Inside)



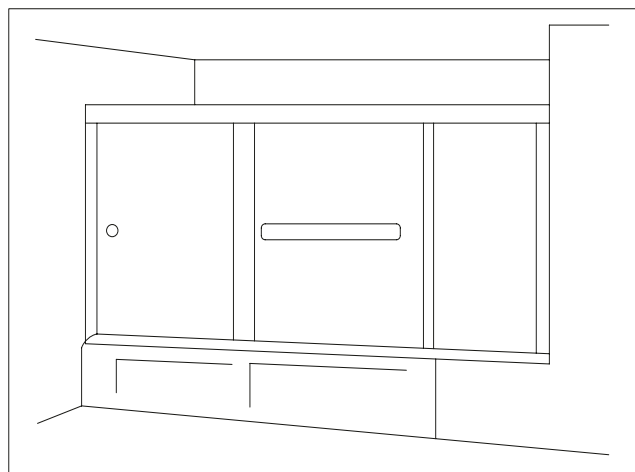
TE 5000 Tandem Roller
3/8" only
(Outside)

WIDTH & HEIGHT OPTIONS

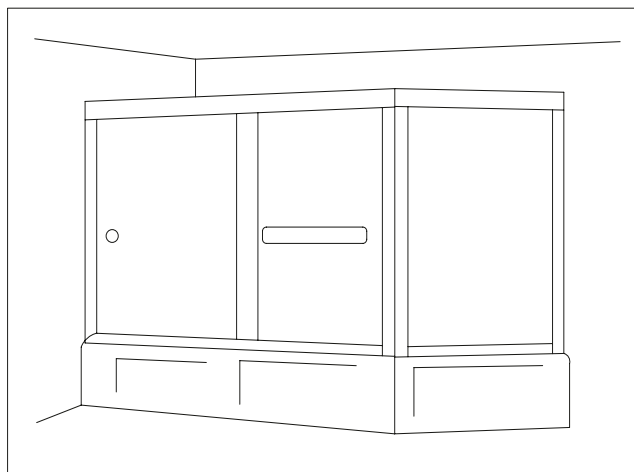
<u>TE-5000</u>		<u>Chrome</u>	<u>Oil Rubbed Bronze</u>	<u>Brushed Nickel</u>	<u>Matte Black</u>
<u>Width x Height</u>		<u>List Price</u>	<u>List Price</u>	<u>List Price</u>	<u>List Price</u>
54"	x 57 3/4"	\$825	\$1,172	\$1,172	\$1,172
57 1/2"	x 57 3/4"	\$825	\$1,172	\$1,172	\$1,172
57 1/2"	x 62 3/4"	\$825	\$1,172	\$1,172	\$1,172
60"	x 57 3/4"	\$825	\$1,172	\$1,172	\$1,172
66"	x 57 3/4"	\$855	\$1,214	\$1,214	\$1,214
72"	x 57 3/4"	\$855	\$1,214	\$1,214	\$1,214
60"	x 60 1/4"	\$855	\$1,214	\$1,214	\$1,214
66"	x 60 1/4"	\$855	\$1,214	\$1,214	\$1,214
57 1/2"	x 62 3/4"	\$855	\$1,214	\$1,214	\$1,214
60"	x 62 3/4"	\$855	\$1,214	\$1,214	\$1,214
66"	x 62 3/4"	\$855	\$1,214	\$1,214	\$1,214
72"	x 62 3/4"	\$855	\$1,214	\$1,214	\$1,214

Please Note* Add \$100.00 Net for 3/8" Clear. Add \$200.00 Net for 3/8" Rain. Availability & price is based on stock.

TE-5000A/A1/C FRAMELESS HEAVY TUB ENCLOSURES WITH PANELS



TE 5000 A/A1



TE 5000 C

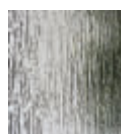
GLASS TEXTURES



5/16" Clear



3/8" Clear



3/8" Rain

AVAILABLE COLORS



Polished Chrome



Oil Rubbed Bronze



Brushed Nickel



Matte Black

WIDTH & HEIGHT OPTIONS

FEATURES & BENEFITS

- 5/16" standard thick tempered glass with clamp on top hanger
- Available in 3/8" clear or rain
- Includes 3/16" thick standard fixed panel
- Flat polished edges
- Euro style towel bar and knob mounted through glass
- Unique finger-pull design on the towel bar and knob for ease of use and safety
- 7/8" diameter holes drilled through the glass
- Various widths/heights available
- Available in custom glass sizes and textures
- Available in different configurations
- For pricing, standard or custom, contact customer service

<u>TE-5000A</u>		
<u>Width x Height</u>		
72"	x	57 3/4"
72"	x	60 1/4"
72"	x	62 3/4"

<u>TE 5000A1</u>		
<u>Width x Height</u>		
84"	x	57 3/4"
84"	x	60 1/4"
84"	x	62 3/4"

<u>TE 5000 C</u>		
<u>Width x Height</u>		
60"	x	57 3/4"
60"	x	60 1/4"
60"	x	62 3/4"

These units can be ordered up to the largest size listed. Notched Panel Charge - \$25.00 Net Charge per Notched Panel.

TUB & SHOWER ENCLOSURES

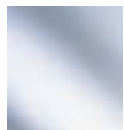
SE-5000 FRAMELESS HEAVY SHOWER ENCLOSURES



FEATURES & BENEFITS

- 5/16" standard thick tempered glass with clamp on top hanger
- Available in 3/8" clear or rain
- Flat polished edges
- Euro style towel bar and knob mounted through glass
- Unique finger-pull design on the towel bar and knob for ease of use and safety
- 7/8" diameter holes drilled through the glass
- Available in custom glass sizes and textures
- List prices provided are for standard 5/16" thick clear glass in our most popular finishes including Chrome, Oil Rubbed Bronze, Brushed Nickel and Matte Black
- For custom sized units, or units requiring specialty or non-stock glass, please contact customer service for pricing
- Pricing & availability is based on glass being in stock

GLASS TEXTURES



5/16" Clear



3/8" Clear



3/8" Rain

AVAILABLE COLORS



Polished Chrome



Oil Rubbed Bronze



Brushed Nickel



Matte Black

SE 5000 Header



SE 5000 Tandem Roller
3/8" only
(Inside)



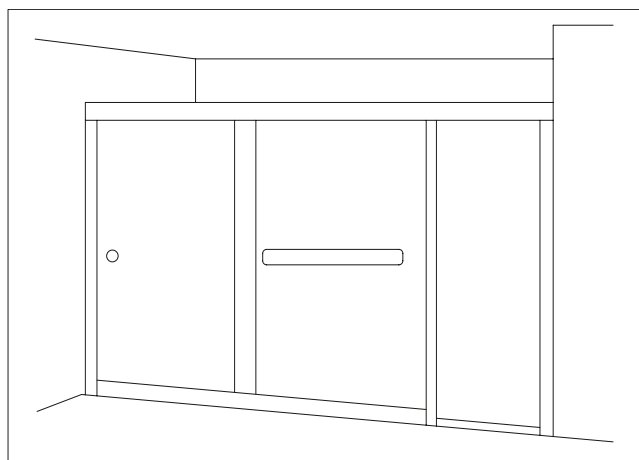
SE 5000 Tandem Roller
3/8" only
(Outside)

WIDTH & HEIGHT OPTIONS

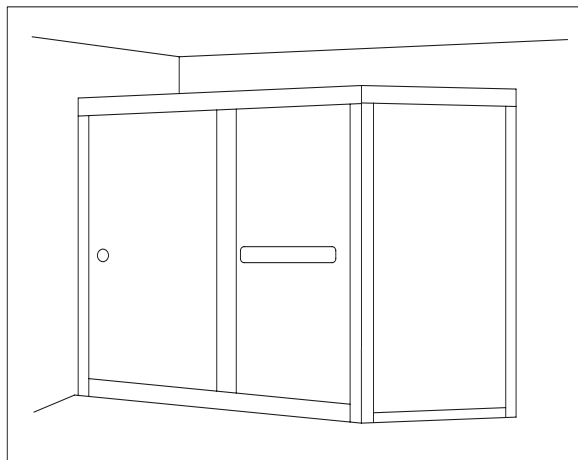
SE-5000		Chrome	Oil Rubbed Bronze	Brushed Nickel	Matte Black
Width x Height		List Price	List Price	List Price	List Price
60"	x 65 3/4"	\$903	\$1,282	\$1,282	\$1,282
66"	x 65 3/4"	\$903	\$1,282	\$1,282	\$1,282
48"	x 67 3/4"	\$778	\$1,106	\$1,106	\$1,106
54"	x 67 3/4"	\$903	\$1,282	\$1,282	\$1,282
57 1/2"	x 67 3/4"	\$903	\$1,282	\$1,282	\$1,282
60"	x 67 3/4"	\$903	\$1,282	\$1,282	\$1,282
66"	x 67 3/4"	\$903	\$1,282	\$1,282	\$1,282
48"	x 70 3/4"	\$778	\$1,106	\$1,106	\$1,106
54"	x 70 3/4"	\$903	\$1,282	\$1,282	\$1,282
57 1/2"	x 70 3/4"	\$903	\$1,282	\$1,282	\$1,282
60"	x 70 3/4"	\$903	\$1,282	\$1,282	\$1,282
66"	x 70 3/4"	\$903	\$1,282	\$1,282	\$1,282
72"	x 70 3/4"	\$933	\$1,325	\$1,325	\$1,325
48"	x 75 1/4"	\$778	\$1,106	\$1,106	\$1,106
54"	x 75 1/4"	\$933	\$1,325	\$1,325	\$1,325
60"	x 75 1/4"	\$933	\$1,325	\$1,325	\$1,325
66"	x 75 1/4"	\$933	\$1,325	\$1,325	\$1,325
72"	x 75 1/4"	\$933	\$1,325	\$1,325	\$1,325
60"	x 80 1/4"	\$933	\$1,325	\$1,325	\$1,325
66"	x 80 1/4"	\$933	\$1,325	\$1,325	\$1,325
72"	x 80 1/4"	\$933	\$1,325	\$1,325	\$1,325

Please Note* Add \$100.00 Net for 3/8" Clear. Add \$200.00 Net for 3/8" Rain. Availability & price is based on stock.

SE-5000A/A1/C FRAMELESS HEAVY SHOWER ENCLOSURES WITH PANELS

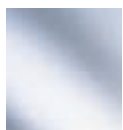


SE 5000 A/A1



SE 5000 C

GLASS TEXTURES



5/16" Clear



3/8" Clear



3/8" Rain

AVAILABLE COLORS



Polished Chrome



Oil Rubbed Bronze



Brushed Nickel



Matte Black

FEATURES & BENEFITS

- 5/16" standard thick tempered glass with clamp on top hanger
- Available in 3/8" clear or rain
- Includes 3/16" thick standard fixed panel
- Flat polished edges
- Euro style towel bar and knob mounted through glass
- Unique finger-pull design on the towel bar and knob for ease of use and safety
- 7/8" diameter holes drilled through the glass
- Various widths/heights available
 - Available in custom glass sizes and textures
 - Available in different configurations
 - Price includes any standard unit
 - For standard or custom pricing, contact us

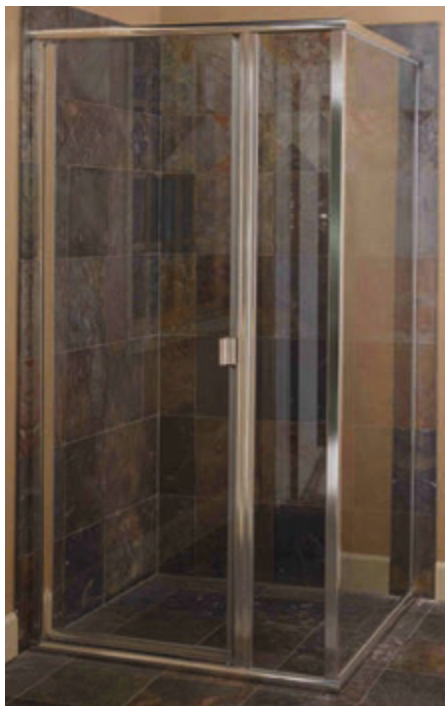
WIDTH & HEIGHT OPTIONS

<u>SE-5000A</u>			<u>SE 5000A1</u>			<u>SE 5000 C</u>		
<u>Width x Height</u>			<u>Width x Height</u>			<u>Width x Height</u>		
72"	x	65 3/4"	84"	x	65 3/4"	60"	x	65 3/4"
72"	x	67 3/4"	84"	x	67 3/4"	60"	x	67 3/4"
72"	x	70 3/4"	84"	x	70 3/4"	60"	x	70 3/4"
72"	x	75 1/4"	84"	x	75 1/4"	60"	x	75 1/4"
72"	x	80 1/4"	84"	x	80 1/4"	60"	x	80 1/4"

These units can be ordered up to the largest size listed. Notched Panel Charge - \$25.00 Net Charge per Notched Panel.

PIVOT & SWING DOOR SHOWERS

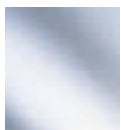
P-1500 CONTINUOUS HINGE FRAMELESS SWING DOOR ONLY



FEATURES & BENEFITS

- 3/16" standard thick tempered glass
- Pencil polished edges
- Continuous hinge
- 3" handle mounted on glass
- Heavy duty magnetic latch closing mechanism
- Includes assembly and dam strip
- All pivot doors must be measured for the width at the top & bottom
- Overall width includes aluminum
- Daylight opening is about 4 3/8" less than the overall width
- Component packages contain panels
- Available in custom glass sizes and textures
- List prices provided are for standard 3/16" thick glass in our most popular finishes including Chrome, Oil Rubbed Bronze, Brushed Nickel, Polished Brass and Matte Black
- Obscure and Narrow Reed available only in 66 5/8" and 69 5/8"

GLASS TEXTURES



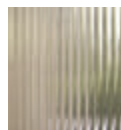
3/16" Clear



3/16" Obscure

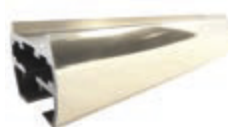


3/16" Rain

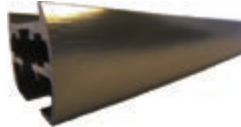


1/4" Narrow Reed

AVAILABLE COLORS



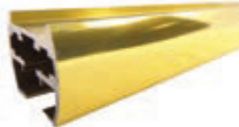
Polished Chrome



Oil Rubbed Bronze



Polished Brass



Matte Black

Pivot Door Handle



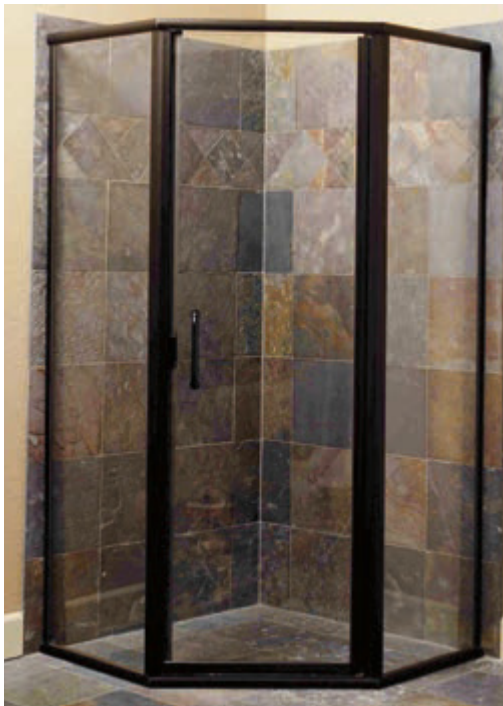
WIDTH & HEIGHT OPTIONS

<u>P-1500</u>	<u>Chrome</u>	<u>OB, BN, PB, MBL</u>	<u>P-1500</u>	<u>Chrome</u>	<u>OB, BN, PB, MBL</u>	<u>P-1500</u>	<u>Chrome</u>	<u>OB, BN, PB, MBL</u>
<u>Width x Height</u>	<u>List Price</u>	<u>List Price</u>	<u>Width x Height</u>	<u>List Price</u>	<u>List Price</u>	<u>Width x Height</u>	<u>List Price</u>	<u>List Price</u>
20" - 24" x 66 5/8"	\$220	\$312	20" - 24" x 72 5/8"	\$275	\$390	20" - 24" x 77 5/8"	\$297	\$421
25" - 30" x 66 5/8"	\$250	\$355	25" - 30" x 72 5/8"	\$313	\$444	25" - 30" x 77 5/8"	\$338	\$479
31" - 34" x 66 5/8"	\$270	\$383	31" - 34" x 72 5/8"	\$338	\$479	31" - 34" x 77 5/8"	\$365	\$517
35" - 36" x 66 5/8"	\$295	\$419	35" - 36" x 72 5/8"	\$369	\$524	35" - 36" x 77 5/8"	\$398	\$566
20" - 24" x 69 5/8"	\$253	\$359	20" - 24" x 75 5/8"	\$297	\$421			
25" - 30" x 69 5/8"	\$288	\$408	25" - 30" x 75 5/8"	\$338	\$479			
31" - 34" x 69 5/8"	\$311	\$440	31" - 34" x 75 5/8"	\$365	\$517			
35" - 36" x 69 5/8"	\$339	\$482	35" - 36" x 75 5/8"	\$398	\$566			

For component packages, this door will fit a 69", 72", 75", & 80" overall height.

For custom sized units, or units requiring specialty or non-stock glass, please contact customer service for pricing.

P-2000 EURO STYLE FRAMELESS SWING DOOR ONLY

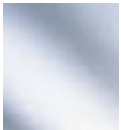


8" Back-to-Back Handle

FEATURES & BENEFITS

- Pencil polished edges
- 1/4" standard thick tempered glass
- Continuous hinge
- 8" euro style mounted handle with 3/4" diameter
- Handles are mounted back-to-back vertically, inside and outside of the unit
- Includes decorative metal washers
- Heavy duty magnetic latch closing mechanism
- Includes assembly and dam strip
- All pivot doors must be measured for the width at the top and bottom
- Overall width includes aluminum
- Daylight opening is about 4 3/8" less than the overall width
- Component packages contain panels
- Available in custom glass sizes and textures
- List prices provided are for standard 1/4" thick glass in our most popular finishes including Chrome, Oil Rubbed Bronze, Brushed Nickel, Polished Brass and Matte Black
- Narrow Reed available only in 66 5/8"

GLASS TEXTURES



1/4" Clear

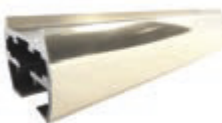


1/4" Rain



1/4" Narrow Reed

AVAILABLE COLORS



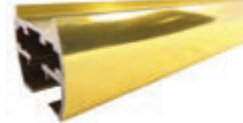
Polished Chrome



Oil Rubbed Bronze



Brushed Nickel



Polished Brass



Matte Black

WIDTH & HEIGHT OPTIONS

<u>P-2000</u>	<u>Chrome</u>	<u>OB, BN, PB, MBL</u>
<u>Width x Height</u>	<u>List Price</u>	<u>List Price</u>
20" - 24" x 66 5/8"	\$403	\$572
25" - 30" x 66 5/8"	\$436	\$619
31" - 34" x 66 5/8"	\$459	\$652
35" - 36" x 66 5/8"	\$470	\$667
20" - 24" x 69 5/8"	\$463	\$658
25" - 30" x 69 5/8"	\$501	\$712
31" - 34" x 69 5/8"	\$528	\$750
35" - 36" x 69 5/8"	\$541	\$767

<u>P-2000</u>	<u>Chrome</u>	<u>OB, BN, PB, MBL</u>
<u>Width x Height</u>	<u>List Price</u>	<u>List Price</u>
20" - 24" x 72 5/8"	\$504	\$715
25" - 30" x 72 5/8"	\$545	\$774
31" - 34" x 72 5/8"	\$574	\$815
35" - 36" x 72 5/8"	\$588	\$834
20" - 24" x 77 5/8"	\$544	\$772
25" - 30" x 77 5/8"	\$589	\$836
31" - 34" x 77 5/8"	\$620	\$880
35" - 36" x 77 5/8"	\$635	\$900

For component packages, this door will fit a 69", 72", 75", & 80" overall height.

For custom sized units, or units requiring specialty or non-stock glass, please contact customer service for pricing.

PIVOT & SWING DOOR SHOWERS

P-2500 EURO STYLE FRAMELESS SWING DOOR ONLY



Image features custom rain glass

GLASS TEXTURES



1/4" Clear

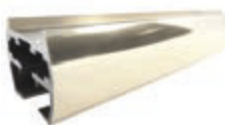


Combination Pull Handle w/
Towel Bar

FEATURES & BENEFITS

- 1/4" standard thick tempered glass
- Pencil polished edges
- Continuous hinge
- 3/4" diameter handle is 8" in length and 3/4" diameter towel bar
- Towel bar is mounted horizontally and the handle is mounted vertically
- Includes assembly and dam strip
- All pivot doors must be measured for the width at the top and bottom
- Overall width includes aluminum
- Daylight opening is about 4 3/8" less than the overall width
- Component packages contain panels
- Available in custom glass sizes and textures
- List prices provided are for standard 1/4" thick glass in our most popular finishes including Chrome, Oil Rubbed Bronze, Brushed Nickel, and Polished Brass

AVAILABLE COLORS



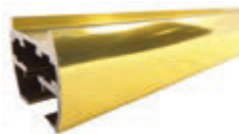
Polished Chrome



Oil Rubbed Bronze



Brushed Nickel



Polished Brass

WIDTH & HEIGHT OPTIONS

<u>P-2500</u>	<u>Chrome</u>	<u>Oil Rubbed Bronze</u>	<u>Brushed Nickel</u>	<u>Polished Brass</u>
<u>Width x Height</u>	<u>List Price</u>	<u>List Price</u>	<u>List Price</u>	<u>List Price</u>
20" - 24" x 66 5/8"	\$463	\$657	\$657	\$657
25" - 30" x 66 5/8"	\$496	\$704	\$704	\$704
31" - 34" x 66 5/8"	\$519	\$737	\$737	\$737
35" - 36" x 66 5/8"	\$530	\$753	\$753	\$753

For component packages, this door will fit within a 69" overall height.

For custom sized units, or units requiring specialty or non-stock glass, please contact customer service for pricing.

P-3000 CONTINUOUS HINGE FRAMED SWING DOOR ONLY



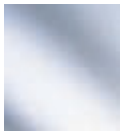
8" Back-to-Back Handle

FEATURES & BENEFITS

- 1/4" standard thick tempered glass
- Pencil polished edges
- Continuous hinge
- 3/4" diameter handle is 8" in length and mounted back-to-back vertically, inside and outside of the unit
- Handles include decorative metal washers
- Fully framed
- Includes assembly and dam strip
- All pivot doors must be measured for the width at the top and bottom
- Overall width includes aluminum
- Daylight opening is about 4 3/8" less than the overall width
- Component packages contain panels
- Available in custom glass sizes and textures
- List prices provided are for standard 1/4" thick glass in our most popular finishes including Chrome and Brushed Nickel
- Narrow Reed available only in 67 1/2"

Image shown includes panels

GLASS TEXTURES



1/4" Clear

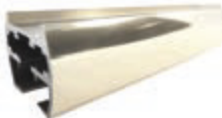


1/4" Rain



1/4" Narrow Reed

AVAILABLE COLORS



Polished Chrome



Brushed Nickel

WIDTH & HEIGHT OPTIONS

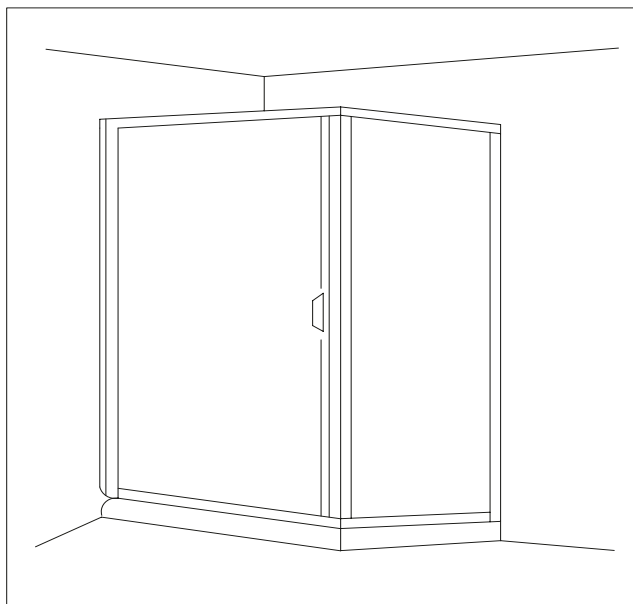
<u>P-3000</u>	<u>Chrome</u>	<u>Brushed Nickel</u>	<u>P-3000</u>	<u>Chrome</u>	<u>Brushed Nickel</u>
<u>Width x Height</u>	<u>List Price</u>	<u>List Price</u>	<u>Width x Height</u>	<u>List Price</u>	<u>List Price</u>
20" - 24" x 67 1/2"	\$275	\$391	20" - 24" x 73 1/2"	\$344	\$488
25" - 30" x 67 1/2"	\$305	\$433	25" - 30" x 73 1/2"	\$381	\$541
31" - 34" x 67 1/2"	\$325	\$462	31" - 34" x 73 1/2"	\$406	\$577
35" - 36" x 67 1/2"	\$350	\$497	35" - 36" x 73 1/2"	\$438	\$622
20" - 24" x 70 1/2"	\$316	\$449	20" - 24" x 78 1/2"	\$371	\$527
25" - 30" x 70 1/2"	\$351	\$498	25" - 30" x 78 1/2"	\$412	\$585
31" - 34" x 70 1/2"	\$374	\$531	31" - 34" x 78 1/2"	\$439	\$623
35" - 36" x 70 1/2"	\$403	\$572	35" - 36" x 78 1/2"	\$473	\$672

For component packages, this door will fit a 69 7/8", 72 7/8", and 80 7/8" overall height.

For custom sized units, or units requiring specialty or non-stock glass, please contact customer service for pricing.

PIVOT & SWING DOOR SHOWERS

PIVOT & SWING DOOR COMPONENTS – P-45 (2/3 NEO ANGLE)



FEATURES & BENEFITS

- P-45 (2/3 Neo Angle)
- 3/16" standard thick tempered glass
- 45 degree return panel
- Measurement describes the front of the unit (door width)
- These units can be ordered up to 80" in height
- This unit can take up to 36" door in width and up to a 36" panel in width (42" on a buttress) for standard pricing
- Anything that requires glass panels over 36" in width (or 42" on a buttress) will be charged as a custom unit
- List prices provided are for the component parts in our most popular finishes including Chrome, Brushed Nickel, Polished Brass and Matte Black
- Oil Rubbed Bronze available in frameless only
- To get a full unit price, the price of a door must be added
- Narrow Reed and Obscure available only in 69"

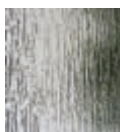
GLASS TEXTURES



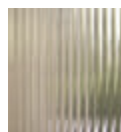
3/16" Clear



3/16" Obscure



3/16" Rain

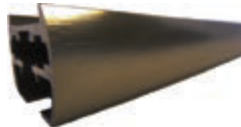


1/4" Narrow Reed

AVAILABLE COLORS



Polished Chrome



Oil Rubbed Bronze



Brushed Nickel



Polished Brass



Matte Black

WIDTH & HEIGHT OPTIONS

P-45 Pivot Door Components				P-45 Pivot Door Components			
Width x Height	Description	Chrome List Price	OB, BN, PB, MBL List Price	Width x Height	Description	Chrome List Price	OB, BN, PB, MBL List Price
36" x 69"	Frameless	\$243	\$345	36" x 75"	Frameless	\$303	\$431
36" x 69 7/8"	Framed	\$243	\$345 - No PB/ORB/MBL	36" x 75 7/8"	Framed	\$303	\$431 - No PB/ORB/MBL
36" x 69"	Frameless w/ Buttress	\$323	\$425	36" x 75"	Frameless w/ Buttress	\$383	\$511
36" x 69 7/8"	Framed w/ Buttress	\$323	\$425 - No PB/ORB/MBL	36" x 75 7/8"	Framed w/ Buttress	\$383	\$511 - No PB/ORB/MBL
36" x 72"	Frameless	\$279	\$397	36" x 80"	Frameless	\$328	\$466
36" x 72 7/8"	Framed	\$279	\$397 - No PB/ORB/MBL	36" x 80 7/8"	Framed	\$328	\$466 - No PB/ORB/MBL
36" x 72"	Frameless w/ Buttress	\$359	\$477	36" x 80"	Frameless w/ Buttress	\$408	\$546
36" x 72 7/8"	Framed w/ Buttress	\$359	\$477	36" x 80 7/8"	Framed w/ Buttress	\$408	\$546 - No PB/ORB/MBL

For custom sized units, or units requiring specialty or non-stock glass,
please contact customer service for pricing. - \$25.00 Net Charge per Notched Panel

PIVOT & SWING DOOR COMPONENTS – P-90



FEATURES & BENEFITS

- 3/16" standard thick tempered glass
- 90 degree return panel
- Measurement describes the front of the unit (door width)
- These units can be ordered up to 80" in height
- This unit can take up to 36" door in width and up to a 36" panel in width (42" on a buttress) for standard pricing
- Anything that requires glass panels over 36" in width (or 42" on a buttress) will be charged as a custom unit
- List prices provided are for the component parts in our most popular finishes including Chrome, Brushed Nickel, Polished Brass and Matte Black
- Oil Rubbed Bronze available in frameless only
- To get a full unit price, the price of a door must be added
- Narrow Reed and Obscure available only in 69"

GLASS TEXTURES



3/16" Clear



3/16" Obscure

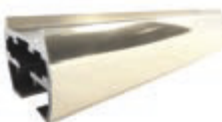


3/16" Rain



1/4" Narrow Reed

AVAILABLE COLORS



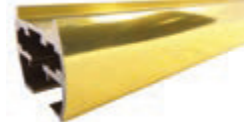
Polished Chrome



Oil Rubbed Bronze



Brushed Nickel



Polished Brass



Matte Black

WIDTH & HEIGHT OPTIONS

P-90 Pivot Door Components				P-90 Pivot Door Components			
Width x Height	Description	Chrome List Price	OB, BN, PB, MBL List Price	Width x Height	Description	Chrome List Price	OB, BN, PB, MBL List Price
36" x 69"	Frameless	\$225	\$320	36" x 75"	Frameless	\$281	\$400
36" x 69 7/8"	Framed	\$225	\$320 - No PB/ORB/MBL	36" x 75 7/8"	Framed	\$281	\$400 - No PB/ORB/MBL
36" x 69"	Frameless w/ Buttress	\$305	\$400	36" x 75"	Frameless w/ Buttress	\$361	\$480
36" x 69 7/8"	Framed w/ Buttress	\$305	\$400 - No PB/ORB/MBL	36" x 75 7/8"	Framed w/ Buttress	\$361	\$480 - No PB/ORB/MBL
36" x 72"	Frameless	\$259	\$368	36" x 80"	Frameless	\$304	\$432
36" x 72 7/8"	Framed	\$259	\$368 - No PB/ORB/MBL	36" x 80 7/8"	Framed	\$304	\$432 - No PB/ORB/MBL
36" x 72"	Frameless w/ Buttress	\$339	\$448	36" x 80"	Frameless w/ Buttress	\$384	\$512
36" x 72 7/8"	Framed w/ Buttress	\$339	\$448 - No PB/ORB/MBL	36" x 80 7/8"	Framed w/ Buttress	\$384	\$512 - No PB/ORB/MBL

For custom sized units, or units requiring specialty or non-stock glass,
please contact customer service for pricing. - \$25.00 Net Charge per Notched Panel

PIVOT & SWING DOOR SHOWERS

PIVOT & SWING DOOR COMPONENTS – P-90 I

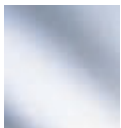


Image Shown:
P-90I w/ Buttress
with P-2000 Door

FEATURES & BENEFITS

- 3/16" standard thick tempered glass
- This unit has an in-line panel and a 90° return panel
- Measurement describes the front of the unit (door and in-line panel)
- These units can be ordered up to 80" in height
- This unit can take up to a 36" door in width and up to a 36" panel in width (42" on a buttress) for standard pricing
- Anything that requires glass panels over 36" in width (or 42" on a buttress) will be charged as a custom unit
- List prices provided are for the component parts in our most popular finishes including Polished Chrome, Brushed Nickel, Polished Brass and Matte Black
- Polished Brass, Oil Rubbed Bronze and Matte Black available in frameless only
- Narrow Reed and Obscure available in 69" only
- To get a full unit price, the price of a door must be added

GLASS TEXTURES



3/16" Clear



3/16" Obscure

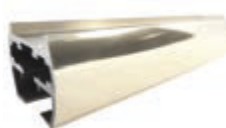


3/16" Rain



1/4" Narrow Reed

AVAILABLE COLORS



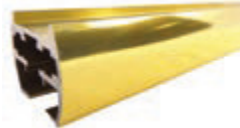
Polished Chrome



Oil Rubbed Bronze



Brushed Nickel



Polished Brass



Matte Black

WIDTH & HEIGHT OPTIONS

P-90I Pivot Door Components

Width x Height	Description	Chrome List Price	OB, BN, PB, MBL List Price
42" x 69"	Frameless	\$232	\$329
42" x 69 7/8"	Framed	\$232	\$329 - No PB/ORB/MBL
60" x 69"	Frameless	\$295	\$419
60" x 69 7/8"	Framed	\$295	\$419 - No PB/ORB/MBL
42" x 69"	Frameless w/ Buttress	\$312	\$409
42" x 69 7/8"	Framed w/ Buttress	\$312	\$409 - No PB/ORB/MBL
60" x 69"	Frameless w/ Buttress	\$375	\$499
60" x 69 7/8"	Framed w/ Buttress	\$375	\$499 - No PB/ORB/MBL
42" x 72"	Frameless	\$267	\$378
42" x 72 7/8"	Framed	\$267	\$378 - No PB/ORB/MBL
60" x 72"	Frameless	\$339	\$482
60" x 72 7/8"	Framed	\$339	\$482 - No PB/ORB/MBL
42" x 72"	Frameless w/ Buttress	\$347	\$458
42" x 72 7/8"	Framed w/ Buttress	\$347	\$458 - No PB/ORB/MBL
60" x 72"	Frameless w/ Buttress	\$419	\$562
60" x 72 7/8"	Framed w/ Buttress	\$419	\$562 - No PB/ORB/MBL

P-90I Pivot Door Components

Width x Height	Description	Chrome List Price	OB, BN, PB, MBL List Price
42" x 75"	Frameless	\$290	\$411
42" x 75 7/8"	Framed	\$290	\$411 - No PB/ORB/MBL
60" x 75"	Frameless	\$369	\$524
60" x 75 7/8"	Framed	\$369	\$524 - No PB/ORB/MBL
42" x 75"	Frameless w/ Buttress	\$370	\$491
42" x 75 7/8"	Framed w/ Buttress	\$370	\$491 - No PB/ORB/MBL
60" x 75"	Frameless w/ Buttress	\$449	\$604
60" x 75 7/8"	Framed w/ Buttress	\$449	\$604 - No PB/ORB/MBL
42" x 80"	Frameless	\$313	\$444
42" x 80 7/8"	Framed	\$313	\$444 - No PB/ORB/MBL
60" x 80"	Frameless	\$398	\$566
60" x 80 7/8"	Framed	\$398	\$566 - No PB/ORB/MBL
42" x 80"	Frameless w/ Buttress	\$398	\$524
42" x 80 7/8"	Framed w/ Buttress	\$398	\$524 - No PB/ORB/MBL
60" x 80"	Frameless w/ Buttress	\$478	\$646
60" x 80 7/8"	Framed w/ Buttress	\$478	\$646 - No PB/ORB/MBL

For custom sized units, or units requiring specialty or non-stock glass, please contact customer service for pricing.- \$25.00 Net Charge per Notched Panel

PIVOT & SWING DOOR COMPONENTS – P-135 (NEO ANGLE)



FEATURES & BENEFITS

- P-135 (Neo Angle)
- 3/16" standard thick tempered glass
- This unit has two 45 degree return panels
- Measurement describes the total length of both panels (45 degree panels)
- These units can be ordered up to 80" in height
- This unit can take up to 36" door in width, up to a 36" panel in width, and up to a 42" on buttress for standard pricing
- Anything that requires glass panels over 36" in width will be charged as a custom unit
- List prices provided are for the component parts in our most popular finishes including Chrome, Brushed Nickel, Polished Brass and Matte Black
- Oil Rubbed Bronze available in frameless only
- To get a full unit price, the price of a door must be added
- Narrow Reed and Obscure available only in 69"
- For custom sized units, or units requiring specialty or non-stock glass, please contact customer service for pricing - \$25.00 net charge per notched panel

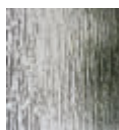
GLASS TEXTURES



3/16" Clear



3/16" Obscure

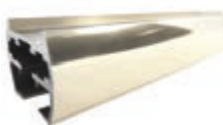


3/16" Rain



1/4" Narrow Reed

AVAILABLE COLORS



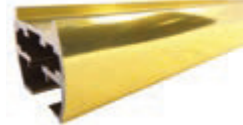
Polished Chrome



Oil Rubbed Bronze



Brushed Nickel



Polished Brass



Matte Black

WIDTH & HEIGHT OPTIONS

Width x Height	Description	Chrome List Price	OB, BN, PB, MBL List Price	Width x Height	Description	Chrome List Price	OB, BN, PB, MBL List Price
60" x 69"	Frameless	\$292	\$415	60" x 75"	Frameless	\$365	\$519
60" x 69 7/8"	Framed	\$292	\$415 - No PB/ORB/MBL	60" x 75 7/8"	Framed	\$365	\$519 - No PB/ORB/MBL
60" x 69"	Frameless w/ Buttress	\$372	\$495	60" x 75"	Frameless w/ Buttress	\$445	\$599
60" x 69 7/8"	Framed w/ Buttress	\$372	\$495 - No PB/ORB/MBL	60" x 75 7/8"	Framed w/ Buttress	\$445	\$599 - No PB/ORB/MBL
60" x 69"	Frameless w/ 2 Buttresses	\$452	\$575	60" x 75"	Frameless w/ 2 Buttresses	\$525	\$679
60" x 69 7/8"	Framed w/ 2 Buttresses	\$452	\$575 - No PB/ORB/MBL	60" x 75 7/8"	Framed w/ 2 Buttresses	\$525	\$679 - No PB/ORB/MBL
60" x 72"	Frameless	\$336	\$477	60" x 80"	Frameless	\$394	\$560
60" x 72 7/8"	Framed	\$336	\$477 - No PB/ORB/MBL	60" x 80 7/8"	Framed	\$394	\$560 - No PB/ORB/MBL
60" x 72"	Frameless w/ Buttress	\$416	\$557	60" x 80"	Frameless w/ Buttress	\$474	\$640
60" x 72 7/8"	Framed w/ Buttress	\$416	\$557 - No PB/ORB/MBL	60" x 80 7/8"	Framed w/ Buttress	\$474	\$640 - No PB/ORB/MBL
60" x 72"	Frameless w/ 2 Buttresses	\$496	\$637	60" x 80"	Frameless w/ 2 Buttresses	\$554	\$720
60" x 72 7/8"	Framed w/ 2 Buttresses	\$496	\$637 - No PB/ORB/MBL	60" x 80 7/8"	Framed w/ 2 Buttresses	\$554	\$720 - No PB/ORB/MBL

PIVOT & SWING DOOR SHOWERS

PIVOT & SWING DOOR COMPONENTS – P-180



FEATURES & BENEFITS

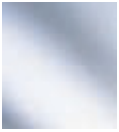
- 3/16" standard thick tempered glass
- This unit has an in-line panel
- Measurement describes the front of the unit (door and in-line panel)
- This unit can take up to 36" door in width, up to a 36" panel in width, and up to a 42" on a buttress for standard pricing
- Anything that requires glass panels over 36" in width will be charged as a custom unit
- List prices provided are for the component parts in our most popular finishes including Chrome, Polished Brass, Brushed Nickel and Matte Black
- Oil Rubbed Bronze available in frameless only
- To get a full unit price, the price of a door must be added
- Obscure and Narrow Reed only available in 69"

WIDTH & HEIGHT OPTIONS

Width x Height	Description	Chrome List Price	OB,BN,PB,MBL List Price
36" x 69"	Frameless	\$116	\$164
36" x 69 7/8"	Framed	\$116	\$164 - No PB/ORB/MBL
42" x 69"	Frameless	\$133	\$190
42" x 69 7/8"	Framed	\$133	\$190 - No PB/ORB/MBL
48" x 69"	Frameless	\$152	\$215
48" x 69 7/8"	Framed	\$152	\$215 - No PB/ORB/MBL
60" x 69"	Frameless	\$176	\$250
60" x 69 7/8"	Framed	\$176	\$250 - No PB/ORB/MBL
72" x 69"	Frameless	\$243	\$345
72" x 69 7/8"	Framed	\$243	\$345 - No PB/ORB/MBL
36" x 69"	Frameless w/ Buttress	\$196	\$244
36" x 69 7/8"	Framed w/ Buttress	\$196	\$244 - No PB/ORB/MBL
42" x 69"	Frameless w/ Buttress	\$213	\$270
42" x 69 7/8"	Framed w/ Buttress	\$213	\$270 - No PB/ORB/MBL
48" x 69"	Frameless w/ Buttress	\$232	\$295
48" x 69 7/8"	Framed w/ Buttress	\$232	\$295 - No PB/ORB/MBL
60" x 69"	Frameless w/ Buttress	\$256	\$330
60" x 69 7/8"	Framed w/ Buttress	\$256	\$330 - No PB/ORB/MBL
72" x 69"	Frameless w/ Buttress	\$323	\$425
72" x 69 7/8"	Framed w/ Buttress	\$323	\$425 - No PB/ORB/MBL

Width x Height	Description	Chrome List Price	OB, BN, PB, MBL List Price
36" x 72"	Frameless	\$134	\$189
36" x 72 7/8"	Framed	\$134	\$189 - No PB/ORB/MBL
42" x 72"	Frameless	\$153	\$218
42" x 72 7/8"	Framed	\$153	\$218 - No PB/ORB/MBL
48" x 72"	Frameless	\$175	\$247
48" x 72 7/8"	Framed	\$175	\$247 - No PB/ORB/MBL
60" x 72"	Frameless	\$202	\$287
60" x 72 7/8"	Framed	\$202	\$287 - No PB/ORB/MBL
72" x 72"	Frameless	\$279	\$397
72" x 72 7/8"	Framed	\$279	\$397 - No PB/ORB/MBL
36" x 72"	Frameless w/ Buttress	\$214	\$269
36" x 72 7/8"	Framed w/ Buttress	\$214	\$269 - No PB/ORB/MBL
42" x 72"	Frameless w/ Buttress	\$233	\$298
42" x 72 7/8"	Framed w/ Buttress	\$233	\$298 - No PB/ORB/MBL
48" x 72"	Frameless w/ Buttress	\$255	\$327
48" x 72 7/8"	Framed w/ Buttress	\$255	\$327 - No PB/ORB/MBL
60" x 72"	Frameless w/ Buttress	\$282	\$367
60" x 72 7/8"	Framed w/ Buttress	\$282	\$367 - No PB/ORB/MBL
72" x 72"	Frameless w/ Buttress	\$359	\$477
72" x 72 7/8"	Framed w/ Buttress	\$359	\$477 - No PB/ORB/MBL

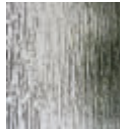
GLASS TEXTURES



3/16" Clear



3/16" Obscure



3/16" Rain



1/4" Narrow Reed

AVAILABLE COLORS



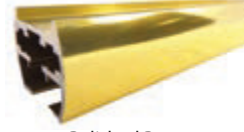
Polished Chrome



Oil Rubbed Bronze



Brushed Nickel



Polished Brass



Matte Black

Width x Height		Description	Chrome List Price	OB,BN,PB,MBL List Price
36"	x 75"	Frameless	\$145	\$206
36"	x 75 7/8"	Framed	\$145	\$206 - No PB/ORB/MBL
42"	x 75"	Frameless	\$167	\$237
42"	x 75 7/8"	Framed	\$167	\$237 - No PB/ORB/MBL
48"	x 75"	Frameless	\$190	\$269
48"	x 75 7/8"	Framed	\$190	\$269 - No PB/ORB/MBL
60"	x 75"	Frameless	\$220	\$312
60"	x 75 7/8"	Framed	\$220	\$312 - No PB/ORB/MBL
72"	x 75"	Frameless	\$303	\$431
72"	x 75 7/8"	Framed	\$303	\$431 - No PB/ORB/MBL
36"	x 75"	Frameless w/ Buttress	\$225	\$286
36"	x 75 7/8"	Framed w/ Buttress	\$225	\$286 - No PB/ORB/MBL
42"	x 75"	Frameless w/ Buttress	\$247	\$317
42"	x 75 7/8"	Framed w/ Buttress	\$247	\$317 - No PB/ORB/MBL
48"	x 75"	Frameless w/ Buttress	\$270	\$349
48"	x 75 7/8"	Framed w/ Buttress	\$270	\$349 - No PB/ORB/MBL
60"	x 75"	Frameless w/ Buttress	\$300	\$392
60"	x 75 7/8"	Framed w/ Buttress	\$300	\$392 - No PB/ORB/MBL
72"	x 75"	Frameless w/ Buttress	\$383	\$511
72"	x 75 7/8"	Framed w/ Buttress	\$383	\$511 - No PB/ORB/MBL

Width x Height		Description	Chrome List Price	OB,BN,PB,MBL List Price
36"	x 80"	Frameless	\$157	\$222
36"	x 80 7/8"	Framed	\$157	\$222 - No PB/ORB/MBL
42"	x 80"	Frameless	\$180	\$256
42"	x 80 7/8"	Framed	\$180	\$256 - No PB/ORB/MBL
48"	x 80"	Frameless	\$205	\$290
48"	x 80 7/8"	Framed	\$205	\$290 - No PB/ORB/MBL
60"	x 80"	Frameless	\$238	\$337
60"	x 80 7/8"	Framed	\$238	\$337 - No PB/ORB/MBL
72"	x 80"	Frameless	\$328	\$466
72"	x 80 7/8"	Framed	\$328	\$466 - No PB/ORB/MBL
36"	x 80"	Frameless w/ Buttress	\$237	\$302
36"	x 80 7/8"	Framed w/ Buttress	\$237	\$302 - No PB/ORB/MBL
42"	x 80"	Frameless w/ Buttress	\$260	\$336
42"	x 80 7/8"	Framed w/ Buttress	\$260	\$336 - No PB/ORB/MBL
48"	x 80"	Frameless w/ Buttress	\$285	\$370
48"	x 80 7/8"	Framed w/ Buttress	\$285	\$370 - No PB/ORB/MBL
60"	x 80"	Frameless w/ Buttress	\$318	\$417
60"	x 80 7/8"	Framed w/ Buttress	\$318	\$417 - No PB/ORB/MBL
72"	x 80"	Frameless w/ Buttress	\$408	\$546
72"	x 80 7/8"	Framed w/ Buttress	\$408	\$546 - No PB/ORB/MBL

For custom sized units, or units requiring specialty or non-stock glass,
please contact customer service for pricing. - \$25.00 Net Charge per Notched Panel

HEAVY GLASS UNITS

HEAVY GLASS FEATURES

Wardrobe & Bath Specialties stocks over 1,000 sizes of 3/8" glass and a wide range of doors and panels to choose from. We can create standard or custom configurations that capture the latest design trends. Our skilled customer service team is trained to supply custom glass patterns and types upon request. We manufacture and carry a variety of finishes along with custom parts as requested. All of our stock sizes may be viewed and purchased by visiting our website, or simply contact customer service. We are dedicated to providing all of our customers with quality products at a competitive price.

HEAVIES AT-A-GLANCE

INVENTORY

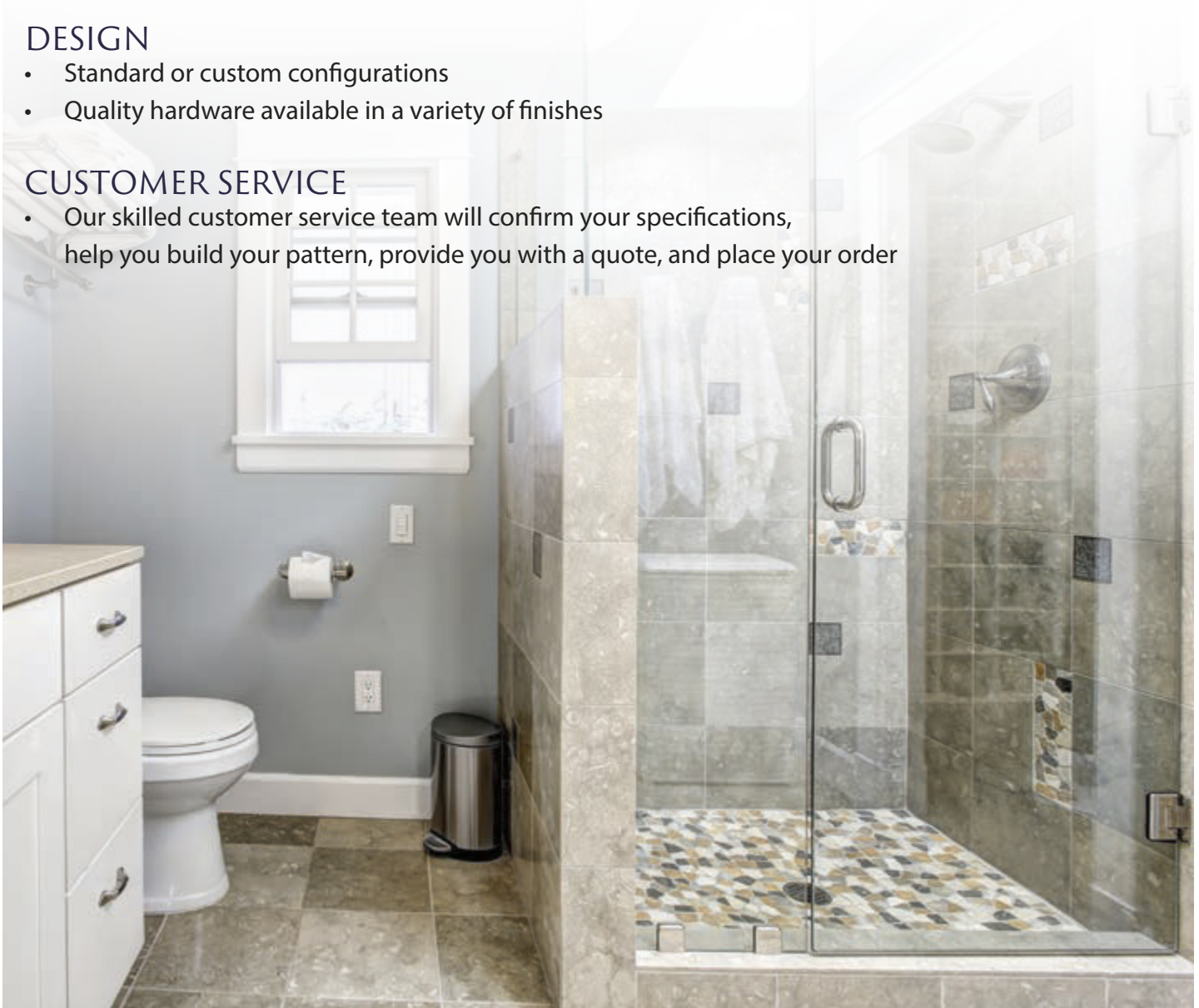
- Over 1,000 sizes in stock in 3/8" glass including a wide range of doors & panels

DESIGN

- Standard or custom configurations
- Quality hardware available in a variety of finishes

CUSTOMER SERVICE

- Our skilled customer service team will confirm your specifications, help you build your pattern, provide you with a quote, and place your order



HEAVY GLASS FEATURES



STANDARD GLASS TEXTURES



3/8" Clear



1/2" Clear



3/8" Rain

AVAILABLE COLORS



Polished Brass
(PB)



Polished Chrome
(PC)



Brushed Nickel
(BN)



Oil Rubbed Bronze
(OB)



Antique Brass
(AB)



Polished Nickel
(PN)



Satin Nickel
(SN)



Matte Black
(MLB)

FEATURES & BENEFITS

- 3/8" standard thick tempered glass
- Flat polished edges
- Doors are fabricated with two 3" hinge cut-outs and two vertical 1/2" holes for an 8" handle
- Two 50lb. capacity hinges
- 8" euro style handles mounted inside and out
- Customize your unit with a choice of metal finishes
- Additional glass thicknesses and textures as well as custom parts or finishes available upon request, contact customer service for any questions, pricing, or additional information



HEAVY GLASS UNITS

HEAVY GLASS CONFIGURATIONS

H-90I



H-90I Featuring Chrome Fixtures



Bath Screen Installed by Don's Mobile Glass



H-135 Image Provided by VDM Glass



H-90I Image Provided by Don's Mobile Glass



HEAVY GLASS CONFIGURATIONS

H-135



H-135 Custom Steam Unit, Image Provided by VDM Glass



H-90I



H-90I Featuring Chipped Top



H-135



HEAVY GLASS UNITS

THE 6000 SERIES - 1/2" GLASS FRAMELESS SLIDING SHOWER DOOR

- The WBS 6000 Series is a frameless sliding door with one stationery panel for a 180° installation
- It features anti-jump gliding and precision rollers
- The 6000 has no header and utilizes a top-mounted center guide, 2 adjustable bottom rollers, 2 wall mount brackets, a bottom track and 5/8" u-channel
- The 6000 Series was designed by WBS using years of research and development to secure the highest quality materials were used including a handle that is specifically made for 1/2" glass
- Available in PC, BN, & OB and all component parts are included



THE 6000 SERIES - AT-A-GLANCE

NO HEADER

- The 6000 features a frameless look
- Uses a single top mount center guide

1/2" GLASS - 180° ONLY

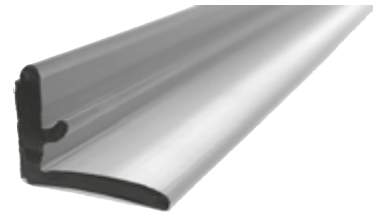
- The 6000 is designed for heavy 1/2" glass
- Use for 180° openings only

A HANDLE UNIQUE TO WBS

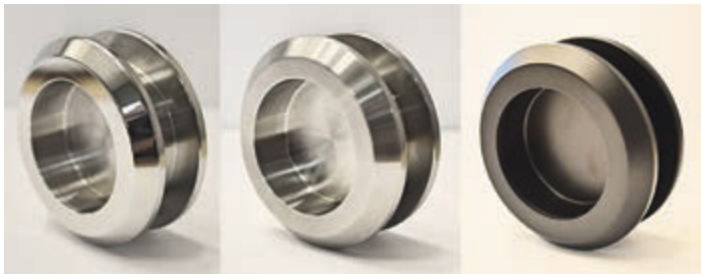
- A handle designed & manufactured by WBS

ALL COMPONENT PARTS ARE INCLUDED

- 2 adjustable bottom rollers
- 2 wall mount brackets
- Center guide
- Bottom track
- 5/8" u-channel
- Handle designed for 1/2" glass, exclusively manufactured by WBS
- L-Jamb Polycarbonate with adhesive
- Available in polished chrome, brushed nickel, and oil rubbed bronze
- Bottom rolling unit with one stationary panel
- Bottom track glued with VHB tape
- Guide rides on the door
- Fillers available for uneven surface



L-Jamb Polycarbonate with adhesive back



6000 Series Handle
Unique to WBS



6000 Series Adjustable Bottom Roller
2 rollers included



6000 Series Center Guide
Mounted to the top



6000 Series Wall Mount Brackets
2 brackets included

HEAVY GLASS UNITS

THE 7000 SERIES - 3/8" GLASS BARNDOOR SLIDER

- The New WBS 7000 Series is a Barndoor Style Slider available in dual or single slide
- Used for a 180° installation
- It features anti-jump gliding and precision rollers
- The 7000 Series was designed by WBS to satisfy the modern, Barndoor look that our customers want
- The 7000 Series is sold as a complete unit with all components and 3/8" glass
- Available in polished chrome and brushed nickel



THE 7000 SERIES - AT-A-GLANCE

ALL COMPONENT PARTS INCLUDED

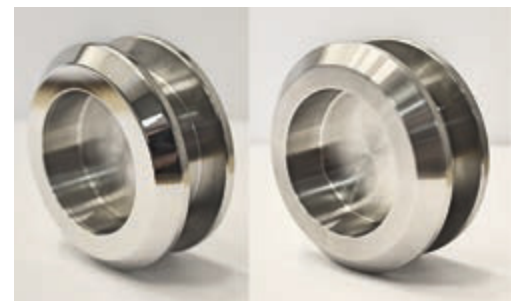
- Barndoor frameless look with top-rollers
- Dual & Single Slide
- Stainless steel hardware
- Only approx. 5/8" gap between the glass
- Handle designed for 3/8" glass, exclusively manufactured by WBS
- L-Jamb Polycarbonate with adhesive back
- Available in polished chrome and brushed nickel



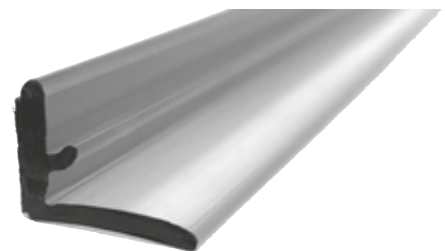
7000 Series Top Rollers



7000 Series Wall Mount Bracket



7000 Series Handle



L-Jamb Polycarbonate with adhesive back

STANDARD HINGES

- All WBS Standard Hinges have a 40lb capacity per hinge & a closing position of (0°)
- Hinges are made of solid brass and come in a variety of finishes including (PC, BN, OB, AB, PN, SN, PB)
- Hinge swings 90 degrees in and 90 degrees out
- Self-centering when within 15 degrees of closed position
- Requires cut-outs in glass
- Includes gaskets, screws, and glass fabrication template
- Reversible pin with 5 degrees offset option on all hinges

SHORT PLATE

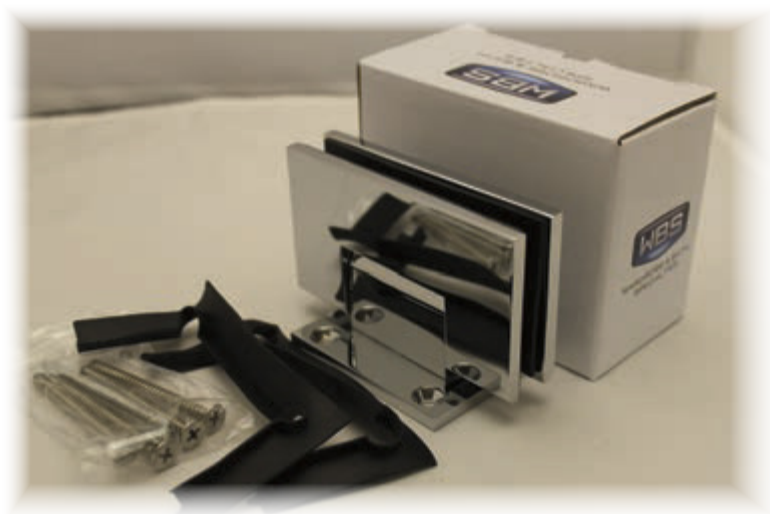
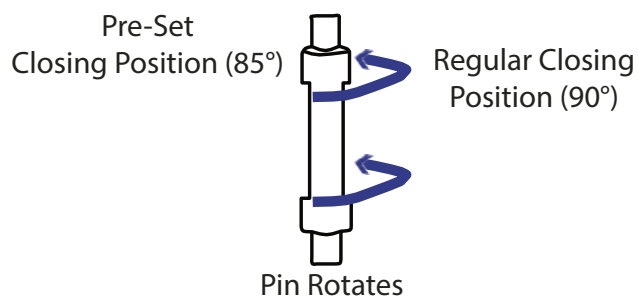
- Glass-to-wall installation
- Allows for flexibility in the adjustment of the glass all the way to the wall

FULL PLATE

- Allows for more space between screw holes maximizing door width

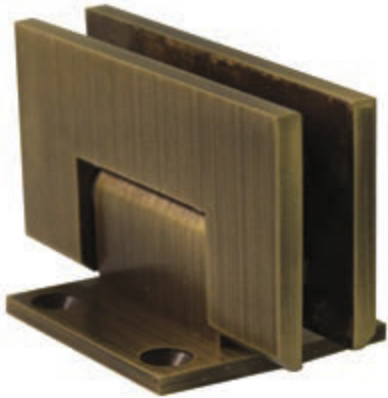
OFFSET PLATE

- Plate mounted flush with front of glass
- Majority of plate is inside the shower

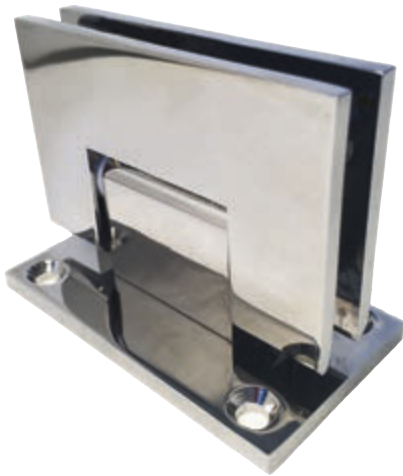


FOR HINGE:	MAXIMUM DOOR CAPACITY	FOR 3/8" (10 MM)		FOR 1/2" (12 MM)	
Short Plate	-	Door Weight	Door Width	Door Weight	Door Width
	2 Hinges	80 lbs (36 kg)	28" (711 mm)	80 lbs (36 kg)	28" (711 mm)
FOR HINGE:	MAXIMUM DOOR CAPACITY	FOR 3/8" (10 MM)		FOR 1/2" (12 MM)	
Full Plate	2 Hinges	80 lbs (36 kg)	28" (711 mm)	80 lbs (36 kg)	28" (711 mm)
	3 Hinges	Do Not Use for these hinges			
FOR HINGE:	MAXIMUM DOOR CAPACITY	FOR 3/8" (10 MM)		FOR 1/2" (12 MM)	
Offset Plate	-	Door Weight	Door Width	Door Weight	Door Width
	2 Hinges	80 lbs (36 kg)	28" (711 mm)	80 lbs (36 kg)	28" (711 mm)

LAGUNA



Laguna Standard w/ Short Plate
Antique Brass
HG-LA-SP



Laguna Standard w/ Full Plate
Polished Chrome
HG-LA-FP



Laguna Standard w/ Offset Plate
Oil Rubbed Bronze
HG-LA-OP

MARINA



Marina Standard w/ Short Plate
Polished Nickel
HG-MA-SP



Marina Standard w/ Full Plate
Brushed Nickel
HG-MA-FP



Marina Standard w/ Offset Plate
Satin Nickel
HG-MA-OP

HEAVY HINGES

- All WBS Heavy Hinges have a 50lb capacity per hinge & a closing position of (0°)
- Hinges are made of solid brass and come in a variety of finishes including (PC, BN, OB, AB, PN, SN, PB)
- Hinge swings 90 degrees in and 90 degrees out
- Self-centering when within 15 degrees of closed position
- Requires mouse ear cut-outs or square cut-outs in the glass (remove pins to fit square cut-outs)
- Includes gaskets, screws, and glass fabrication template
- Reversible pin with 5 degrees offset option on all hinges

SHORT PLATE

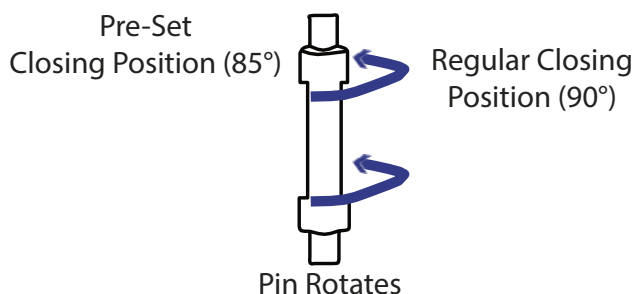
- Glass-to-wall installation
- Allows for flexibility in the adjustment of the glass all the way to the wall

FULL PLATE

- Allows for more space between screw holes maximizing door width

OFFSET PLATE

- Plate mounted flush with front of glass
- Majority of plate is inside the shower



FOR HINGE:	MAXIMUM DOOR CAPACITY	FOR 3/8" (10 MM)		FOR 1/2" (12 MM)	
Short Plate	-	Door Weight	Door Width	Door Weight	Door Width
	2 Hinges	100 lbs (45 kg)	34" (864 mm)	100 lbs (45 kg)	32" (813 mm)
FOR HINGE:	MAXIMUM DOOR CAPACITY	FOR 3/8" (10 MM)		FOR 1/2" (12 MM)	
Full Plate	2 Hinges	110 lbs (50 kg)	36" (914 mm)	110 lbs (50 kg)	36" (914 mm)
	3 Hinges	Do Not Use for these hinges			
FOR HINGE:	MAXIMUM DOOR CAPACITY	FOR 3/8" (10 MM)		FOR 1/2" (12 MM)	
Offset Plate	-	Door Weight	Door Width	Door Weight	Door Width
	2 Hinges	100 lbs (45 kg)	34" (864 mm)	100 lbs (45 kg)	32" (813 mm)

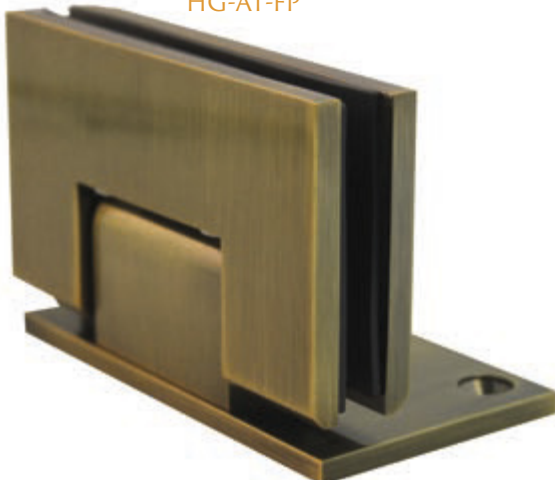
ATLANTIC



Atlantic Heavy w/ Short Plate
Polished Brass
HG-AT-SP



Atlantic Heavy w/ Full Plate
Satin Nickel
HG-AT-FP



Atlantic Heavy w/ Offset Plate
Antique Brass
HG-AT-OP

PACIFIC



Pacific Heavy w/ Short Plate
Antique Brass
HG-PA-SP



Pacific Heavy w/ Full Plate
Polished Nickel
HG-PA-FP



Pacific Heavy w/ Offset Plate
Satin Nickel
HG-PA-OP

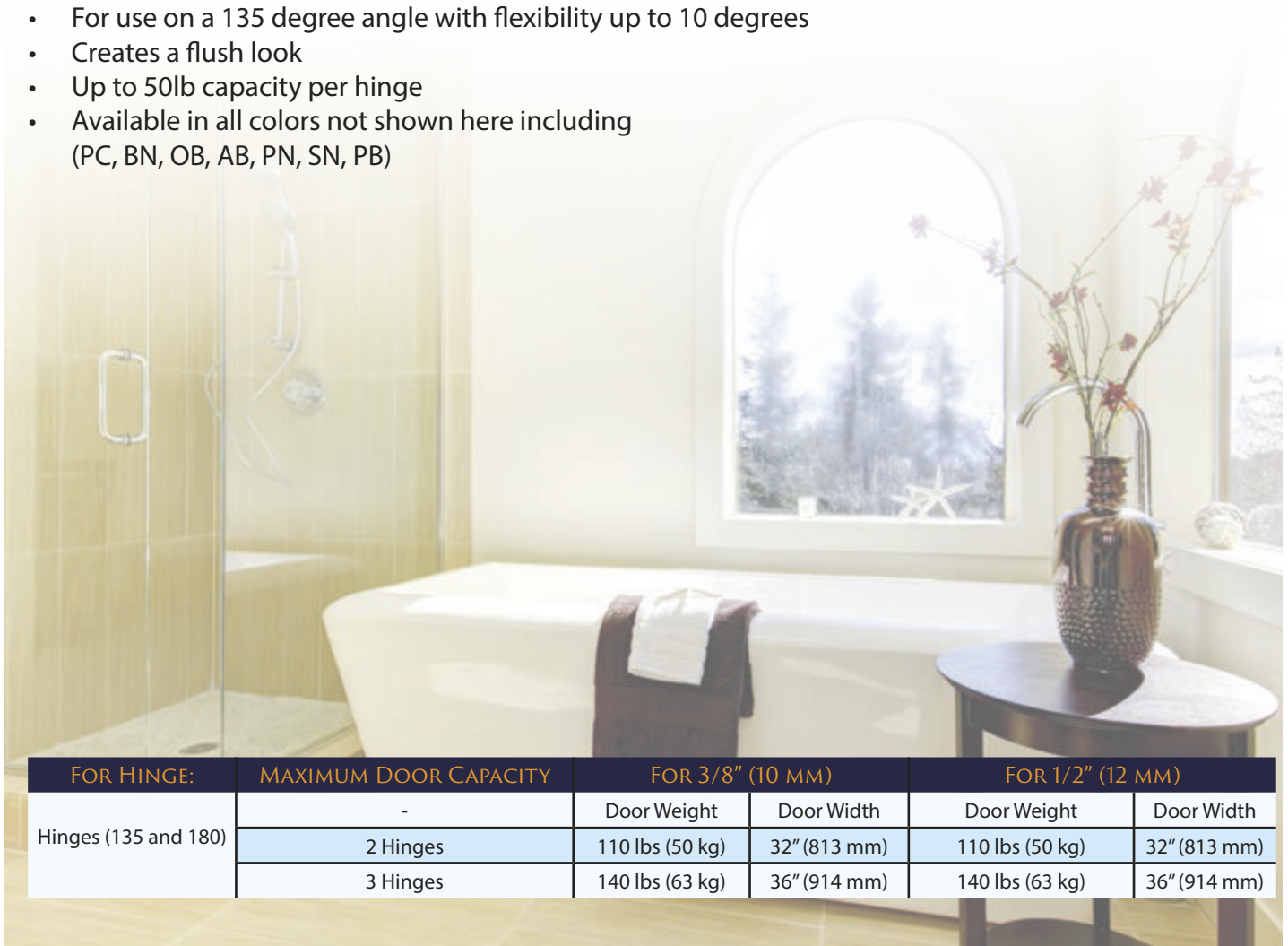
ADJUSTABLE HEAVY W/ SHORT PLATE

- The adjustable heavy w/ short plate is unique to WBS
- Hinges have a 50lb capacity per hinge & a closing position of (0°)
- Hinges are made of solid brass and come in a variety of finishes including (PC, BN, OB, AB, PN, SN, PB, and MBL)
- For use on a 90 degree angle with flexibility from 0 to 90 degrees
- Creates a flush look
- Hinge swings 90 degrees in and 90 degrees out
- Self-centering when within 15 degrees of closed position
- Requires rabbit ear cut-outs or square cut-outs in the glass (remove pins to fit square cut-outs)
- Includes gaskets, screws, and glass fabrication template
- Reversible pin with 5 degrees offset option on all hinges

FOR HINGE:	MAXIMUM DOOR CAPACITY	FOR 3/8" (10 MM)		FOR 1/2" (12 MM)	
Adjustable w/ Short Plate	-	Door Weight	Door Width	Door Weight	Door Width
	2 Hinges	100 lbs (45 kg)	34" (864 mm)	100 lbs (45 kg)	32" (813 mm)

135 & 180 ATLANTIC AND PACIFIC HINGES

- For use on a 135 degree angle with flexibility up to 10 degrees
- Creates a flush look
- Up to 50lb capacity per hinge
- Available in all colors not shown here including (PC, BN, OB, AB, PN, SN, PB)



FOR HINGE:	MAXIMUM DOOR CAPACITY	FOR 3/8" (10 MM)		FOR 1/2" (12 MM)	
Hinges (135 and 180)	-	Door Weight	Door Width	Door Weight	Door Width
	2 Hinges	110 lbs (50 kg)	32" (813 mm)	110 lbs (50 kg)	32" (813 mm)
	3 Hinges	140 lbs (63 kg)	36" (914 mm)	140 lbs (63 kg)	36" (914 mm)

ATLANTIC



Atlantic Adjustable Heavy w/ Short Plate
Matte Black
HG-AT-MBL

PACIFIC



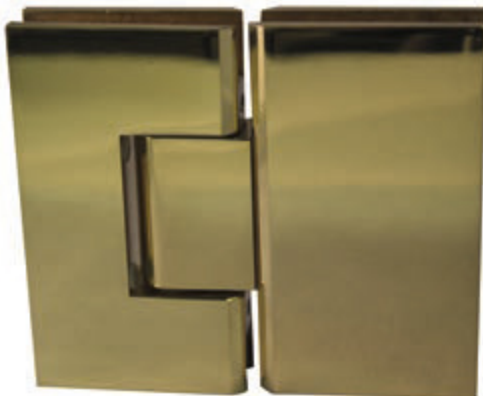
Pacific Adjustable Heavy w/ Short Plate
Polished Nickel
HG-PA-ASP



Atlantic 135 Heavy Duty Hinge
Antique Brass
HG-AT-135



Pacific 135 Heavy Duty Hinge
Brushed Nickel
HG-PA-135



Atlantic 180 Heavy Duty Hinge
Polished Brass
HG-AT-180



Pacific 180 Heavy Duty Hinge
Polished Chrome
HG-PA-180

WBS EZ HINGE & BAYVIEW PIVOT HINGE

WBS EZ HINGE APPLICATION

- WBS EZ Hinge for use on a heavy glass pivot door configuration with the support of a header
- No drilling required and significantly reduces install time
- For use at the top of door only
- For bottom, use in combination with Bayview Pivot Hinge
- EZ Hinge and EZ Header Insert purchased separately
- Comes with EZ Hinge Insert
- Available in 3 colors (PC, OB, BN)



EZ Hinge
Brushed Nickel
HG-EZ



BAYVIEW PIVOT HINGE APPLICATION

- Bayview Pivot Hinges are made of solid brass and feature beveled edges
- Hinge swings in full rotation and is self-centering when within 15 degrees of closed position
- Requires cut-outs in glass
- Includes gaskets, screws, two anchors, and glass fabrication template
- Available in all colors not shown here including (PC, BN, OB, AB, PN, SN, PB)
- For bottom only



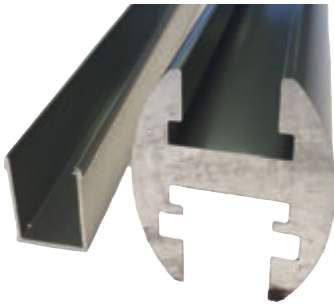
Bayview Hinge
Polished Chrome
HG-BV

MAXIMUM DOOR CAPACITY	FOR 3/8" (10 mm)	
	Door Weight	Door Width
2 Pivot Hinges	100 lbs (45 kg)	31" (787 mm)

* Note: Do not exceed maximum door weight or width.

HEADER KIT

- For glass thickness 5/16" (8 mm) to 1/2" (12 mm)
- Snap-in filler insert and glazing vinyl for door pocket included
- Available in all colors not shown here including (PC, BN, OB)



EZ Header with Insert
HK-EZ



3/8" WBS EZ-Header Glazing Vinyl
VL-EHG

BRACKETS FOR USE WITH EZ HEADER KIT



135 Corner Bracket
Polished Brass
BR-135



Wall Mount Bracket
Polished Brass
BR-WM



90 Corner Bracket
Polished Brass
BR-90

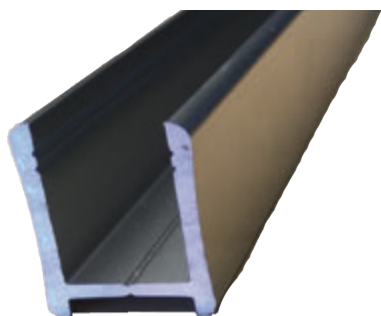


Adjustable Header Bracket
Polished Brass
BR-AH

U-CHANNELS, J-MOLDS & L-BAR

U-CHANNELS

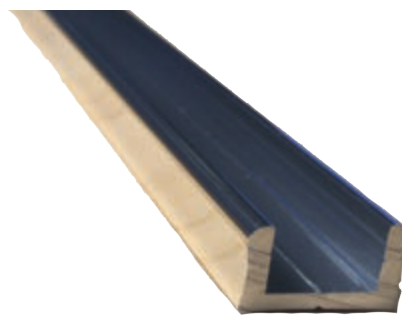
- For glass thickness 3/8" (10 mm) and 1/2" (12 mm)
- Available in all colors not shown here including (PC, BN, OB, AB, PN, SN, PB)*
- The 3/8" medium is available in PC and BN only*



3/8" High
UC-38HP



3/8" Medium
(only in 3/8")
UC-38MP



3/8" Low
UC-38LP

J-MOLDS & L-BAR

- For glass 3/16" and 1/4" mirror
- Available in 12' 4"
- J-Mold available in PC, BN, OB, and PB
- L-Bar available in PC



3/8" J-Mold
JM-38



5/8" J-Mold
JM-58



3/16 or 1/4" L-Bar
LB-CH

VINYL

- Clear glazing vinyl secures glass inside the WBS EZ-Header
- Stock length is 108" (2.74 m)



3/8" WBS EZ-Header Glazing Vinyl
VL-EHG

SETTING BLOCKS

- Clear setting blocks are used for leveling fixed glass panels
- All Setting Blocks come in bags of 100 pieces
- Available in 1/8" (3 mm) x 1/4" (6 mm) x 2" (51 mm)



1/8" x 1/4" Setting Block
ST-18

CREEKSID NOTCHED CLIPS

- Creekside notched clips are made of solid brass and feature squared edges
- For glass thickness 3/8" (10 mm) to 1/2" (12 mm)
- Requires 3/4" (19 mm) hole or notch in glass
- All WBS notched clips generally have thicker plates than most competitors
- Includes gaskets, mounting screws, and allen wrench
- Available in all colors not shown here including (PC, BN, OB, AB, PN, SN, and PB)
- Wall mount clip also available in matte black

DIMENSIONS FOR CLIPS	WIDTH	HEIGHT
Wall Mount Clip	2" (51 mm)	2" (51 mm)
135 Clip	2" (51 mm) (each leg)	2" (51 mm)
180 Clip	4" (102 mm)	2" (51 mm)
90 Clip	2" (51 mm) (each leg)	2" (51 mm)



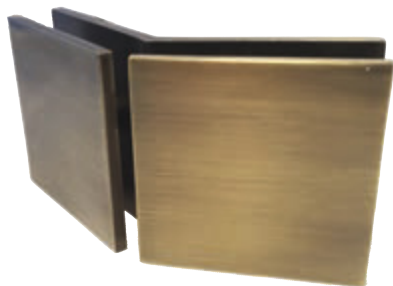
Creekside 90 Top View



Creekside Wall Mount Clip
Brushed Nickel
CP-CS-WM



Creekside 180 Notched Clip
Brushed Nickel
CP-CS-180



Creekside 135 Clip
Antique Brass
CP-CS-135



Creekside 90 Clip
Oil Rubbed Bronze
CP-CS-90

SEAHAVEN NOTCHED CLIPS

- Seahaven notched clips are made of solid brass and feature beveled edges
- For glass thickness 3/8" (10 mm) to 1/2" (12 mm)
- Requires 3/4" (19 mm) hole or notch in glass
- All WBS notched clips generally have thicker plates than most competitors
- Includes gaskets, mounting screws, and allen wrench
- Available in all colors not shown here including (PC, BN, OB, AB, PN, SN, PB)
- Wall mount clip also available in matte black

DIMENSIONS FOR CLIPS	WIDTH	HEIGHT
Wall Mount Clip	2" (51 mm)	2" (51 mm)
135 Clip	2" (51 mm) (each leg)	2" (51 mm)
180 Clip	4" (102 mm)	2" (51 mm)
90 Clip	2" (51 mm) (each leg)	2" (51 mm)



Seahaven Wall Mount Clip
Antique Brass
CP-SH-WM



Seahaven 180 Notched Clip
Antique Brass
CP-SH-180



Seahaven 135 Clip
Polished Nickel
CP-SH-135



Seahaven 90 Clip
Brushed Nickel
CP-SH-90

TRANSOM CLIPS

- Transom clips are made of solid brass
- For glass thickness 3/8" (10 mm) to 1/2" (12 mm)
- Requires 3/4" (19 mm) hole or notch in glass
- Maximum 30" in width and 16" in height
- All WBS notched clips generally have thicker plates than most competitors
- Includes gaskets, mounting screws, and allen wrench
- Available in all colors not shown here including (PC, BN, OB, AB, PN, SN, PB)



Lakeport Wall Mount Clip
Oil Rubbed Bronze
CP-LP-WM



Lakeport 180 Clip
Satin Nickel
CP-LP-180



Shoreline Wall Mount Clip
Antique Brass
CP-SL-WM



Shoreline 180 Clip
Polished Chrome
CP-SL-180

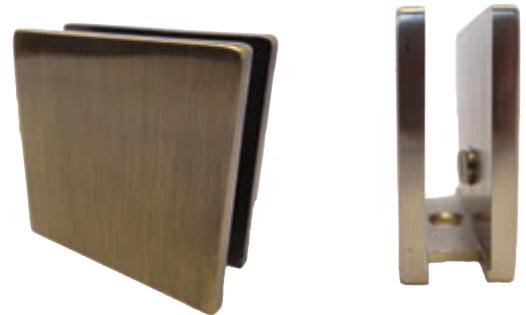
DIMENSIONS FOR CLIPS	WIDTH	HEIGHT
Wall Mount Clip	2" (51 mm)	2" (51 mm)
180 Clip	4" (102 mm)	2" (51 mm)

NOTCHLESS COMPRESSION CLIPS

- Notchless compression clips are made of stainless steel
- Compression clips do not require cut-outs in the glass and can be placed anywhere
- Extremely durable
- Available in all colors not shown here including (PC, BN, OB, AB, PN, SN, PB)
- For 3/8" glass only



Beveled Edge Notchless Clip
Polished Chrome
C-CBGTW



Squared Edge Notchless Clip
Antique Brass
C-CGTW

WBS PRESIDIO SINGLE MOUNT KNOBS

- For glass thickness 3/16" (4.8 mm) to 1/2" (12 mm)
- Presidio Series requires 7/8" (22 mm) hole diameter to secure through the glass
- Includes plastic washers to protect against glass-to-metal contact
- Presidio Series includes finger pull end caps for easier inside pull & is unique to WBS
- Available in 4 colors (PB, PC, BN, and OB)
- Standard on 2000 and 5000 bypass series units



Polished Brass
KB-PR-PB



Polished Chrome
KB-PR-PC



Oil Rubbed Bronze
KB-PR-OB



Brushed Nickel
KB-PR-BN



Matte Black
KB-PR-MBL



Presidio Single Mount Knob
Pioneered Exclusively by WBS

ADAPTER KITS

- For use in combination only with Presidio Single Mount Knob & Presidio Single Mount Towel Bar



Polished Brass
TB-AD-PB



Polished Chrome
TB-AD-PC



Oil Rubbed Bronze
TB-AD-OB



Brushed Nickel
TB-AD-BN



Matte Black
TB-AD-MBL



Presidio Single Mount Towel Bar

SINGLE MOUNT KNOBS

- For glass thickness 3/16" (4.8 mm) to 1/2" (12 mm)
- Requires 1/2" (12 mm) hole diameter to secure through the glass
- Includes plastic washers to protect against glass-to-metal contact
- Available in all colors not shown here including (PC, BN, OB, AB, PN, SN, PB)
- Carmel only available in 4 colors (PB, PC, BN, and OB)



Petaluma Single Mount
Polished Chrome
KB-PE-SM



Calistoga Single Mount
Polished Brass
KB-CA-SM



Saratoga Single Mount
Satin Nickel
KB-SA-SM



Carmel Single Mount
Oil Rubbed Bronze
KB-CR-SM



Silverado Single Mount
Antique Brass
KB-SV-SM

BACK-TO-BACK KNOBS

- For glass thickness 3/16" (4.8 mm) to 1/2" (12 mm)
- Requires 1/2" (12 mm) hole diameter to secure through the glass
- Includes plastic washers to protect against glass-to-metal contact
- Available in all colors not shown here including (PC, BN, OB, AB, PN, SN, PB)



Calistoga Back-to-Back
Oil Rubbed Bronze
KB-CA-BTB



Saratoga Back-to-Back
Polished Brass
KB-SA-BTB



Silverado Back-to-Back
Brushed Nickel
KB-SV-BTB



Petaluma Back-to-Back
Polished Nickel
KB-PE-BTB

BACK-TO-BACK PULL HANDLES

- 3/4" (19 mm) diameter handles
- For glass thickness 1/4" (6 mm) to 1/2" (12 mm)
- Requires 1/2" (12 mm) hole diameter to secure through the glass
- Center-to-Center hole spacing to protect against glass-to-metal contact
- Napa series includes washers and is available in 6" or 8" in various colors not all shown here including PC, BN, OB, PB and MBL
- Sonoma Series does not include washers and is available in 6" or 8" in various colors not all show here including PC, BN, OB, PB and MBL
- WBS Ladder available in 12" only in PC, BN, OB
- Square back-to-back handle available in 8" only in PC, BN, OB



8" Napa Back-to-Back
Pull Handle
PH-NA-8BTB



6" Napa Back-to-Back
Pull Handle
PH-NA-6BTB



12" WBS Ladder Back-to-Back
Pull Handle
8" (CTC)/HL-8BTB



8" Sonoma Back-to-Back
Pull Handle
PH-SO-8BTB



6" Sonoma Back-to-Back
Pull Handle
PH-SO-6BTB



8" Square Back-to-Back
Pull Handle
SQ-8X8 BTB

GLASS SUPPORT BARS

- Glass support bars are 3/4" (19 mm) in diameter
- Made of brass tubing with solid brass fittings
- For glass thickness 3/8" (9.5 mm) to 1/2" (12 mm)



39" Sunset Glass-to-Wall Support Bar
Also available in 51" & all colors
PC, BN, OB, AB, PN, SN, PB
[SB-SU-39GTW](#)



39" Sunset Glass-to-Glass Support Bar
Also available in 51" & all colors
PC, BN, OB, AB, PN, SN, PB
[SB-SU-39GTC](#)



72" Sunset Thru-Glass-To-Wall Support Bar
Available in PC and BN
[SB-SU-72TGTW](#)

TOWEL BARS

- Towel bars are 3/4" (19 mm) in diameter
- Use for glass thickness of 1/4" (6 mm) to 1/2" (12 mm)
- Requires 1/2" (12 mm) hole diameter to secure through the glass
- Presidio requires 7/8" (22.23 mm) hole diameter to secure through the glass
- Includes plastic washer to protect against glass-to-metal contact

SINGLE MOUNT TOWEL BARS

- Presidio Series includes finger pull end caps for easier inside pull
- Presidio only available in 4 colors (PB, PC, BN, and OB)



18" Sonoma Single Mount Towel Bar
Polished Nickel
TB-SO-18SM



18" Napa Single Mount Towel Bar
Polished Chrome
TB-NA-18SM



24" Square Single Mount Towel Bar
Brushed Nickel
TBS-24SM



18" Presidio Single Mount Towel Bar
Polished Chrome
TB-PR-18SM

AVAILABLE TOWEL BAR SIZE (SONOMA SINGLE MOUNT) (NAPA SINGLE MOUNT)	CENTER-TO-CENTER (TOWEL BAR)
12"	12" (305 mm)
14"	14" (356 mm)
16"	16" (406 mm)
18"	18" (457 mm)
20"	20" (508 mm)
22"	22" (559 mm)
24"	24" (610 mm)
26"	26" (660 mm)
27"	27" (686 mm)
28"	28" (711 mm)
30"	30" (762 mm)

AVAILABLE TOWEL BAR SIZE (SQUARE SINGLE MOUNT)	CENTER-TO-CENTER (TOWEL BAR)
24"	24" (610 mm)

AVAILABLE TOWEL BAR SIZE (PRESIDIO SINGLE MOUNT)	CENTER-TO-CENTER (TOWEL BAR)
18"	18" (457 mm)
22"	22" (559 mm)
24"	24" (610 mm)
27"	27" (686 mm)
30"	30" (762 mm)

BACK-TO-BACK TOWEL BARS

- Requires 1/2" (12 mm) hole diameter to secure through the glass Sonoma series towel bars do not include decorative metal washers
- Available in all colors not shown here including (PC, BN, OB, AB, PN, SN, PB)



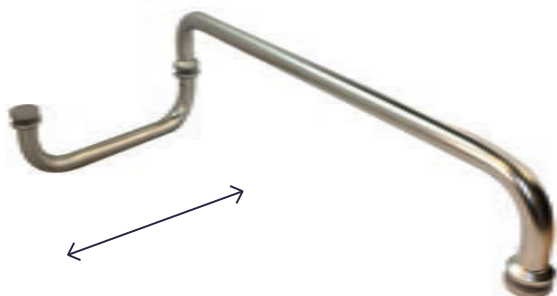
18" Sonoma Back-to-Back Towel Bar
Polished Nickel
TB-SO-18BTB



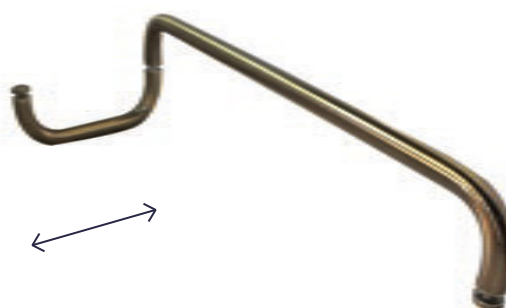
18" Napa Back-to-Back Towel Bar
Polished Chrome
TB-NA-18BTB

COMBINATION PULL HANDLES WITH TOWEL BAR

- Requires 1/2" (12 mm) hole diameter to secure through the glass
- Center-to-center hole spacing is 6" (152 mm) or 8" (203 mm) for handles
- Each set consists of one pull handle (6" or 8") and one towel bar
- Sonoma Series pull handles and towel bars do not include decorative metal washers
- Available in all colors not shown here including (PC, BN, OB, AB, PN, SN, PB)



8" / 18" Napa Combination Pull Handles with Towel Bar
Polished Nickel
PH-NA-818COM



6" / 18" Sonoma Combination Pull Handles w/ Towel Bar
Polished Brass
PH-SO-618COM

AVAILABLE TOWEL BAR SIZE (FOR EITHER 6" OR 8" HANDLE)	CENTER-TO-CENTER (TOWEL BAR)
12"	12" (305 mm)
14"	14" (356 mm)
16"	16" (406 mm)
18"	18" (457 mm)
20"	20" (508 mm)
22"	22" (559 mm)
24"	24" (610 mm)
26"	26" (660 mm)
27"	27" (686 mm)
28"	28" (711 mm)
30"	30" (762 mm)

AVAILABLE TOWEL BAR SIZE (SONOMA BACK-TO-BACK) (NAPA BACK-TO-BACK)	CENTER-TO-CENTER (TOWEL BAR)
12"	12" (305 mm)
18"	18" (457 mm)
20"	20" (508 mm)
22"	22" (559 mm)
24"	24" (610 mm)

ROBE HOOKS

- Requires 1/2" (12 mm) hole diameter to secure through the glass
- For glass thickness 5/16" (8 mm) to 1/2" (12 mm)
- Includes plastic washers to protect against glass-to-metal contact
- Can mount using hanger bolt (included)
- Available in all colors not shown here including (PC, BN, OB, AB, PN, SN, PB)



Image by: VDM Glass in Sacramento, CA



Ashbury Single Mount Robe Hook
Antique Brass
RH-AB-SM

WASHER KITS

- Handle washer kits are made of stainless steel
- For 3/4" (19 mm) diameter pull handles
- Back-to-back handle and towel bar washer kit contains four metal washers and four plastic washers
- Handle/Towel Bar Combo washer kits are made of brass
- Washers and end caps measure 1 1/4" (31.8 mm) in diameter
- Kit contains two metal washers, two end caps (with threaded rods), and four plastic washers



Handle Washer Kit
WC-BTB



Handle/Towel Bar Combo Washer Kit
WC-COM

SLEEVES

- Sleeves made of solid brass
- For glass thickness 5/16" (8 mm) to 1/2" (12 mm)
- Includes gaskets
- Does not require notches or holes to be mounted
- A nylon tipped screw is tightened to secure the glass
- Adjustable Sleeve only available in five colors (PB, PC, BN, OB, and PN)
- 1/2" 135 and 90 degree sleeves are available in six colors (PB, PC, BN, OB, AB, and PN)



3/8" & 1/2" Adjustable Sleeve
Polished Chrome
SL-ADJ



3/8" & 1/2" 135 Degree Sleeve
Polished Brass
SL-12-135



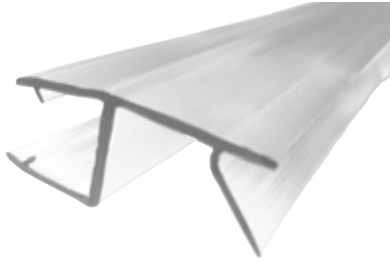
3/8" 90 Degree Sleeve
Polished Chrome
SL-38-90



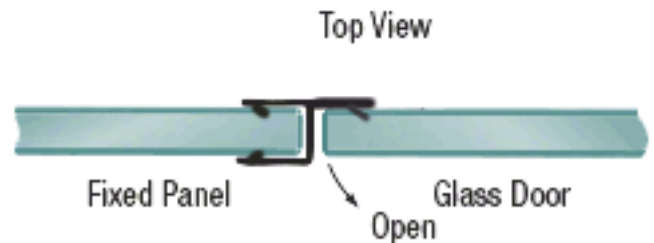
1/2" 90 Degree Sleeve
Polished Brass
SL-12-90

POLYCARBONATE STOPS

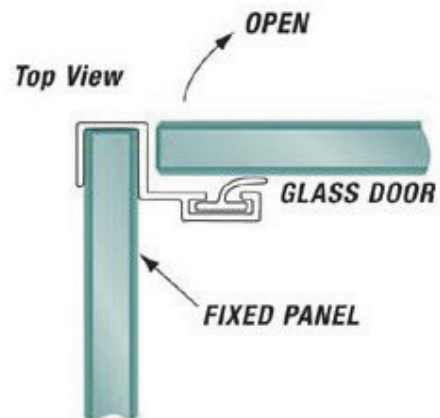
- Clear polycarbonate seals between the door and fixed panel on a 180 in-line, 90 corner, or 135 neo-angle application
- Attach to the fixed panel on the strike side
- Contains vinyl insert where door stops
- Use 5 degree positive closure hinges to maintain constant pressure against the jamb
- Stock length is 98" (2.49 m)



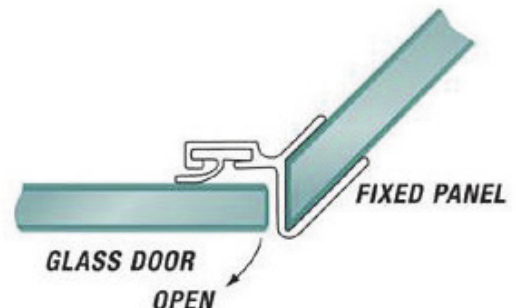
3/8" 180 Strike Stop 98"
PC-ST-38-180SS



3/8" 90 Strike Stop 98"
PC-ST-38-90SS



3/8" 135 Strike Stop 98"
PC-ST-38-135SS



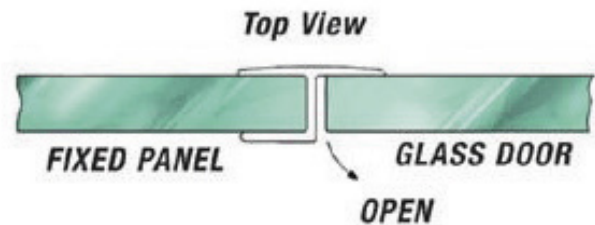
POLYCARBONATE STOPS

180 RIGID STOP

- Clear polycarbonate seals between the door and fixed panel on a 180 in-line application
- Use 3/8" 180 Rigid Stop for 3/8" Glass
- Attach to the fixed panel on the strike side
- Use 5 degree positive closure hinges to maintain constant pressure against the jamb
- Stock length is 98" (2.49 m)



180 Rigid Stop 98"
PC-ST-38-180R

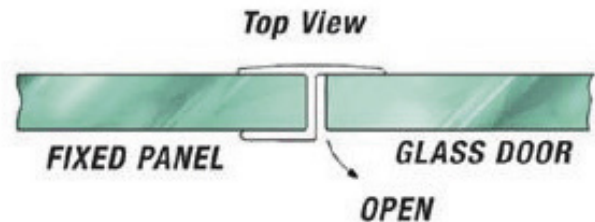


180 SOFT STOP

- Clear polycarbonate seals between the door and fixed panel on a 180 in-line application
- Attach to the fixed panel on the strike side
- Extended single leg is made of soft vinyl
- Use 5 degree positive closure hinges to maintain constant pressure against the jamb
- Stock length is 98" (2.49 m)

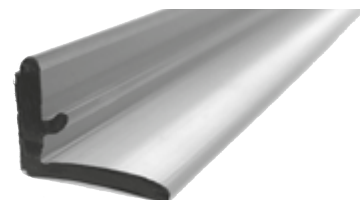


3/8" 180 Soft Stop 98"
PC-ST-38-180S



6000 SERIES L-JAMB W/ ADHESIVE

- L-Jamb Polycarbonate Stop is designed for the 6000 Series and included as a component part
- Features adhesive siding to secure to the wall
- Provides a cushion for the sliding panel

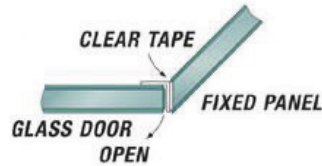
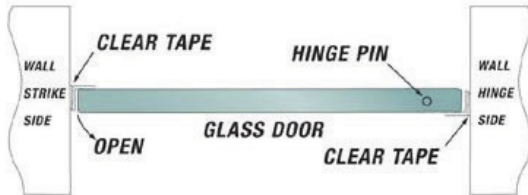


L-Jamb Polycarbonate Stop
046268

POLYCARBONATE SEALS

1/2" X 1/2" L-SEAL

- Clear polycarbonate seals between the door and fixed panel on a 135 neo-angle application
- Attach to the door on the hinge side
- Contains vinyl insert where it lies against the fixed panel
- Stock length is 98" (2.49 m)
- Use very high bond tape (VHB)



1/2" x 1/2" Square Stop 98"
PC-ST-12X12-SS

BULB SEAL

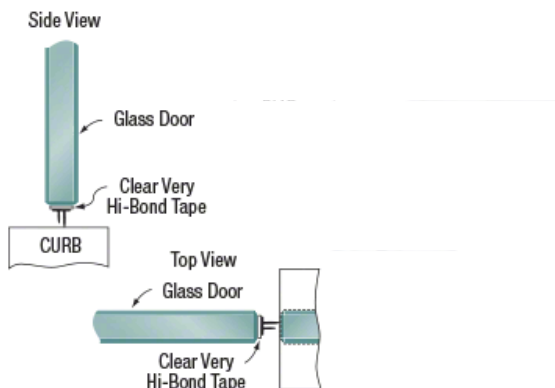
- Clear dual durometer assists in keeping water in the shower by attaching to a door
- Attach between the door and the wall on the hinge side or on the strike side
- Secure seal with clear very high bond tape
- Stock length is 98" (2.49 m)
- Use very high bond tape (VHB)



Bulb Seal 98"
PC-SL-B

DOUBLE FIN SEAL

- Clear dual durometer assists in keeping water in the shower by attaching to a door (either horizontal or vertical sides)
- Secure seal with clear very high bond tape
- Stock length is 98" (2.49 m)

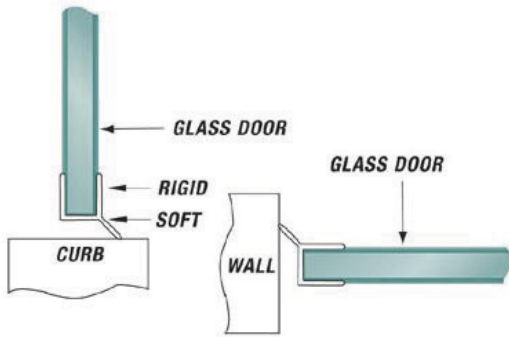


Double Fin Seal 98"
PC-SL-DF

POLYCARBONATE WIPES

ANGLED SWEEP WIPES

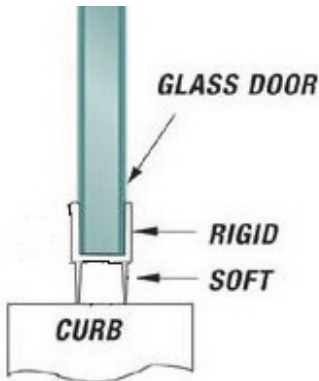
- Clear dual durometer assists in keeping water in the shower by snapping onto the bottom of the door
- May also be used between the door and the wall on the hinge side
- Stock length is 98" (2.49 m)



Angled Sweep Wipe 98"
PC-WP-38-AS

DOUBLE SWEEP WIPES

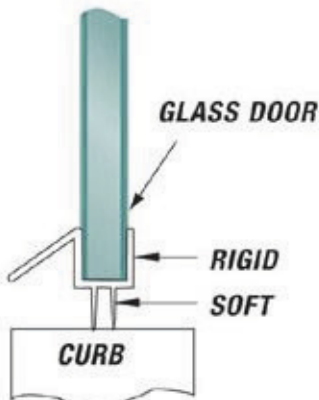
- Clear dual durometer assists in keeping water in the shower by snapping onto the bottom of the door
- Stock length is 98" (2.49 m)



3/8" Double Sweep Wipe 98"
PC-WP-38-DS

DOUBLE SWEEP DRIP WIPES

- Clear dual durometer assists in keeping water in the shower by snapping onto the bottom of the door
- Stock length is 98" (2.49 m)
- Available in 3/8" and 1/2"



Double Sweep Drip Wipe 98"
PC-WP-12-DSD

PROFESSIONAL GRADE VERY HIGH BOND TAPE

- Clear two-way adhesive tape
- Available in two sizes:
 - 1/4" (6 mm) x .020" (.5 mm) x 20' (6 m)
 - 1/4" (6 mm) x .040" (1 mm) x 20' (6 m)



1/4" x .020" x 20' Very High Bond Tape (VHB)
TP-020



1/4" x .040" x 20' Very High Bond Tape (VHB)
TP-040

WBS GLASS CLEANER & MICROFIBER CLOTH

- Recommended for proper cleaning

WBS Glass Cleaner
SSOPL



Microfiber Cloth
MF-C

WBS SCREWS

- All WBS screws are custom designed specifically for our shower doors & available in a variety of finishes
- Combo Drive Screws are unique to WBS
 - They either accepts phillips or square drive
 - Made of stainless steel and will not rust
- Wall mount plate screws are made of stainless steel
 - #10 x 2/12" square head



ALL WBS SCREWS ARE CUSTOM DESIGNED SPECIFICALLY
FOR OUR SHOWER DOORS

DRILL BITS

- Every TE/SE unit contains
 - #32 High Speed Steel Drill Bit
 - Apex Bit
 - Porcelain Bit
- Every Pivot Door unit contains
 - #32 High Speed Steel Drill Bit
 - Apex Bit
- Every Heavy unit contains
 - 2 Porcelain Drill Bits



#32 High Speed Steel
Drill Bit
DB-32-HSS



#1 & #2 3" Square Drive
Apex Bit
AB-12-SD3



7/32" & 1/4"
Porcelain Drill Bit
PB-732 / PB-14

WARDROBE DOORS

WBS WARDROBE DOORS FEATURES

Wardrobe & Bath Specialties Wardrobe Doors are made of the highest quality materials. Our innovative designs are both stylish and manufactured to glide with ease. We use the thickest aluminum extrusions available in the industry, precision Delrin® rollers, mohair interior tracks, and a variety of finish options within each series.

WARDROBE DOORS AT-A-GLANCE

SMOOTH & QUIET GLIDING

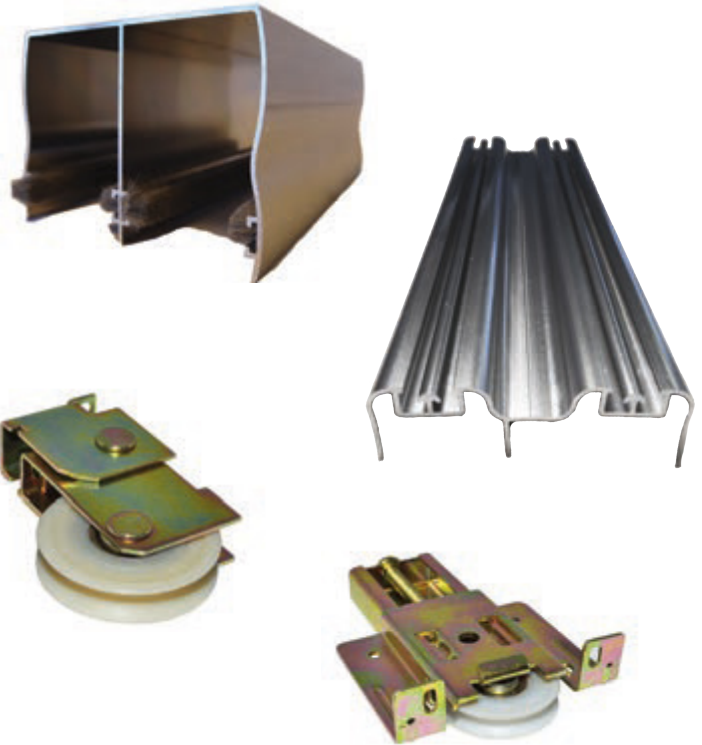
- Mohair Guide System
- Precision Rollers

DURABILITY

- Thickest Aluminum Extrusions
- Guide Rails inserted into the frame
- Double and Triple Tracks
- Delrin® Precision Ball-Bearing Rollers

STYLISH DESIGNS

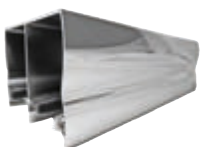
- Six Style Options
- Multiple Finishes
- Protected Edges
- Framed/Frameless Look
- Beveled/Non-Beveled
- Extensive List of Sizes



ADDITIONAL WARDROBE FINISHES



Mirrored Glass



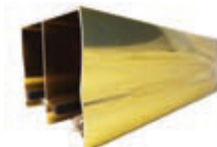
Polished Chrome



Oil Rubbed Bronze



Brushed Nickel



Polished Brass



Satin Gold



White

#100 SERIES ALUMINUM BI-PASS MIRROR WARDROBE DOORS



FEATURES & BENEFITS

- 5/32" thick and 1/8" thick mirror
- 1 3/8" thick frame stiles
- Stiles made using a hollow die for tighter tolerances & a cleaner look
- Interior top track mohair guide system
- CAT II vinyl back mirror
- Triple track available upon request
- Available in two or three panel units
- Height adjustments
 - 80 1/2" Units: Minimum Height = 80"
Maximum Height = 81 1/2"
 - 96" Units: Minimum Height = 95 1/8"
Maximum Height = 96 5/8"

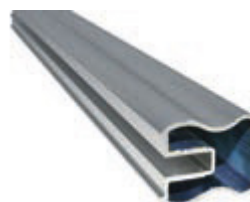
GLASS TEXTURES



Mirrored Glass

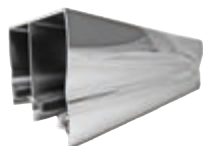


#100 Delrin® Precision Ball Bearing Roller



#100 Series Stile

AVAILABLE COLORS



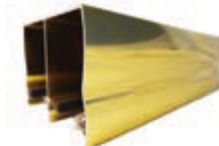
Polished Chrome



Oil Rubbed Bronze



Brushed Nickel



Polished Brass



Satin Gold



White

WIDTH & HEIGHT OPTIONS

Net Finished Opening				Net Finished Opening			
Width x Height		Satin Gold	Chrome	Width x Height		Satin Gold	Chrome
		White	Polished Brass			White	Polished Brass
2 Panel Units		List Price	List Price	3 Panel Units		List Price	List Price
48" x	80 1/2"	\$366	\$466	108" x	80 1/2"	\$799	\$1,005
60" x	80 1/2"	\$428	\$542	120" x	80 1/2"	\$955	\$1,089
72" x	80 1/2"	\$484	\$608	132" x	80 1/2"	\$1,032	\$1,168
84" x	80 1/2"	\$570	\$688	144" x	80 1/2"	\$1,054	\$1,245
96" x	80 1/2"	\$630	\$760	108" x	96"	\$913	\$1,144
48" x	96"	\$426	\$528	120" x	96"	\$1,087	\$1,232
60" x	96"	\$490	\$612	132" x	96"	\$1,177	\$1,320
72" x	96"	\$548	\$692	144" x	96"	\$1,188	\$1,412
84" x	96"	\$652	\$778				
96" x	96"	\$720	\$858				

Mirror thickness ranges from 1/8" thick for panels 36" wide and under, and 5/32" thick for panels over 36" wide.

For custom units use next largest size and add \$15.00 net per panel.

WARDROBE DOORS

#200 SERIES ALUMINUM BI-PASS MIRROR WARDROBE DOORS



FEATURES & BENEFITS

- 5/32" thick and 1/8" thick mirror
- 3/4" thick frame stiles
- Interior top track mohair guide system
- Triple track available upon request
- Available in two or three panel units
- CAT II vinyl back mirror
- Height adjustments
 - 80 1/2" Units: Minimum Height = 80"
Maximum Height = 81 1/2"
 - 96" Units: Minimum Height = 95 1/8"
Maximum Height = 96 5/8"

GLASS TEXTURES



Mirrored Glass

AVAILABLE COLORS



Brushed Nickel



White



#200 Delrin Precision Ball Bearing Roller



#200 Series Stile

WIDTH & HEIGHT OPTIONS

<u>Net Finished Opening</u>			<u>Net Finished Opening</u>		
<u>Width x Height</u>	<u>White</u>	<u>Brushed Nickel</u>	<u>Width x Height</u>	<u>White</u>	<u>Brushed Nickel</u>
<u>2 Panel Units</u>	<u>List Price</u>	<u>List Price</u>	<u>3 Panel Units</u>	<u>List Price</u>	<u>List Price</u>
48" x 80 1/2"	\$366	\$662	108" x 80 1/2"	\$799	\$1,428
60" x 80 1/2"	\$428	\$770	120" x 80 1/2"	\$955	\$1,546
72" x 80 1/2"	\$484	\$863	132" x 80 1/2"	\$1,032	\$1,659
84" x 80 1/2"	\$570	\$977	144" x 80 1/2"	\$1,054	\$1,768
96" x 80 1/2"	\$630	\$1,079	108" x 96"	\$913	\$1,624
48" x 96"	\$426	\$750	120" x 96"	\$1,087	\$1,749
60" x 96"	\$490	\$869	132" x 96"	\$1,177	\$1,874
72" x 96"	\$548	\$983	144" x 96"	\$1,188	\$2,006
84" x 96"	\$652	\$1,105			
96" x 96"	\$720	\$1,218			

Mirror thickness ranges from 1/8" thick for panels 36" wide and under, and 5/32" thick for panels over 36" wide.

For custom units use next largest size and add \$15.00 net per panel.

#400 SERIES ALUMINUM BI-PASS EURO STYLE MIRROR WARDROBE DOORS



FEATURES & BENEFITS

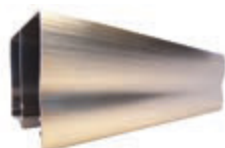
- This unit is built to size with no custom charge
- 5/32" thick mirror
- 1 3/8" thick frame stiles
- Stiles made using a hollow die for tighter tolerances & a cleaner look
- Interior top track mohair guide system and tandem rollers
- Triple track available upon request

GLASS TEXTURES



Mirrored Glass

AVAILABLE COLORS



Brushed Nickel



White



#400 Delrin Precision Ball Bearing Roller



#400 Series Stile

WIDTH & HEIGHT OPTIONS

Net Finished Opening

Width x Height			White	Brushed Nickel
2 Panel Units			List Price	List Price
48"	x	80 1/2"	\$766	\$1,287
60"	x	80 1/2"	\$876	\$1,460
72"	x	80 1/2"	\$986	\$1,633
84"	x	80 1/2"	\$1,096	\$1,809
96"	x	80 1/2"	\$1,206	\$1,982
48"	x	96"	\$858	\$1,440
60"	x	96"	\$980	\$1,630
72"	x	96"	\$1,154	\$1,897
84"	x	96"	\$1,222	\$2,011
96"	x	96"	\$1,428	\$2,320

Net Finished Opening

Width x Height			White	Brushed Nickel
3 Panel Units			List Price	List Price
108"	x	80 1/2"	\$1,480	\$2,451
120"	x	80 1/2"	\$1,620	\$2,667
132"	x	80 1/2"	\$1,760	\$2,885
144"	x	80 1/2"	\$1,810	\$2,973
108"	x	96"	\$1,732	\$2,846
120"	x	96"	\$1,808	\$2,973
132"	x	96"	\$2,090	\$3,391
144"	x	96"	\$2,140	\$3,482

Unit must be ordered with 4 measurements: Height = Measure opening at the left and right facing unit.

Width = Measure opening at the top and bottom facing unit.

WARDROBE DOORS

#500 SERIES FINELINE BI-FOLD MIRROR WARDROBE DOORS

FEATURES & BENEFITS

- This unit is built to size with no custom charge and has a 3/8" wrap around frame and 1/8" mirror
- All aluminum extrusions
- Available in either two panel or four panel configurations
- Also available with no bottom track utilizing a jamb bracket



GLASS TEXTURES



Mirrored Glass

AVAILABLE COLORS



Brushed Nickel



White



Jamb Bracket



#500 Series Stile

WIDTH & HEIGHT OPTIONS

Net Finished Opening

<u>Width x Height</u>		<u>White</u>	<u>Brushed Nickel</u>
<u>2 Panel Units</u>		<u>List Price</u>	<u>List Price</u>
24" x 80 1/2"		\$442	\$747
30" x 80 1/2"		\$475	\$800
36" x 80 1/2"		\$513	\$856
24" x 96"		\$484	\$828
30" x 96"		\$524	\$887
36" x 96"		\$561	\$950

Net Finished Opening

<u>Width x Height</u>		<u>White</u>	<u>Brushed Nickel</u>
<u>4 Panel Units</u>		<u>List Price</u>	<u>List Price</u>
48" x 80 1/2"		\$1,480	\$2,451
60" x 80 1/2"		\$1,620	\$2,667
72" x 80 1/2"		\$1,760	\$2,885
48" x 96"		\$1,810	\$2,973
60" x 96"		\$1,732	\$2,846
72" x 96"		\$1,808	\$2,973

Unit must be ordered with 4 measurements: Height = Measure opening at the left and right facing unit.
Width = Measure opening at the top and bottom facing unit.

#800 SERIES FRAMELESS BEVELED BI-PASS MIRROR WARDROBE DOORS



FEATURES & BENEFITS

- 5/32" thick mirror
- Interior top track mohair guide system
- Frameless appearance
- Protective edge on vertical sides
- 3/4" bevel on vertical sides
- Triple track available upon request
- Available in two or three panel units
- Constructed with aluminum extrusions unique to WBS
- For custom units use next largest size and add \$15.00 net per panel
- This unit is not available with a custom width, only a custom height
- Height adjustments
 - 80 1/2" Units: Minimum Height = 80"
Maximum Height = 81 1/2"
 - 96" Units: Minimum Height = 95 1/8"
Maximum Height = 96 5/8"

WIDTH & HEIGHT OPTIONS

Net Finished Opening

Width x Height			<u>Satin Gold</u> <u>White</u>	<u>Chrome</u> <u>Polished Brass</u>	<u>OB/BN</u>
2 Panel Units			List Price	List Price	List Price
48"	x	80 1/2"	\$540	\$625	\$850
52"	x	80 1/2"	\$610	\$695	\$945
56"	x	80 1/2"	\$610	\$695	\$945
60"	x	80 1/2"	\$610	\$695	\$945
64"	x	80 1/2"	\$685	\$765	\$1,040
68"	x	80 1/2"	\$685	\$765	\$1,040
72"	x	80 1/2"	\$685	\$765	\$1,040
76"	x	80 1/2"	\$750	\$835	\$1,136
80"	x	80 1/2"	\$750	\$835	\$1,136
84"	x	80 1/2"	\$750	\$835	\$1,136
88"	x	80 1/2"	\$800	\$905	\$1,231
92"	x	80 1/2"	\$800	\$905	\$1,231
96"	x	80 1/2"	\$800	\$905	\$1,231

Net Finished Opening

Width x Height			<u>Satin Gold</u> <u>White</u>	<u>Chrome</u> <u>Polished Brass</u>	<u>OB/BN</u>
2 Panel Units			List Price	List Price	List Price
48"	x	96"	\$610	\$720	\$979
52"	x	96"	\$670	\$800	\$1,088
56"	x	96"	\$670	\$800	\$1,088
60"	x	96"	\$670	\$800	\$1,088
64"	x	96"	\$730	\$880	\$1,197
68"	x	96"	\$730	\$880	\$1,197
72"	x	96"	\$730	\$880	\$1,197
76"	x	96"	\$830	\$965	\$1,312
80"	x	96"	\$830	\$965	\$1,312
84"	x	96"	\$830	\$965	\$1,312
88"	x	96"	\$900	\$1,040	\$1,414
92"	x	96"	\$900	\$1,040	\$1,414
96"	x	96"	\$900	\$1,040	\$1,414

#800 SERIES FRAMELESS BEVELED BI-PASS MIRROR WARDROBE DOORS CONTINUED



#800 Delrin Precision Ball Bearing Roller



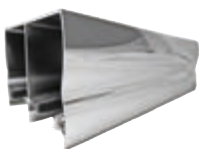
#800 Series Stile

GLASS TEXTURES



Mirrored Glass

AVAILABLE COLORS



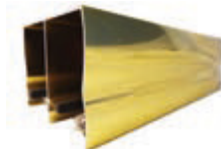
Polished Chrome



Oil Rubbed Bronze



Brushed Nickel



Polished Brass



Satin Gold



White

Net Finished Opening

<u>Width x Height</u>	<u>Satin Gold</u> <u>White</u>	<u>Chrome</u> <u>Polished Brass</u>	<u>OB/BN</u>
<u>3 Panel Units</u>	<u>List Price</u>	<u>List Price</u>	<u>List Price</u>
102" x 80 1/2"	\$1,122	\$1,282	\$1,742
108" x 80 1/2"	\$1,122	\$1,282	\$1,742
114" x 80 1/2"	\$1,238	\$1,375	\$1,870
120" x 80 1/2"	\$1,238	\$1,375	\$1,870
126" x 80 1/2"	\$1,320	\$1,469	\$1,998
132" x 80 1/2"	\$1,320	\$1,469	\$1,998
138" x 80 1/2"	\$1,430	\$1,513	\$2,057
144" x 80 1/2"	\$1,430	\$1,513	\$2,057

Net Finished Opening

<u>Width x Height</u>	<u>Satin Gold</u> <u>White</u>	<u>Chrome</u> <u>Polished Brass</u>	<u>OB/BN</u>
<u>3 Panel Units</u>	<u>List Price</u>	<u>List Price</u>	<u>List Price</u>
102" x 96"	\$1,199	\$1,496	\$2,035
108" x 96"	\$1,199	\$1,496	\$2,035
114" x 96"	\$1,353	\$1,584	\$2,154
120" x 96"	\$1,353	\$1,584	\$2,154
126" x 96"	\$1,447	\$1,672	\$2,274
132" x 96"	\$1,447	\$1,672	\$2,274
138" x 96"	\$1,502	\$1,727	\$2,349
144" x 96"	\$1,502	\$1,727	\$2,349

For custom units use next largest size and add \$15.00 net per panel. This unit is not available with a custom width, only a custom height.

PRODUCT INDEX BY CATEGORY

ABOUT US

• ABOUT US	2, 3
• QUALITY CONTROL	4, 5
• GLASS CARE & MAINTENANCE	6, 7
• CERTIFIED SIKA DISTRIBUTOR & PRODUCTS	8, 9
• POLICY & TERMS	10, 11
• GLASS TEXTURES & FINISHES	12, 13

TUB & SHOWER ENCLOSURES

• TUB & SHOWER ENCLOSURES FEATURES	14, 15
• TE 1000 FRAMELESS TUB ENCLOSURES	16
• TE 1000 FRAMELESS TUB ENCLOSURES WITH PANELS	17
• SE 1000 FRAMELESS SHOWER ENCLOSURES	18
• SE 1000 FRAMELESS SHOWER ENCLOSURES WITH PANELS	19
• TE 1100 LIGHT FRAMED TUB ENCLOSURE	20
• SE 1100 LIGHT FRAMED SHOWER ENCLOSURE	21
• TE 1200 LIGHT FRAMED TUB ENCLOSURE	22
• SE 1200 LIGHT FRAMED SHOWER ENCLOSURE	23
• TE 2000 FRAMELESS EURO TUB ENCLOSURES	24
• TE 2000 FRAMELESS EURO TUB ENCLOSURES WITH PANELS	25
• SE 2000 FRAMELESS EURO SHOWER ENCLOSURES	26
• SE 2000 FRAMELESS EURO SHOWER ENCLOSURES WITH PANELS	27
• TE 3000 FRAMED TUB ENCLOSURES	28
• TE 3000 FRAMED TUB ENCLOSURES WITH PANELS	29
• SE 3000 FRAMED SHOWER ENCLOSURES	30
• SE 3000 FRAMED SHOWER ENCLOSURES WITH PANELS	31
• TE 4000 FRAMELESS LIGHT EURO TUB ENCLOSURES	32
• TE 4000 FRAMELESS LIGHT EURO TUB ENCLOSURES WITH PANELS	33
• SE 4000 FRAMELESS LIGHT EURO SHOWER ENCLOSURES	34
• SE 4000 FRAMELESS LIGHT EURO SHOWER ENCLOSURES WITH PANELS	35
• TE 5000 FRAMELESS HEAVY TUB ENCLOSURES	36
• TE 5000 FRAMELESS HEAVY TUB ENCLOSURES WITH PANELS	37
• SE 5000 FRAMELESS HEAVY SHOWER ENCLOSURES	38
• SE 5000 FRAMELESS HEAVY SHOWER ENCLOSURES WITH PANELS	39

PIVOT & SWING DOOR SHOWERS

• P 1500 CONTINUOUS HINGE FRAMELESS SWING DOOR ONLY	40
• P 2000 EURO STYLE FRAMELESS SWING DOOR ONLY	41
• P 2500 EURO STYLE FRAMELESS SWING DOOR ONLY	42
• P 3000 CONTINUOUS HINGE FRAMED SWING DOOR ONLY	43
• PIVOT & SWING DOOR COMPONENTS - P 45	44
• PIVOT & SWING DOOR COMPONENTS - P 90	45
• PIVOT & SWING DOOR COMPONENTS - P 90 I	46
• PIVOT & SWING DOOR COMPONENTS - P 135	47
• PIVOT & SWING DOOR COMPONENTS - P 180	48, 49

PRODUCT INDEX BY CATEGORY CONTINUED

HEAVY GLASS UNITS & HARDWARE

• HEAVY GLASS FEATURES	50, 51
• HEAVY GLASS CUSTOM CONFIGURATIONS	52, 53
• 6000 SERIES, HEAVY GLASS SLIDING DOOR	54, 55
• 7000 SERIES, HEAVY GLASS SLIDING DOOR	56, 57
• STANDARD HINGES	58, 59
• HEAVY HINGES	60 - 63
• WBS EZ HINGE, BAYVIEW PIVOT HINGE	64
• HEADER KIT, BRACKETS	65
• U-CHANNELS, J-MOLDS, L-BAR	66
• VINYL, SETTING BLOCKS	67
• NOTCHED CLIPS	68, 69
• TRANSOM CLIPS	70
• NOTCHLESS COMPRESSION CLIPS	71
• SINGLE MOUNT KNOBS, ADAPTER KITS	72
• SINGLE MOUNT KNOBS, BACK-TO-BACK KNOBS	73
• BACK-TO-BACK PULL HANDLES	74
• GLASS SUPPORT BARS	75
• SINGLE MOUNT TOWEL BARS	76
• BACK-TO-BACK TOWEL BARS, COMBINATION PULL HANDLES WITH TOWEL BAR	77
• ROBE HOOKS, WASHER KITS	78
• SLEEVES	79
• POLYCARBONATES	80 - 83
• STOPS	80, 81
• SEALS	82
• WIPES	83
• MISCELLANEOUS	84, 85
• VERY HIGH BOND TAPE (VHB)	84
• WBS GLASS CLEANER, MICROFIBER CLOTH	84
• SCREWS, DRILL BITS	85

WARDROBE DOORS

• WARDROBE DOORS FEATURES	86
• # 100 SERIES ALUMINUM BI-PASS MIRROR WARDROBE DOORS	87
• # 200 SERIES ALUMINUM BI-PASS MIRROR WARDROBE DOORS	88
• # 400 SERIES ALUMINUM BI-PASS EURO STYLE MIRROR WARDROBE DOORS	89
• # 500 SERIES FINELINE BI-FOLD MIRROR WARDROBE DOORS	90
• # 800 FRAMELESS BEVELED BI-PASS MIRROR WARDROBE DOORS	91, 92



A TO Z INDEX

BRACKETS	65	J-MOLDS: 3/8" J-MOLD, 5/8" J-MOLD	66
• ADJUSTABLE HEADER	65	KNOBES	72, 73
• 90 CORNER	65	• BACK-TO-BACK KNOBS	73
• 135 CORNER	65	• CALISTOGA BACK-TO-BACK KNOBS	73
• WALL MOUNT	65	• SARATOGA BACK-TO-BACK KNOB	73
CLIPS	68 - 71	• SILVERADO BACK-TO-BACK KNOB	73
• NOTCHED CLIPS	68, 69	• PETALUMA BACK-TO-BACK KNOB	73
• CREEKSIDE 90, 135, 180 & WALL MOUNT	68	• SINGLE MOUNT KNOBS	72, 73
• SEAHAVEN 90, 135, 180 & WALL MOUNT	69	• CALISTOGA SINGLE MOUNT KNOB	73
• NOTCHLESS CLIPS (COMPRESSION CLIPS)	71	• CARMEL SINGLE MOUNT KNOB	73
• BEVELED & SQUARED EDGE	71	• PETALUMA SINGLE MOUNT KNOB	73
• TRANSOM CLIPS	70	• PRESIDIO SINGLE MOUNT KNOBS	72
• LAKEPORT 180, WALL MOUNT	70	• PRESIDIO SINGLE MOUNT ADAPTER KITS	72
• SHORELINE 180, WALL MOUNT	70	• SARATOGA SINGLE MOUNT KNOB	73
DRILL BITS	85	• SILVERADO SINGLE MOUNT KNOB	73
GLASS SUPPPORT BARS	75	L-BAR	66
• SUNSET GLASS-TO-GLASS SUPPORT BAR	75	MICROFIBER CLOTH	84
• SUNSET GLASS-TO-WALL SUPPORT BAR	75	PIVOT DOORS & COMPONENTS	40 - 49
• SUNSET THRU-GLASS-TO-WALL SUPPORT BAR	75	• PIVOT 1500 CONTINUOUS HINGE FRAMELESS SWING DOORS	40
• SUNSET 135 GLASS-TO-WALL SUPPORT BAR	75	• PIVOT 2000 EURO STYLE FRAMELESS SWING DOORS	41
HANDLES	74	• PIVOT 2500 EURO STYLE FRAMELESS SWING DOORS	42
• BACK-TO-BACK PULL HANDLES	74	• PIVOT 3000 CONTINUOUS HINGE FRAMED SWING DOORS	43
• NAPA BACK-TO-BACK PULL HANDLES (6" & 8")	74	• PIVOT & SWING DOOR COMPONENTS - P 45	44
• SONOMA BACK-TO-BACK PULL HANDLES (6" & 8")	74	• PIVOT & SWING DOOR COMPONENTS - P 90	45
• SQUARE BACK-TO-BACK PULL HANDLES (8")	74	• PIVOT & SWING DOOR COMPONENTS - P 90 I	46
• WBS LADDER BACK-TO-BACK PULL HANDLES (6" & 8")	74	• PIVOT & SWING DOOR COMPONENTS - P 135	47
• COMBINATION PULL HANDLES WITH TOWEL BAR	77	• PIVOT & SWING DOOR COMPONENTS - P 180	48, 49
• NAPA COMBINATION PULL HANDLES WITH TOWEL BAR	77	PIVOT HINGES	64
• SONOMA COMBINATION PULL HANDLES W/ TOWEL BAR	77	• BAYVIEW PIVOT HINGE	64
HEADER KITS	65	• WBS EZ HINGE	64
• EZ HEADER KIT WITH INSERT	65	POLYCARBONATES	80 - 83
HEAVY GLASS UNITS	50 - 57	• POLYCARBONATE SEALS	82
• HEAVY GLASS FEATURES	50, 51	• POLYCARBONATE STOPS	80, 81
• HEAVY GLASS CONFIGURATIONS	52, 53	• POLYCARBONATE WIPES	83
• 6000 SERIES	54, 55	TOWEL BARS	76, 77
• 7000 SERIES	56, 57	• BACK-TO-BACK TOWEL BARS	77
HINGES	58 - 63	• NAPA BACK-TO-BACK TOWEL BAR	77
• HEAVY HINGES	60 - 63	• SONOMA BACK-TO-BACK TOWEL BAR	77
• ATLANTIC HEAVY HINGE W/ ADJUSTABLE SHORT PLATE	63	• SINGLE MOUNT TOWEL BARS	76
• ATLANTIC HEAVY HINGE W/ FULL PLATE	61	• NAPA SINGLE MOUNT TOWEL BAR	76
• ATLANTIC HEAVY HINGE W/ OFFSET PLATE	61	• PRESIDIO SINGLE MOUNT TOWEL BAR	76
• ATLANTIC HEAVY HINGE W/ SHORT PLATE	61	• SONOMA SINGLE MOUNT TOWEL BAR	76
• ATLANTIC HEAVY 135 HINGE	63	• SQUARE SINGLE MOUNT TOWEL BAR	76
• ATLANTIC HEAVY 180 HINGE	63	• COMBINATION PULL HANDLES WITH TOWEL BAR	77
• PACIFIC HEAVY HINGE W/ ADJUSTABLE SHORT PLATE	63	• NAPA COMBINATION PULL HANDLE W/ TOWEL BAR	77
• PACIFIC HEAVY HINGE W/ FULL PLATE	61	• SONOMA COMBINATION PULL HANDLE W/ TOWEL BAR	77
• PACIFIC HEAVY HINGE W/ OFFSET PLATE	61	ROBE HOOKS	78
• PACIFIC HEAVY HINGE W/ SHORT PLATE	61	• ASHBURY SINGLE MOUNT ROBE HOOK	78
• PACIFIC HEAVY 135 HINGE	63	SCREWS	85
• PACIFIC HEAVY 180 HINGE	63	• COMBO DRIVE, WALL MOUNT, ALL OTHER WBS SCREWS	85
• STANDARD HINGES	58, 59	SETTING BLOCKS	67
• LAGUNA STANDARD HINGE W/ FULL PLATE	59		
• LAGUNA STANDARD HINGE W/ OFFSET PLATE	59		
• LAGUNA STANDARD HINGE W/ SHORT PLATE	59		
• MARINA STANDARD HINGE W/ FULL PLATE	59		
• MARINA STANDARD HINGE W/ OFFSET PLATE	59		
• MARINA STANDARD HINGE W/ SHORT PLATE	59		

A TO Z INDEX CONTINUED

SHOWER ENCLOSURES	19, 21, 22, 23, 26, 27, 30, 31, 34, 35, 38, 39
• SE 1000 FRAMELESS SHOWER ENCLOSURES	18
• SE 1000 FRAMELESS SHOWER ENCLOSURES WITH PANELS	19
• SE 1100 LIGHT FRAMED TUB ENCLOSURES	21
• SE 1200 LIGHT FRAMED TUB ENCLOSURES	23
• SE 2000 FRAMELESS EURO SHOWER ENCLOSURES	26
• SE 2000 FRAMELESS EURO SHOWER ENCLOSURES WITH PANELS	27
• SE 3000 FRAMED SHOWER ENCLOSURES	30
• SE 3000 FRAMED SHOWER ENCLOSURES WITH PANELS	31
• SE 4000 FRAMELESS LIGHT EURO SHOWER ENCLOSURES	34
• SE 4000 FRAMELESS LIGHT EURO SHOWER ENCLOSURES WITH PANELS	35
• SE 5000 FRAMELESS HEAVY SHOWER ENCLOSURES	38
• SE 5000 FRAMELESS HEAVY SHOWER ENCLOSURES WITH PANELS	39
SLEEVES: ADJUSTABLE, 90° 3/8" & 1/2", 135	79
TUB ENCLOSURES	16, 17, 18, 20, 24, 25, 28, 29, 32, 33, 36, 37
• TE 1000 FRAMELESS TUB ENCLOSURES	16
• TE 1000 FRAMELESS TUB ENCLOSURES WITH PANELS	17
• TE 1100 LIGHT FRAMED TUB ENCLOSURES	20
• TE 1200 LIGHT FRAMED TUB ENCLOSURES	22
• TE 2000 FRAMELESS EURO TUB ENCLOSURES	24
• TE 2000 FRAMELESS EURO TUB ENCLOSURES WITH PANELS	25
• TE 3000 FRAMED TUB ENCLOSURES	28
• TE 3000 FRAMED TUB ENCLOSURES WITH PANELS	29
• TE 4000 FRAMELESS LIGHT EURO TUB ENCLOSURES	32
• TE 4000 FRAMELESS LIGHT EURO TUB ENCLOSURES WITH PANELS	33
• TE 5000 FRAMELESS HEAVY TUB ENCLOSURES	36
• TE 5000 FRAMELESS HEAVY TUB ENCLOSURES WITH PANELS	37
• U-CHANNELS: 3/8" HIGH, 3/8" MEDIUM, 3/8" LOW	66
WARDROBE DOORS	86 - 93
• # 100 SERIES ALUMINUM BI-PASS MIRROR WARDROBE DOORS	87
• # 200 SERIES ALUMINUM BI-PASS MIRROR WARDROBE DOORS	88
• # 400 SERIES ALUMINUM BI-PASS EURO STYLE MIRROR WARDROBE DOORS	89
• # 500 SERIES FINELINE BI-FOLD MIRROR WARDROBE DOORS	90
• # 800 FRAMELESS BEVELED BI-PASS MIRROR WARDROBE DOORS	91, 92
WASHER KITS	78
• HANDLE WASHER KIT	78
• HANDLE / TOWEL BAR WASHER KIT	78
VERY HIGH BOND TAPE (VHB)	84
VINYL: 3/8" WBS EZ-HEADER GLAZING VINYL	67
WBS GLASS CLEANER	84

WITH A SPECIAL THANKS TO OUR CUSTOMERS

DON'S MOBILE GLASS
 MODESTO, CA
 DONSMOBILEGLASS.COM
 &
 VDM GLASS
 SACRAMENTO, CA
 (916) 371-6500

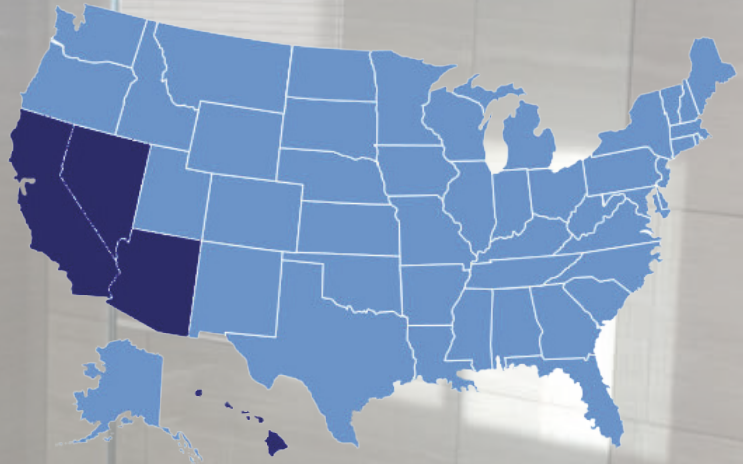
EST.

1983

SHOWER DOORS | WARDROBE DOORS | HEAVY GLASS | HARDWARE & ACCESSORIES



WARDROBE & BATH
SPECIALTIES



SERVING OUR CUSTOMERS IN
CALIFORNIA | NEVADA | ARIZONA | HAWAII

WBS12020



3800 FINCH ROAD | MODESTO, CA 95357

INFO@WARDROBEANDBATH.COM | P (800) 540-4085 | F (800) 725-0868

WARDROBE & BATH SPECIALTIES | WARDROBEANDBATH.COM



Our People Make the Difference!

